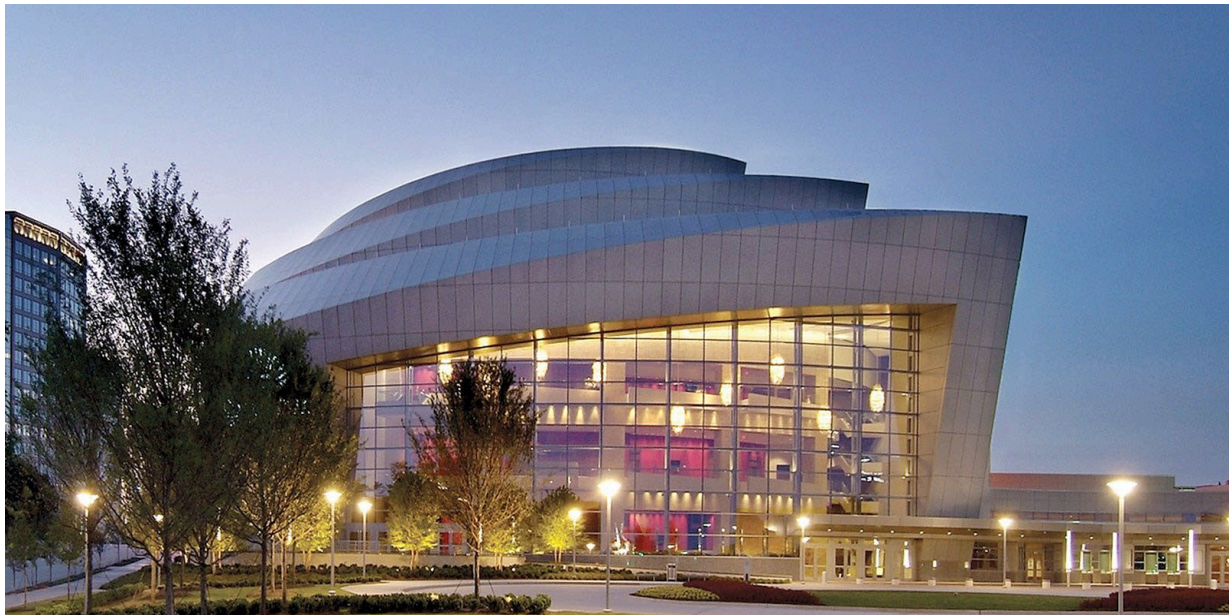




TECHNICAL PACKAGE

UPDATE 7/11/2024



770.916.2800
2800 Cobb Galleria Parkway
Atlanta, GA 30339
www.cobbenergycentre.com



COBB ENERGY

PERFORMING ARTS CENTRE

DOCK MAP

2800 Cobb Galleria Parkway
Atlanta, GA 30339

< I-75 Northbound

I-75 Southbound >

Marshalling Yard

Parking Lot

Access Road

Parking Deck

LOADING DOCK

THEATRE

Akers Mill Rd.

Cobb Galleria Pkwy





Staff

Director of Production

Brian Fiegelman

770.916.2915

bfiegelman@cobbenergycentre.com

Technical Coordinator

Gage Gilmore

770.916.2902

ggilmore@cobbenergycentre.com

Director Marketing/Programming

Tom Rowland

770.916.2804

trowland@cobbenergycentre.com

Front of House Manager

Angie McManus

770.916.2935

amcmanus@cobbenergycentre.com

Communications and Marketing Manager

Madisyn Willis

770.916.2923

mwillis@cobbenergycentre.com

Director of Food and Beverage

Bassem Maarouf

770.989.5091

Bmaarouf@cobbenergycentre.com

Production Manager

Dave Ragsdale

770.916.2902

dragsdale@cobbenergycentre.com

Contract/Settlement Manager

Amanda Wilkins

770.916.2827

awilkins@cobbenergycentre.com

Public Safety Manager

Jamie Wheeler

770.916.2910

jwheeler@cobbenergycentre.com

Box Office Manager

Russel Kennedy

770.916.2850

rkennedy@cobbenergycentre.com

Asst Box Office Manager

Brian Holman

770.916.2851

bholman@cobbenergycentre.com

Merchandise

Alison Jordan

Ali33jordan@gmail.com



Stage Dimensions

| | |
|-----------------------------------|----------------------|
| Proscenium Opening: | 50' wide X 31' high. |
| Stage Depth: | 55' |
| Stage Width: | 110' |
| Stage Height above Audience: | 40" |
| Stage Height above Orchestra Pit: | 8' |
| Apron Depth: | 2' |
| Apron Depth w/Gala Lift: | 11' |
| Orchestra Pit Depth (Broadway): | 15' |
| Stage floor to trap room floor: | 12' |
| Grid Height: | 82' |
| Mid Gallery Height: | 34' |
| Air Duct SL | 24' |
| Lower Loading Gallery Height: | 73' |
| Upper Loading Gallery Height: | 82' |

Loading Doors

| | |
|-------------------------|-----------------------------|
| Dock Doors: | 10'-6" high x 8' wide |
| Interior door to stage: | 19'-6" high x 11'-9" wide |
| Dock Height: | 47" (Standard Semi-trailer) |

Loading Dock

The dock can accommodate 4 trucks. Dock D is available for loading and unloading only. Trucks may not be parked in Dock D for the duration of an event. Each door has a dock leveler. The dock opens onto a Scenery Bay with access to Stage-Left. There is a sound isolation door between the Scenery Bay and Stage-Left.

Counterweight Fly System

| | |
|------------------------|----------------------|
| Number of Line-sets: | 95 (6" O.C.) |
| Line-set Construction: | 1.5" od Truss Batten |
| Batten Length: | 66' |
| Batten Out Trim: | 79' |
| Batten In Trim: | 4' |
| Arbor Capacity: | 2100 #'s |

Rigging

All Rigging MUST be approved by the production manager prior to arrival.
Rigging must be done by an approved vendor. (we use Rhino if client has no preference)



Soft Goods

House Curtain: Eggplant 36'h x 66' wide motorized guillotine; manual travel

Border: Black 15'h x 66'w Qty 6

Legs: Black 30'h x 14'w Qty 6 sets

Tabs: Black 30'h x 20'w Qty 4

Cyc: White 30'h x 64'w Qty 1

Scrim: White and black 30'h x 64'w Qty 1 Each

Full Stage Blackout: Black 30'h x 32'w Qty 1 Set

Variable Acoustics

The auditorium features acoustic curtains that can be stored or deployed over walls.

Stage Floor

The stage floor, in order of construction, includes a vapor barrier, sleepers on neoprene pads, 2 layers of ¾" inch plywood, and is topped with ¼" Masonite.

A black Marley dance floor is available.

Approx. Dimension 60' wide x 38' deep

Orchestra Pit

The Orchestra pit can be arranged as a Standard Broadway Pit accommodating approximately 14 people or a Full Pit accommodating approximately 60 people, comfortably. The Broadway Pit removes rows AAA and BBB from audience seating. The Full Pit removes rows AAA through EEE.

Orchestra Pit Accessories

100 – Musicians Chairs

100 – Music Stands with stand lights

1 – Wenger Conductor's Podium

Staging

Wenger Risers (carpeted) – All risers can be 8", 16", or 24" high.

8 – 4' x 8'

6 – 4' x 6'

4 – 4' x 4'

4 – 3' x 3'

Other Equipment

Plexi-glass Lectern

Wooden Lectern

1 Supertitle LED Screen



Projection

One Digital Projection 21k M-Vision Laser Projector and 11'x20' Front or Rear Projection Screen are available for an additional rental fee of \$1,500. The projector can be placed on stage or on a mezzanine platform 75' from stage.

Video and Audio Distribution

The Audio and video distribution for the building is done through Dante and NDI through Birdog 4k video switching controlled by Q-Sys Control. The system can take either HDMI or SDI through multiple patch points in the theatre.

Wardrobe

There are separate Wardrobe and Wig/Makeup rooms on the 2nd Level. Each is equipped with a sink. The wardrobe room has 2 washers and 3 dryers.

Piano

We have a Steinway D Full Grand Piano on site. If you would like to use it, please contact the Production Manager. The cost is \$800 plus the cost of tuning.

Labor

- A small in-house crew is available, please call for details.
- The staff of Cobb Energy Performing Arts Centre is available to aid on labor needs through Rhino Georgia. All other companies will be billed through the promoter.
- The Cobb Energy Performing Arts Centre has a small list of runners who may be contracted at \$250/day plus \$40 for gas. The Centre does not rent vehicles for any reason, any rental vehicle must be procured and insured by the presenter/promoter/producer.
- Vendor lists for Backline, Catering, Audio, Video, Lighting, and Labor can be provided by CEPAC production team.

Stage Lifts

- All lifts will be inspected prior to ensure.
 - No visible leakage of oil, hydraulic fluid, etc.
 - Battery if present in good condition.
 - Tires/wheels in good condition.
 - Platform in good condition
- The Lift will be lowered to its lowest limit prior to moving unless it is designed to move while the platform is elevated.
- A spotter will accompany the lift to advise of hazards on the ground.
- The lift will only be operated on level surfaces.
- Only CEPAC Staff will be allowed to operate any lifts or ladders belonging to the center. Anyone outside of employees or subcontractors will have to source and provide their own equipment (Genie Lifts, Scissor Lifts or Ladders).



Hospitality

Catering

We have exclusive catering from our in-house food and beverage department. Our chefs will prepare a custom menu and adhere to any dietary and food allergies that your touring party requests. We will also be able to do the hospitality pre-shop for dressing rooms.

Please send all hospitality requests and questions to

Bassem Maarouf

bmaarouf@cobbgallery.com

770-989-5091

Abol Ghoreishi

aghoreishi@cobbenergycentre.com

770-916-2880

Our Catering area has space for 30 people to eat at a time and is located just off the loading area.

Alcohol

The venue's liquor license does not allow any outside alcohol to be brought into the building (This includes all backstage areas). **Alcohol must be purchased through the venue** and if specific alcohol brands are requested, please finalize your requests 4 days prior to your event.

Runners

We have a list of approved runners that can be sourced through Cepac. The venue is not able to rent vehicles, however promoters are welcome to rent vehicles for runner use if personal vehicles are not adequate. You are also welcome to source your own runner for an event.



Backstage Policies

1. **Access:** All show personnel are required to sign in with security at the Stage Door and receive the CEPAC ID card valid for the time period that the performance has been booked. No activity will be allowed on the stage, grid, fly loft, loading galleries, pit, control booths, sound booths, dimmers rooms, amp rooms, or other technical support areas unless there are House stage crew present. (See "Venue Personnel and Stage Labor")
2. **Alterations to Facility:** Building structure alterations of any kind are not permitted without the written approval of the Cobb Energy Performing Arts Centre Managing Director. Alterations include holes, traps, additional projection booths, and supports. The presenter, at the conclusion of the performance run, must restore any approved alterations to its original condition.
3. **Animals:** Only service animals or animals used in the performance are allowed in the building. The Technical Director must be notified about those animals before their arrival.
4. **Booths:** Audio transcription, follow spot, lighting and sound booths are for working personnel only. Due to the sensitive nature of the equipment, food, drink and smoking are not permitted in these areas. Contact the Cobb Energy Centre's Technical Director or any member of the house stage crew to gain access to the booths. These booths cannot be used for "dead case" storage. All empty cases must be stored backstage.
5. **Clearance of Hallways and Access Points:** At all times, aisles, hallways, doorways, and stairwells must remain clear of obstruction. Consult with the Cobb Energy Performing Arts Centre Production Manager.
6. **Damage:** Presenters are responsible for all damage to the facility and its equipment during the engagement.
7. **Dressing Rooms:** Dressing Rooms are cleaned daily, usually in the morning. If you would like an alternate cleaning schedule or if you do not want the dressing rooms cleaned, please inform the Production Manager, or the Director of Operations of your preferred cleaning schedule. Backstage halls, stairways and public spaces are also cleaned daily. Please let us know in advance of any special request regarding custodial services.
8. **Equipment:** All Cobb Energy Performing Arts Centre equipment shall be operated in a safe manner by technicians trained in the proper and safe handling of said equipment. Technicians who operate Cobb Energy Centre equipment in an unsafe or inappropriate manner will be asked to leave the facility and will not be allowed to work on future Cobb Energy Centre stage crews.
9. **Firearms:** Weapons of any kind are not permitted at the Cobb Energy Performing Arts Centre. Weapons used in a performance must be approved by the Technical Director and Public Safety Manager.
10. **Load-in/Load-out:** No equipment or show-related materials may be delivered before the (load-in) or first scheduled date unless prior approval has been granted by the Cobb Energy Performing Arts Centre Technical Director. All equipment and show related materials must be removed immediately after the final performance unless approval has been obtained from the Centre's Technical Director prior to load-out.
11. **Restore:** All Users of the John A. Williams Theatre are responsible for restoring the Theater and its equipment to the same location and condition in which the equipment was found, unless prior arrangements have been made with the Cobb Energy Performing Arts Centre Technical Director. A repair fee will be charged for any damage to the stage floor including lag bolts, screwed down flooring, etc.
12. **Safety:** It is the responsibility of everyone to ensure a safe work environment. The Cobb Energy Centre House Crew will not allow activity that they deem to be unsafe.
13. **Signage:** Absolutely NO nails, tacks, tape, or adhesive of any kind should be used on any surfaces of the theatre, lobbies, dressing rooms or other areas. Blue painter's masking tape is available upon request. Please contact the Technical Director before posting anything on the doors or walls. Nothing can be hung from chandeliers, sprinkler pipes or other fixtures of the theatre. No signs or decorations are allowed on the building exterior or sidewalk. Any outdoor décor or signage must be approved by the Managing Director or Director of Facility Operations.
14. **Smoking:** Smoking and vaping are prohibited throughout the Cobb Energy Performing Arts Centre, except in those areas designated as a smoking and vaping area. The raised area of the loading dock is a non-smoking area. Smoking and vaping ordinance requires that all smokers/vapers be at least 25' from an exterior entrance.
15. **Tools Usage:** All Cobb Energy Performing Arts Centre are for the sole use of Cobb Energy Centre employees and will not be allowed to be loaned out. .
16. **Waiver Request:** Any waiver requests to the above rules should be addressed in writing to the Cobb Energy Performing Arts Centre Managing Director.
17. **Traffic:** Traffic officers are required for all performances with over 1,000 guests. CEPAC will make the final decision on how many traffic officers are needed for an event. The number of officers for traffic will not



COBB ENERGY

PERFORMING ARTS CENTRE

exceed 6 for any one performance. The cost for hiring the traffic officers is \$65.00/hour with a minimum of four hours reporting pay. This will be part of the final settlement.

As a rule, one security officer is required per 500 people. CEPAC reserves the right to use our in-house security company and our designated security company in the interest of public safety and the safety of CEPAC. The Public Safety Manager will determine the number of officers needed based on ticket sales and history of the event. CEPAC reserves the right to use CCSO in place of security if deemed necessary. The charge for CEPAC security is listed on the rental form.

18. **Emergency Medical Technician:** One EMT is required for all events in the theater. Contract Manager can provide you with the current rates. (With a 4 Hour Minimum) This will be part of the final settlement.
19. **Parking:** Parking is not permitted in the loading dock area unless previous arrangements have been made. The dock area is designated for loading and unloading only. If you are unloading items from your car, please do so and then move the car to one of the nearby parking lots. Loading dock parking includes 3 bus slots with Shore Power available in each

VENUE PERSONNEL AND STAGE LABOR

1. **Personnel Expense:** All presenters reimburse the Cobb Energy Performing Arts Centre for all personnel expenses related to their event in the John A. Williams Theatre. Minimum calls for Cobb Energy Centre Stage Personnel are 4 hours per call. Load-in, Show-call, and Load-out are considered separate calls. The Technical Director will inform us of these rates and the time for confirming details for the show.
2. **Overtime:** Personnel will be billed at time and a half of the prevailing rate after 8 hours in a day; time-and-a-half for all hours worked over 40 regular rate hours per week; time and a half for all hours between 12:00am(midnight) and 8:00am and double time for approved Cobb Energy Performing Arts Centre holidays. All hours worked on Sunday will be time and a half.
3. **List of Holidays:**

| | |
|-------------------------|------------------------|
| New Years Day | Labor Day |
| MLK Day | Thanksgiving Day |
| Good Friday | Day After Thanksgiving |
| Memorial Day | Christmas Eve |
| 4 th of July | Christmas Day |



Fire Safety Policies

- All Pyrotechnic, Radiation (Laser), and other potentially dangerous effects must be approved in advance by Cobb Energy Performing Arts Centre. The Production Manager or representative must be in attendance during the Fire Marshal's inspection and permit approval. It is the responsibility of the presenter to secure all applicable permits and schedule the inspection with the Fire Marshal's office and Production Manager.
- Any pyro requests **must be submitted to the probate court no later than 10 business days before the event**, any later and pyro will not be approved for use by the Fire Marshal Office.
- **Liability for these effects is solely the presenter's responsibility.**
 - o This includes Cold Spark Machines as referred to by Cobb County Fire Code:
3.3.40 Pyrotechnic Device
Any Device containing pyrotechnic material or pyrotechnic effect simulation equipment and capable of producing a special effect as defined in this standard.
3.3.41 Pyrotechnic Effect Simulation Equipment
Equipment that uses a chemical mixture, heat source, and the introduction of oxygen to initiate or maintain combustion and is used to produce visible or audible effects by combustion, deflagration, or detonation.
3.3.42 Pyrotechnic Material (Pyrotechnic Special Effects Material)
A chemical mixture that contains sufficient oxygen or oxidizing agent required to initiate or maintain combustion and is used in the entertainment industry to produce visible or audible effects by combustion, deflagration, or detonation. (Such a chemical mixture consists predominantly of solids capable of producing a controlled, self-sustaining, and self-contained exothermic chemical reaction that results in heat, gas, sound, light or a combination of these effects. The chemical reaction functions without external oxygen.)
- The use of Theatrical Haze and Fog must be cleared by the venue's Production Manager prior to the date of the show. These effects necessitate bypass of smoke detectors and require Fire Marshal supervision. Haze MAY NOT be used until the Cobb Energy Production team has had the fire suppression system put into test mode.
- Fire Watch is billed at \$85/hr. A 5-hour minimum will be included in pre-settlement and can be discussed at time of settlement.

Cobb County Fire Marshal's Office

Mike Medley

michael.medley@cobbcounty.org

www.cobbfmo.org



Sound System Information Packet



Sound System Information Packet

| Quantity | Make & Model | FOH SYSTEM |
|---------------------------------|-------------------------|---|
| 28 | Meyer Panther | L/R Line Arrays (14x Per Side) |
| 2 | Meyer 600 HP | Dual 15 Sub |
| 2 | Meyer 700 HP | Dual 18 Sub |
| 3 | Meyer 2100 HP | Flown Cardiod Subs (Center) |
| 6 | Meyer Leopard | Dual 18 Sub |
| 4 | Meyer M1D | Front Fills |
| 8 | Meyer MM4 | Stage Lip Built in Front Fill |
| DELAY SYSTEM | | |
| 4 | Meyer Mica | L/R Delay Fill (2x Per Side) |
| 14 | Meyer M1D | Balcony Under-Fill |
| 2 | Meyer UPM-2P | Far Left & Right Upper Grand Tier Delays |
| 4 | Meyer UPA-1P | Center & Inner Left & Right Upper Grand Tier Delays |
| 2 | Meyer UPM-2P | Proscenium Down-Fill |
| MONITORS AND NON FIXED SPEAKERS | | |
| 2 | Meyer UPA-1P | Stage Monitor or Additional Front Fills |
| 12 | Community XLT-48E | Non-BiAmped Stage Monitors |
| 8 | Meyer CQ2 | Side Fill Top |
| 6 | DB Technology FMX 12 | Powered Low Profile Stage Monitor |
| 1 | DB Technologies Sub 615 | Drum Sub |

| FOH Equipment | | |
|---------------|----------------------|--------------------------------|
| Quantity | Make & Model | Use |
| 1 | Yamaha CL5 | 64 Channel Digital Console |
| 1 | Yamaha QL5 | 64 Channel Digital Console |
| 1 | Yamaha PM5D (non RH) | 48 Channel Digital Console |
| 2 | Yamaha 3212 RiO | Stage Box for Yamaha Console |
| 2 | Galaxy Processor | Meyer DSP |
| 1 | Q-SYS 110f Core | House Audio/Video Distribution |
| 1 | Apple Mini Mac | House music and QLAB |
| 1 | Yamaha DM3D | Small frame Dante Mixer |

| Microphones | | |
|-------------|---------------------|-------------|
| Quantity | Wired | Use |
| 10 | Shure B58 | |
| 4 | Shure B98 | |
| 2 | Shure SM81 | |
| 1 | EV RE20 | |
| 10 | Shure SM58 | |
| 5 | Shure SM57 | |
| 2 | Shure B52 | |
| 2 | AKG 414 | |
| 2 | AKG 451 | |
| 2 | Sennheiser 421 | |
| 6 | Crown PPC160 | |
| WIRELESS | | |
| 2 | Shure ULX-D4Q | Rack Unit |
| 8 | Shure SM58 ULXD2 | Handheld |
| 8 | Shure ULXD1 | Body Pack |
| 4 | DPA d:fine Headsets | Headset Mic |
| 4 | Sennheiser MKE-2 | Lavalier |

| Snake Run Lengths | |
|---|----------|
| | Distance |
| Down Stage L&R to Orchestra Pit | |
| Orchestra Pit to Mid House Mix | 60' |
| Mid House Mix to Sound Booth (Broadway mix) | 100' |
| Sound Booth to Lighting Booth | 100' |
| Loading Dock to Stage | 50' |
| | 80' |

| Sound Isolated Power | |
|----------------------|--------------------------------------|
| Amps | Location |
| 200 amp (Cam-lock) | Down Stage Left Wall |
| 200 amp (Cam-lock) | Up Stage Right Wall |
| 20 amp (Edison) | At all mix positions and stage walls |

Other Systems and Information

- Production Intercom - House Intercom system is Clear-Com
 - Four channels are available in production locations and backstage areas.
 - Single and dual belt packs are available
 - House Clear-Com is Wired Only, No Wireless is available
- Backstage Program and Paging
 - Theatre program feed and road paging is patchable
 - Stage Manager paging plates are located stage left, stage right, and stage manager's office.
- Lobbies
 - Theatre program can be sent to lobbies

• Information and Policies:

- The house has no decibel limitations but retains the right to ensure the protection of house equipment.
- Theatre has an unoccupied average reverb time of 1.5 seconds.
 - Acoustical curtains are located on rear wall, side walls, and proscenium wall of theatre. Curtains are fully adjustable and on average give a 1 second difference on reverb times.
- Our typical FOH patch is Left, Right, Front Fill and Subwoofer
 - Delay, Backstage, Lobby, and ALS feeds are summed from Left/Right
 - ALS Feed through Sennheiser Mobile Connect
- No cables or snakes are allowed to be run through audience areas. Eight-inch PVC conduits and wall pass-through holes are available for cable paths
- 250ft Snake is recommended for FOH splits.
- **A split snake and power distro are not available in house.**
- **Supplemental sub-woofers for the deck are recommended for concerts.**
Local rental company information available upon request.



Lighting System Information Packet

Lighting Positions Available:

Mid Catwalk, Near Catwalk, Grand Tier Rail, Mezzanine Rail, 5 Box Rails SL and SR, Tech Gallery SL and SR, Proscenium Ladder SL and SR, and stage. These positions are equipped with 3pin stage pin and/or 6 circuit Socapex connectors.

| Fixture Inventory Available other than Rep Plot | | |
|---|---------------|--|
| Quantity | Make | Model |
| 24 | ETC Source 4 | 5-degree barrel |
| 3 | ETC Source 4 | 10-degree barrel |
| 28 | ETC Source 4 | 19-degree barrel |
| 33 | ETC Source 4 | 26-degree barrel |
| 33 | ETC Source 4 | 36-degree barrel |
| 6 | ETC Source 4 | 50-degree barrel |
| 106 | ETC Source 4 | Source 4 Bodies with 750 watt lamp |
| 28 | Selecon Arena | 8" Fresnel with 2.2k watt lamp |
| 20 | ETC Source 4 | PAR with 750 watt lamp (VNSP, NSP, MFL, WFL) |
| 10 | L&E | MR16 6' strips with 75 watt lamp |
| 12 | HUI | 3 Cell Groundrow Cyc Unit 1kW |
| 4 | Lycian | 1293 X3K Long Throw Spot Lights |

| Onstage Rep Plot consists of: | | |
|-------------------------------|--------------|------------------------------|
| Quantity | Make | Model |
| 25 | ETC Source 4 | 26-degree with 750 watt lamp |
| 30 | ETC Source 4 | 36-degree with 750 watt lamp |
| 100 | ETC Source 4 | PAR with 750 watt lamp |
| 12 | HUI | 3 Cell Cyc Unit 1kW |

| FOH Rep Plot consists of: | | |
|---------------------------|---------------|--------------------------------|
| Quantity | Make | Model |
| 2 | ETC Source 4 | 5-degree with 750 watt lamp |
| 58 | ETC Source 4 | 10-degree with 750 watt lamp |
| 71 | ETC Source 4 | 19-degree with 750 watt lamp |
| 69 | ETC Source 4 | 26-degree with 750 watt lamp |
| 2 | Selecon Arena | 8" Fresnel with 2.2k watt lamp |

| Light Control Inventory | | |
|-------------------------|------------------|--|
| Quantity | Make | Model |
| 1 | ETC | ION Light Board w/40-fader wing |
| 728 | Strand | 2.4k Dimmers |
| 16 | Strand | 6k Dimmers |
| 1 | ETC | Fixed DMX 2-Port Gateway (on SL Jump) |
| 3 | ETC | Portable DMX 2-Port Gateways with Ethernet connector |
| 1 | Apple Ipod Touch | Wireless RFU |
| 1 | ETC | Paradigm system for House/Work Light Control |

| Company Switches / Disconnects | | |
|--------------------------------|-------------------------|--|
| Quantity | Location | Type |
| 1 | Grid | 200-amp 3-phase 120/208-volt Bus Duct with a 60 amp and 100 amp disconnect |
| 1 | Forestage Grid | 200-amp 3-phase 120/208-volt |
| 4 | Mid Gallery, Stage-Left | 400-amp 3-phase 120/208-volt |
| 1 | Stage, Down-left | 200-amp 3-phase 120/208-volt, isolated audio ground |
| 1 | Stage, Up-left | 400-amp 3-phase 120/208-volt |
| 1 | Stage, Up-left | 200-amp 3-phase 120/208-volt |
| 1 | Stage, Up-right | 200-amp 3-phase 120/208-volt, isolated audio ground |
| 2 | Loading Dock | 200-amp 3-phase 120/208-volt |
| 1 | Trap Room | 200-amp 3-phase 120/208-volt |

| Cable | | |
|----------|-------------------------------|--------------------|
| Quantity | Type | Length |
| 24 | 20A Stage Pin | 5' |
| 46 | 20A Stage Pin | 10' |
| 22 | 20A Stage Pin | 25' |
| 25 | 20A Stage Pin | 50' |
| 12 | 20A Stage Pin | 100' |
| 29 | 20A Stage Pin 2-fer | 2' |
| 25 | 6-Circuit Socapex | 100' |
| 20 | Socapex to Stage Pin Breakout | 1' to 6' staggered |
| 2 | Socapex to Edison Breakout | 6' |
| 8 | 60A Stage Pin | 25' |
| 3 | 60A Stage Pin | 50' |

Lighting System Information Packet

| Cable Turnarounds | | |
|-------------------|-----------|------------------------------|
| Quantity | Type | Orientation |
| 2 | 5-Pin DMX | Female - Female |
| 17 | 5-Pin DMX | Male - Male |
| 3 | DMX | 3-Pin Female to 5-Pin Male |
| 4 | DMX | 5-Pin Female to 3-Pin Male |
| 6 | DMX | 3-Pin Female to 5-Pin Female |
| 18 | Power | Edison M to Stage Pin F |
| 25 | Power | Edison F to Stage Pin M |

Channel Magic Sheet

Onstage

RED (R26)

| DSL | | | DSR |
|-----------|-------------|-------------|-------------|
| 1E | 31 (361) | 32 (368) | 33 (373) |
| 2E | 34 (385) | 35 (392) | 36 (402) |
| 3E | 37 (409) | 38 (416) | 39 (421) |
| 4E | 40 (433) | 41 (440) | 42 (445) |
| 5E | 43 (457) | 44 (464) | 45 (469) |

BLUE (R80)

| DSL | | | DSR |
|-----------|-------------|-------------|-------------|
| 1E | 51 (362) | 52 (367) | 53 (374) |
| 2E | 54 (384) | 55 (391) | 56 (396) |
| 3E | 57 (408) | 58 (415) | 59 (420) |
| 4E | 60 (432) | 61 (439) | 62 (444) |
| 5E | 63 (456) | 64 (463) | 65 (468) |

Warm Hi-Sides (R318)

| SL | SR |
|------------------------|--------------|
| 1E 111 (355) | 112 (377) |
| 2E 113 (379) | 114 (401) |
| 3E 115 (403) | 116 (425) |
| 4E 117 (427) | 118 (449) |
| 5E 119 (451) | 120 (473) |

Cool Hi-Sides (L201)

| SL | SR |
|------------------------|--------------|
| 1E 121 (357) | 122 (375) |
| 2E 123 (381) | 124 (399) |
| 3E 125 (405) | 126 (423) |
| 4E 127 (429) | 128 (447) |
| 5E 129 (453) | 130 (471) |

GOBO Hi-Sides (Rosco 77785)

| SL | SR |
|------------------------|--------------|
| 1E 131 (356) | 132 (376) |
| 2E 133 (380) | 134 (400) |
| 3E 135 (404) | 136 (424) |
| 4E 137 (428) | 138 (448) |
| 5E 139 (452) | 140 (472) |

AMBER (R21)

| DSL | | | DSR |
|-----------|-------------|-------------|-------------|
| 1E | 71 (359) | 72 (365) | 73 (371) |
| 2E | 74 (383) | 75 (389) | 76 (395) |
| 3E | 77 (407) | 78 (413) | 79 (419) |
| 4E | 80 (431) | 81 (437) | 82 (443) |
| 5E | 83 (455) | 84 (461) | 85 (467) |

LIGHT BLUE (R65)

| DSL | | | DSR |
|-----------|--------------|--------------|--------------|
| 1E | 91 (358) | 92 (364) | 93 (370) |
| 2E | 94 (382) | 95 (388) | 96 (394) |
| 3E | 97 (406) | 98 (412) | 99 (418) |
| 4E | 100 (430) | 101 (436) | 102 (442) |
| 5E | 103 (454) | 104 (460) | 105 (466) |

Overhead Specials

| SL | | | | | SR |
|-----------|--------------|--------------|--------------|--------------|--------------|
| 1E | 171 (360) | 172 (363) | 173 (366) | 174 (369) | 175 (372) |
| 2E | 176 (386) | 177 (387) | 178 (390) | 179 (393) | 180 (398) |
| 3E | 181 (410) | 182 (411) | 183 (414) | 184 (417) | 185 (422) |
| 4E | 186 (434) | 187 (435) | 188 (438) | 189 (441) | 190 (446) |
| 5E | 191 (458) | 192 (459) | 193 (462) | 194 (465) | 195 (470) |

CYC

| | SL | | | | SR | |
|-------|--------------|--------------|--------------|--------------|--------------|--------------|
| Red | 141 (475) | 142 (478) | 143 (481) | 144 (484) | 145 (487) | 146 (490) |
| Green | 151 (476) | 152 (479) | 153 (482) | 154 (485) | 155 (488) | 156 (491) |
| Blue | 161 (477) | 162 (480) | 163 (483) | 164 (486) | 165 (489) | 166 (492) |

Channel Magic Sheet

Front of House

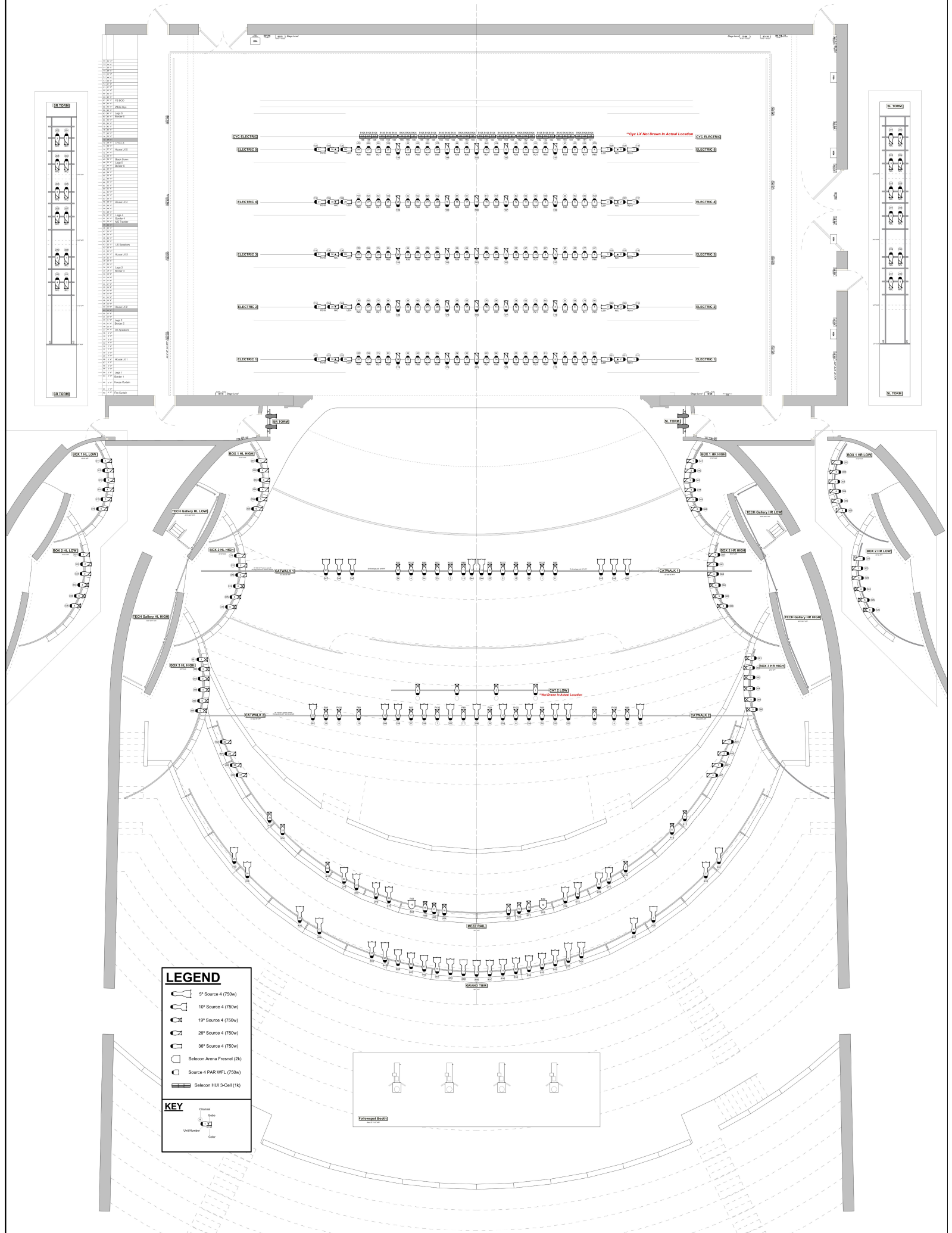
| Torms | | | | | | | | | | Box 1 High | | Box 2 High | | Box 3 High | | Box 1 Low | | Box 2 Low | |
|-------|-------|-------|-------|-------|-----|-------|-------|-------|-------|------------|-------|------------|-------|------------|-------|-----------|-------|-----------|-------|
| HL | | | | | HR | | | | | HL | HR | HL | HR | HL | HR | HL | HR | HL | HR |
| Hi | 201 | 202 | 203 | 204 | Hi | 221 | 222 | 223 | 224 | 351 | 341 | 371 | 361 | 391 | 381 | 311 | 301 | 331 | 321 |
| | (115) | (116) | (117) | (118) | | (133) | (134) | (135) | (136) | (216) | (234) | (222) | (240) | (283) | (301) | (156) | (174) | (162) | (180) |
| Mid | 205 | 206 | 207 | 208 | Mid | 225 | 226 | 227 | 228 | 352 | 342 | 372 | 362 | 392 | 382 | 312 | 302 | 332 | 322 |
| | (119) | (120) | (149) | (150) | | (137) | (138) | (139) | (140) | (215) | (233) | (221) | (239) | (284) | (302) | (155) | (173) | (161) | (179) |
| Low | 209 | 210 | 211 | 212 | Low | 229 | 230 | 231 | 232 | 353 | 343 | 373 | 363 | 393 | 383 | 313 | 303 | 333 | 323 |
| | (145) | (146) | (147) | (148) | | (141) | (142) | (143) | (144) | (214) | (232) | (220) | (238) | (285) | (303) | (154) | (172) | (160) | (178) |
| | | | | | | | | | | 354 | 344 | 374 | 364 | 394 | 384 | 314 | 304 | 334 | 324 |
| | | | | | | | | | | (213) | (231) | (219) | (237) | (286) | (304) | (153) | (171) | (159) | (177) |
| | | | | | | | | | | 355 | 345 | 375 | 365 | 395 | 385 | 315 | 305 | 335 | 325 |
| | | | | | | | | | | (212) | (230) | (218) | (236) | (287) | (305) | (152) | (170) | (158) | (176) |
| | | | | | | | | | | 356 | 346 | 376 | 366 | 396 | 386 | 316 | 306 | 336 | 326 |
| | | | | | | | | | | (211) | (229) | (217) | (235) | (288) | (306) | (151) | (169) | (157) | (175) |

| Grand Tier Front Wash | | | | | | | | | | Curtain Warmers | |
|-----------------------|-------|-------|-------|-------|-------|-------|--|--|--|-----------------|-------|
| HL | | | | | HR | | | | | HL | HR |
| Cool: | 451 | 452 | 453 | 454 | 455 | 456 | | | | 502 | 501 |
| | (255) | (247) | (250) | (260) | (263) | (267) | | | | (193) | (204) |
| N/C: | 461 | 462 | 463 | 464 | 465 | 466 | | | | | |
| | (256) | (248) | (251) | (259) | (262) | (266) | | | | | |
| Warm: | 471 | 472 | 473 | 474 | 475 | | | | | | |
| | (258) | (249) | (252) | (261) | (264) | | | | | | |

| Grand Tier Specials | | | | | | | | | | Catwalk #2 | | | | | | | | | | | |
|---------------------|-------|-------|-------|--|-------|-------|-------|--|--|------------------------|-------|-------|-------|----------------|-------|-------|-------|------------|-------|-------|-------|
| HL | | | | | HR | | | | | Blue (R60) | | | | No Color (N/C) | | | | Pink (R33) | | | |
| 10°: | 431 | 432 | 433 | | 434 | 435 | 436 | | | 15 | 16 | 17 | 18 | 5 | 6 | 7 | 8 | 25 | 26 | 27 | 28 |
| | (268) | (242) | (241) | | (227) | (228) | (254) | | | (690) | (700) | (708) | (721) | (682) | (698) | (704) | (720) | (681) | (694) | (702) | (719) |
| | | | | | | | | | | (178) | (188) | (196) | (209) | (170) | (186) | (192) | (208) | (169) | (182) | (190) | (207) |
| 5°: | | 441 | | | | 442 | | | | Catwalk Specials (10°) | | | | | | | | | | | |
| | | (257) | | | | (265) | | | | 251 | 252 | 253 | 254 | 255 | 256 | 257 | 258 | 259 | 260 | 261 | |
| | | | | | | | | | | (680) | (692) | (693) | (697) | (699) | (701) | (703) | (707) | (709) | (710) | (722) | |
| | | | | | | | | | | (168) | (180) | (181) | (185) | (187) | (189) | (191) | (195) | (197) | (198) | (210) | |

| Lower Mezzanine | | | | | | | | | | Catwalk #1 | | | | | | | | | | | | | | | | | | | | |
|-----------------|-------|-------|-------|-------|-------|-------|-------|-------|-------|---------------------------------------|--|-------|-------|----|--|--|--|-------|--|--|--|--|--|--|--|--|--|--|--|--|
| HL | | | | | HR | | | | | HL | | | | HR | | | | | | | | | | | | | | | | |
| 10°: | 271 | 272 | 273 | 274 | | 275 | 276 | 277 | 278 | Specials: 241 242 243 244 245 246 247 | | | | | | | | | | | | | | | | | | | | |
| | (189) | (190) | (191) | (192) | | (205) | (206) | (207) | (208) | | | | | | | | | | | | | | | | | | | | | |
| 19°: | 411 | 412 | 413 | | 421 | 422 | 423 | 424 | 425 | 426 | | 414 | 415 | | | | | 416 | | | | | | | | | | | | |
| | (164) | (163) | (188) | | (194) | (195) | (196) | (201) | (202) | (203) | | (209) | (181) | | | | | (182) | | | | | | | | | | | | |
| | | | | | | | | | | | | | | | | | | | | | | | | | | | | | | |
| 26°: | 401 | 402 | 403 | 404 | | 405 | 406 | 407 | 408 | | | | | | | | | | | | | | | | | | | | | |
| | (168) | (167) | (166) | (165) | | (183) | (184) | (185) | (186) | | | | | | | | | | | | | | | | | | | | | |

Only Catwalks are in Univ. 2.
(Top Dimmer) ETC Network
(Bottom Dimmer) Univ. 2/



LEGEND

9" Source 4 (750w)

10" Source 4 (750w)

19" Source 4 (750w)

28" Source 4 (750w)

39" Source 4 (750w)

Selecon Arena Fresnel (2k)

Source 4 PAR WFL (750w)

Selecon HUI 3-Cell (1k)

KEY

Channel

Radio

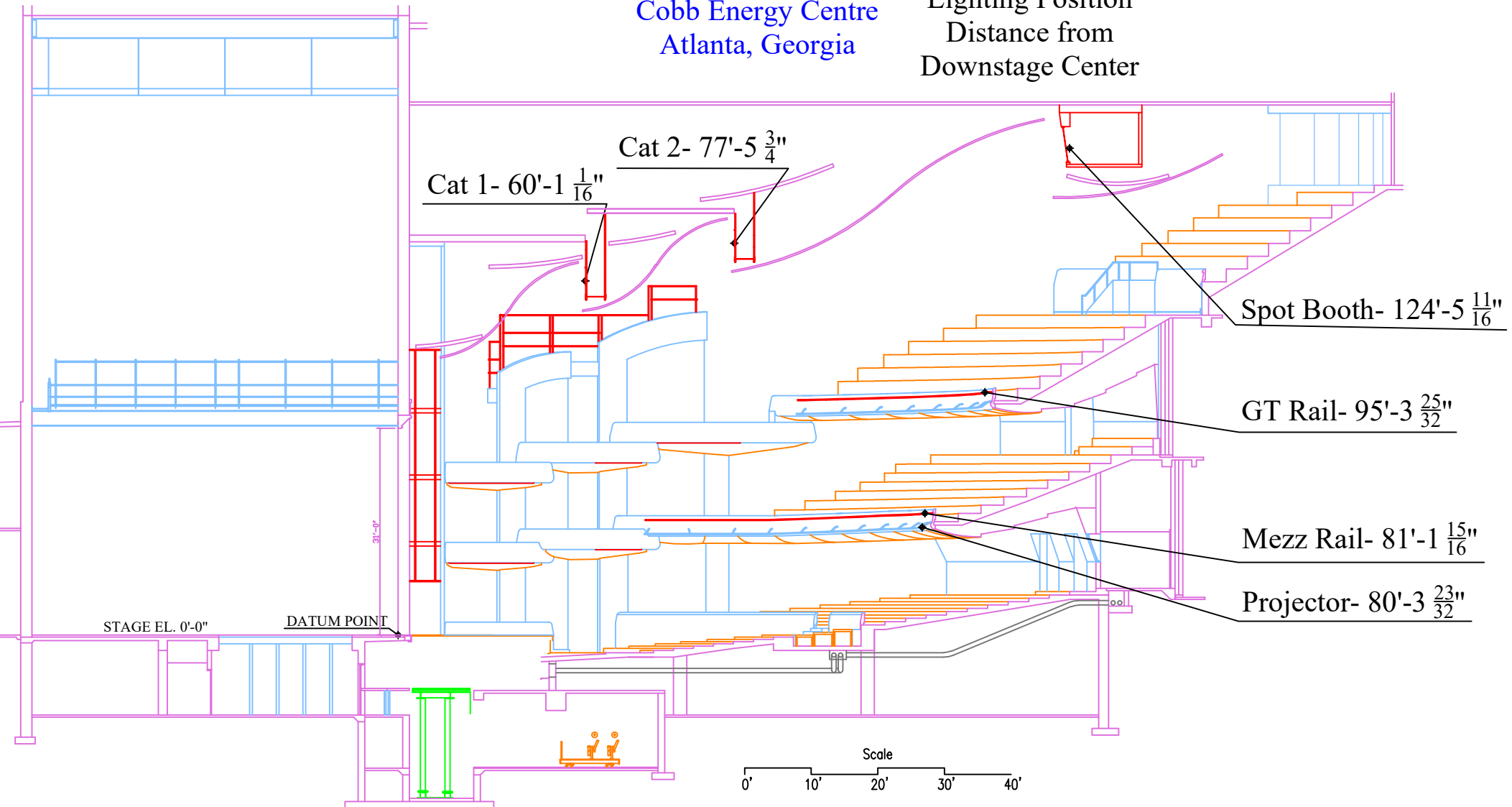
Unit Number

Color

Followspot Booth

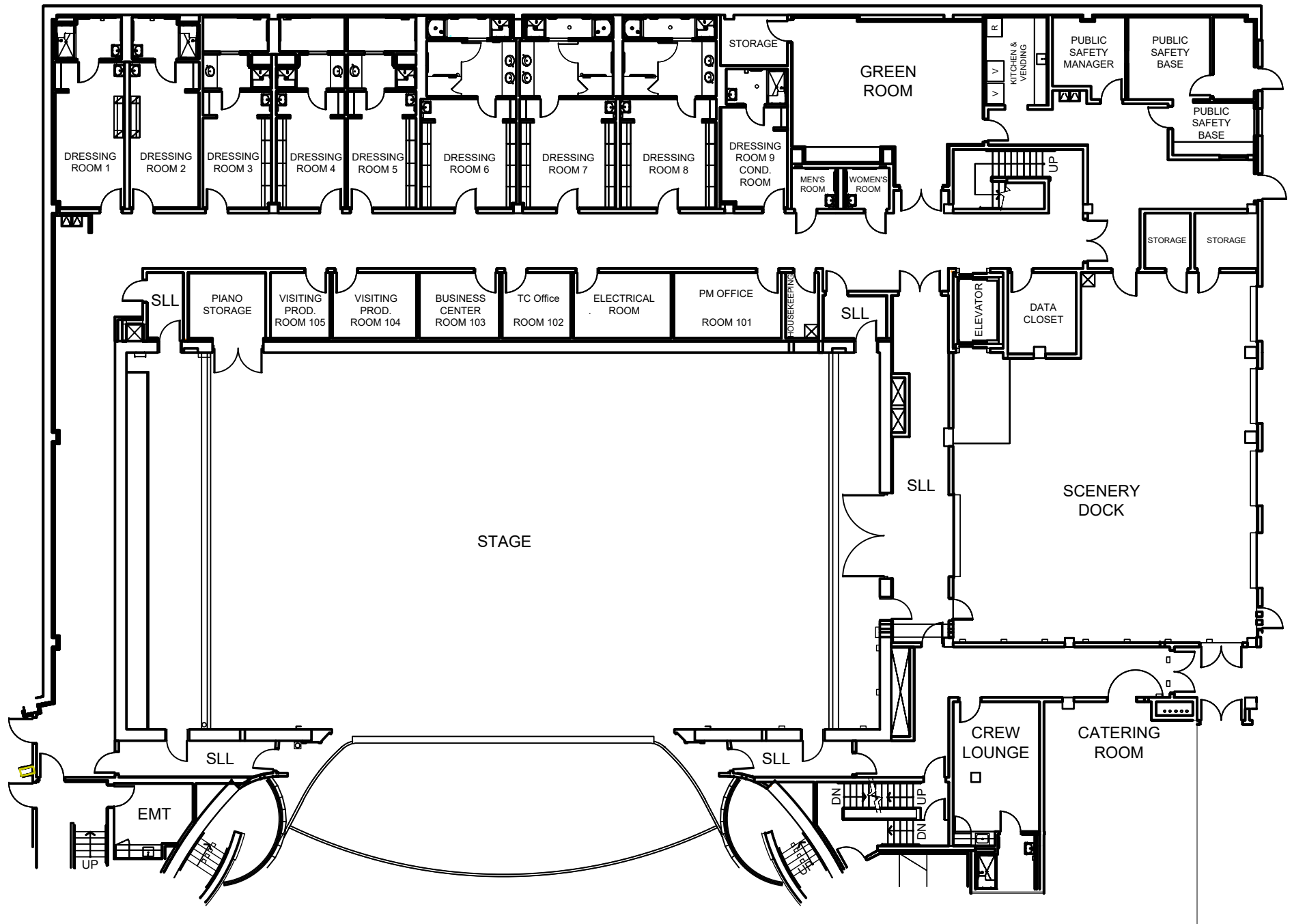
Cobb Energy Centre
Atlanta, Georgia

Lighting Position
Distance from
Downstage Center

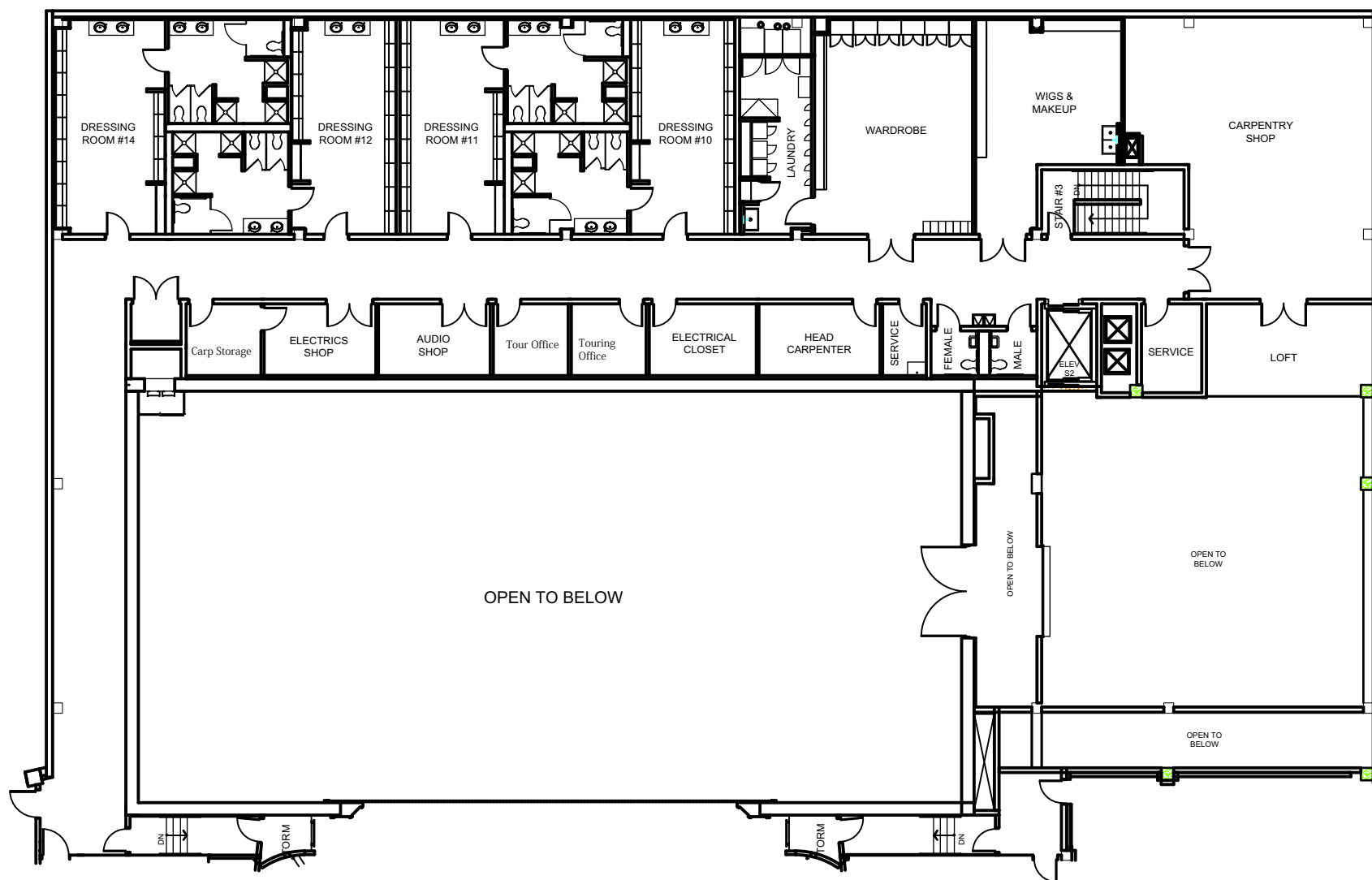




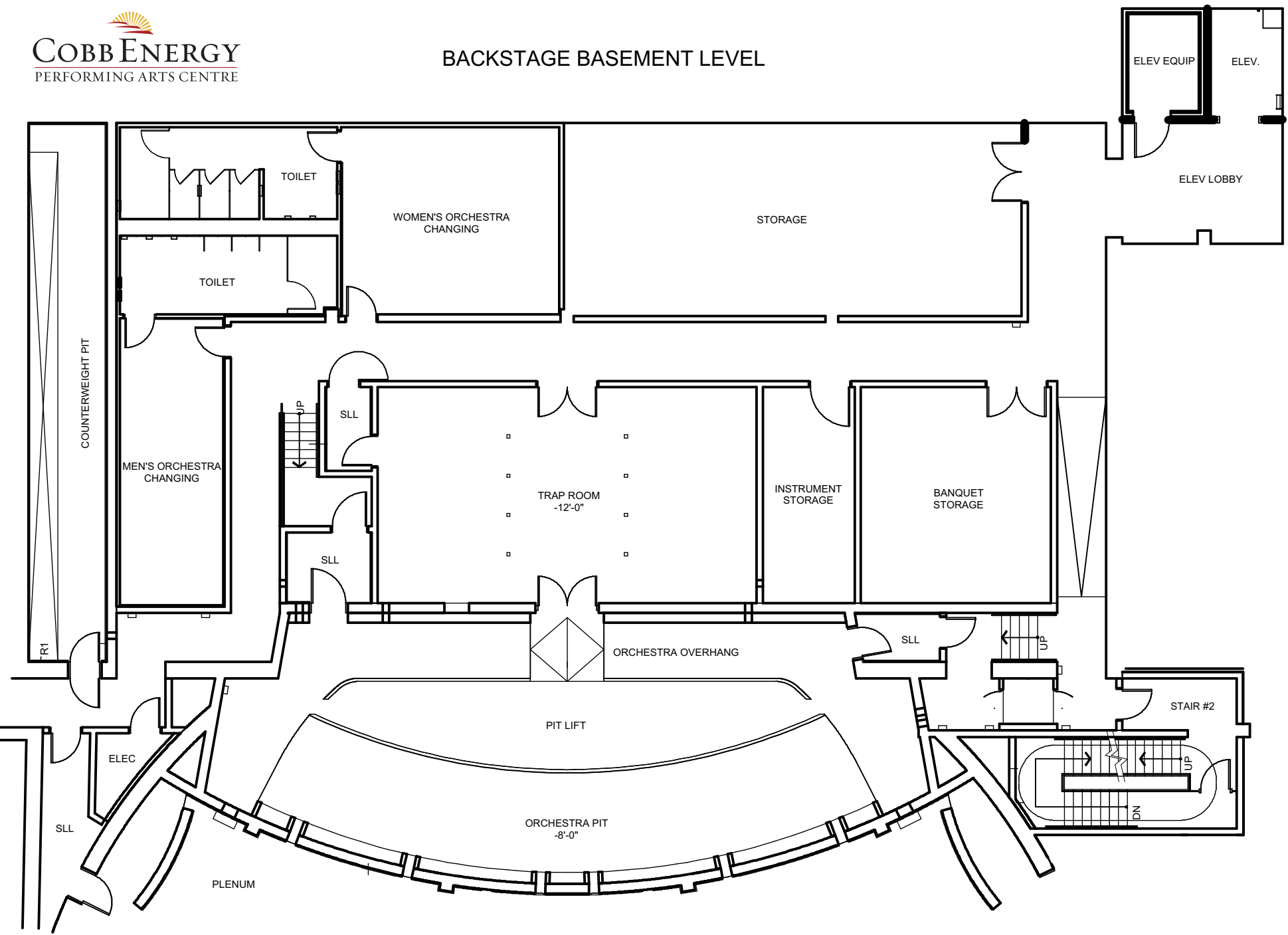
General Backstage Drawings

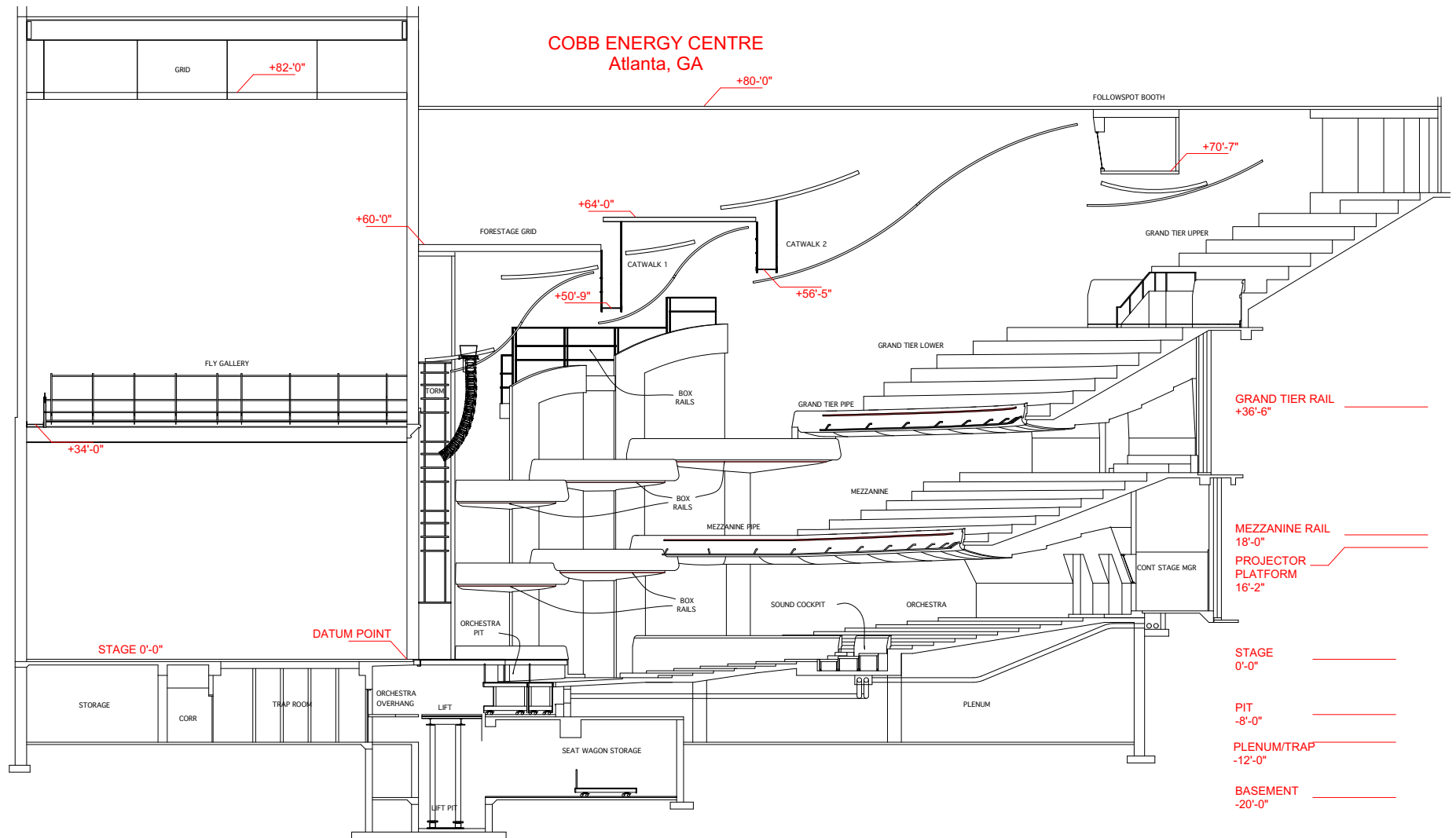


1st Floor Dressing Rooms

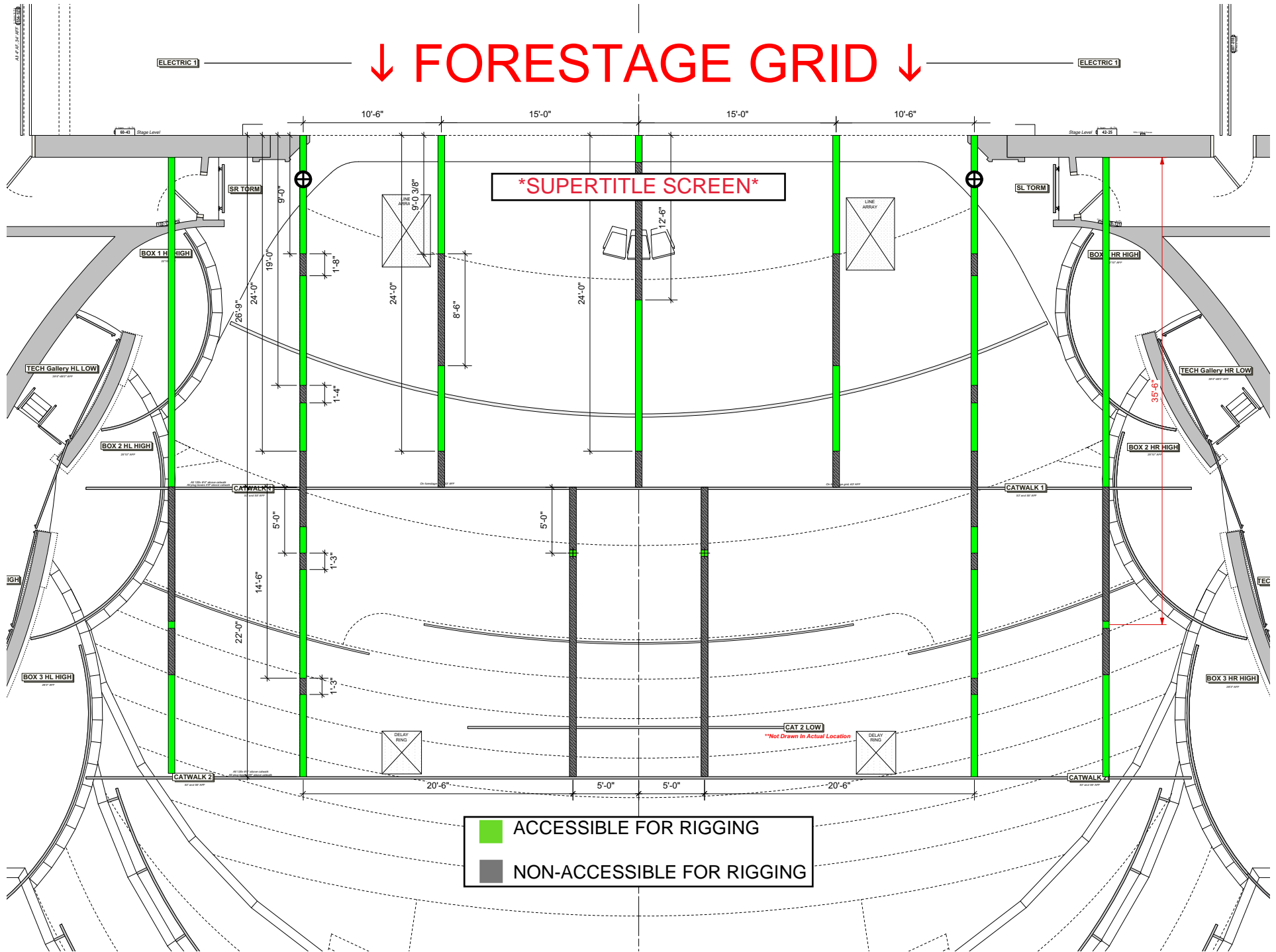


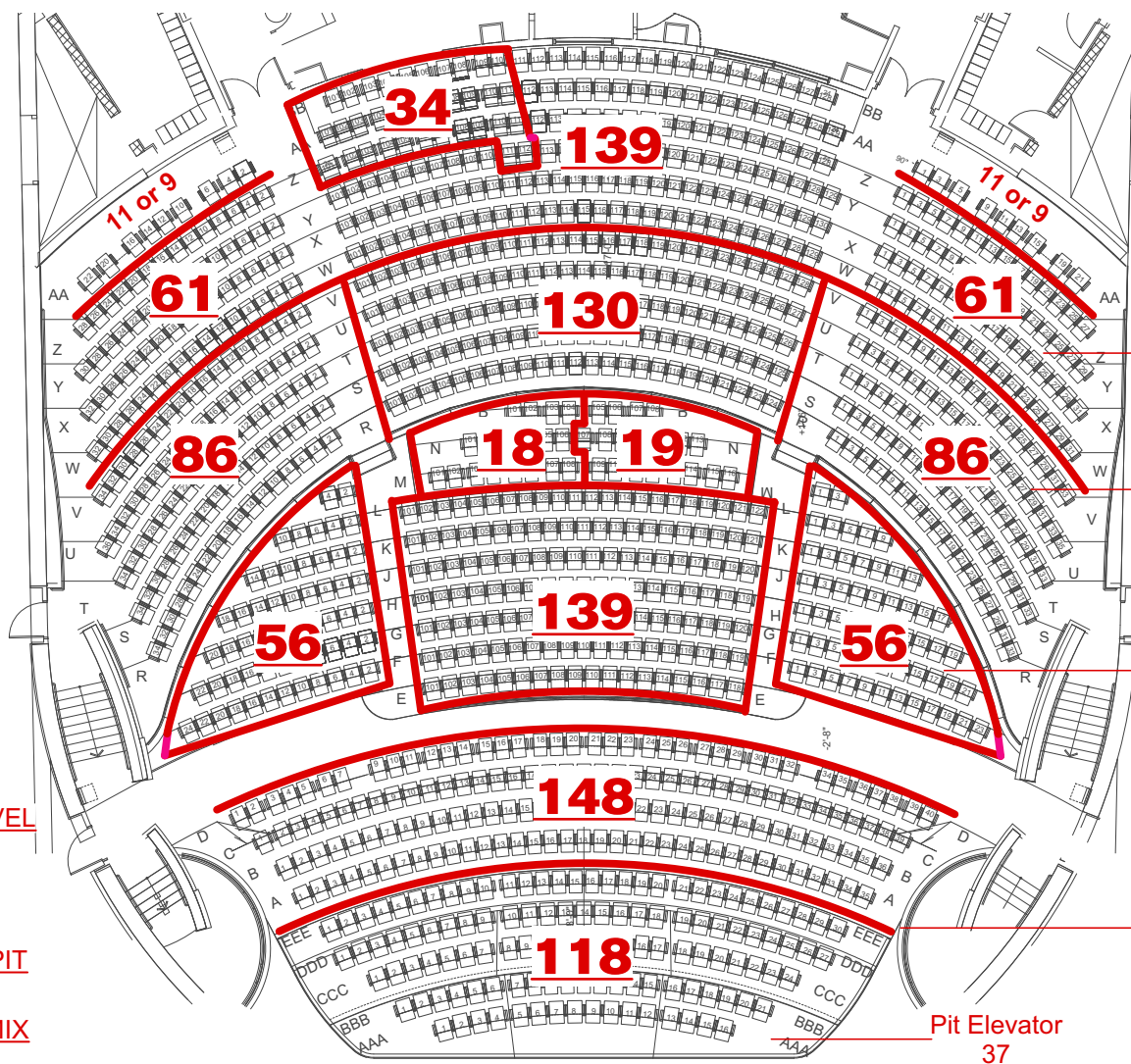
BACKSTAGE BASEMENT LEVEL





↓ FORESTAGE GRID ↓





TOTAL: 295

TOTAL: 302

TOTAL w/Half Mix: 270
TOTAL w/Full Mix: 251
TOTAL w/ NO Mix: 288

TOTAL
266

Pit Elevator
37

TOTAL ORCHESTRA LEVEL
1173

TOTAL with FULL PIT
1054

TOTAL with BROADWAY PIT
1135

TOTAL with BROADWAY MIX
1138

TOTAL with Full Mix
1135

TOTAL with Half Mix
1154

TOTAL BOX SEATS: 56

TOTAL SEATING CAPACITY: 2756

COBB ENERGY CENTRE
ORCHESTRA LEVEL
SCALING MAP



