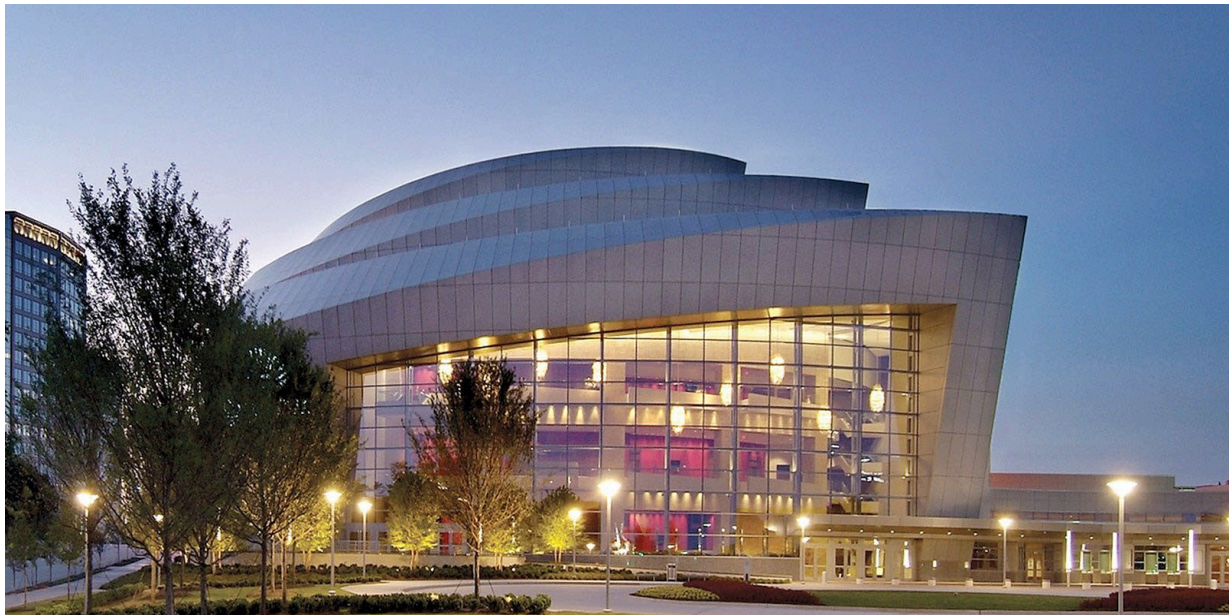




# TECHNICAL PACKAGE

UPDATE 9/20/2023



770.916.2800  
2800 Cobb Galleria Parkway  
Atlanta, GA 30339  
[www.cobbenergycentre.com](http://www.cobbenergycentre.com)





# COBB ENERGY

## PERFORMING ARTS CENTRE

### DOCK MAP



< I-75 Northbound

I-75 Southbound >

Marshalling Yard

Parking Lot

Access Road

Parking Deck

LOADING DOCK

THEATRE

Akers Mill Rd.

Cobb Galleria Pkwy





## **Staff**

### **Director of Production/Operations**

Brian Fiegelman

770.916.2915

[bfiegelman@cobbenergycentre.com](mailto:bfiegelman@cobbenergycentre.com)

### **Technical Coordinator**

Gage Gilmore

770.916.2902

[ggilmore@cobbenergycentre.com](mailto:ggilmore@cobbenergycentre.com)

### **Director Marketing/Programming**

Tom Rowland

770.916.2804

[trowland@cobbenergycentre.com](mailto:trowland@cobbenergycentre.com)

### **Front of House Manager**

Angie McManus

770.916.2935

[amcmanus@cobbenergycentre.com](mailto:amcmanus@cobbenergycentre.com)

### **Merchandise**

Alison Jordan

[Ali33jord@gmail.com](mailto:Ali33jord@gmail.com)

### **Production Manager**

Dave Ragsdale

770.916.2902

[dragsdale@cobbenergycentre.com](mailto:dragsdale@cobbenergycentre.com)

### **Contract/Settlement Manager**

Amanda Wilkins

770 916.2827

[awilkins@cobbenergycentre.com](mailto:awilkins@cobbenergycentre.com)

### **Public Safety Manager**

Jamie Wheeler

770.916.2910

[jwheeler@cobbenergycentre.com](mailto:jwheeler@cobbenergycentre.com)

### **Box Office Manager**

Russel Kennedy

770.916.2850

[rkennedy@cobbenergycentre.com](mailto:rkennedy@cobbenergycentre.com)





### **Stage Dimensions**

Proscenium Opening:	50' wide X 31' high.
Stage Depth:	55'
Stage Width:	110'
Stage Height above Audience:	40"
Stage Height above Orchestra Pit:	8'
Apron Depth:	2'
Apron Depth w/Gala Lift:	11'
Orchestra Pit Depth (Broadway):	15'
Stage floor to trap room floor:	12'
Grid Height:	82'
Mid Gallery Height:	34'
Air Duct SL	24'
Lower Loading Gallery Height:	73'
Upper Loading Gallery Height:	82'

### **Loading Doors**

Dock Doors:	10'-6" high x 8' wide
Interior door to stage:	19'-6" high x 11'-9" wide
Dock Height:	47" (Standard Semi-trailer)

### **Loading Dock**

The dock can accommodate 4 trucks. Dock D is available for loading and unloading only. Trucks may not be parked in Dock D for the duration of an event. Each door has a dock leveler. The dock opens onto a Scenery Bay with access to Stage-Left. There is a sound isolation door between the Scenery Bay and Stage-Left.

### **Counterweight Fly System**

Number of Line-sets:	95 (6" O.C.)
Line-set Construction:	1.5" od Truss Batten
Batten Length:	66'
Batten Out Trim:	79'
Batten In Trim:	4'
Arbor Capacity:	2100 #'s

### **Rigging**

**All Rigging MUST be approved by the production manager prior to arrival.**  
Rigging must be done by an approved vendor. (we use Rhino if client has no preference)





### **Soft Goods**

House Curtain: Eggplant 36'h x 66' wide motorized guillotine; manual travel

Border: Black 15'h x 66'w Qty 6

Legs: Black 30'h x 14'w Qty 6 sets

Tabs: Black 30'h x 20'w Qty 4

Cyc: White 30'h x 64'w Qty 1

Scrim: White and black 30'h x 64'w Qty 1 Each

Full Stage Blackout: Black 30'h x 32'w Qty 1 Set

### **Variable Acoustics**

The auditorium features acoustic curtains that can be stored or deployed over walls.

### **Stage Floor**

The stage floor, in order of construction, includes a vapor barrier, sleepers on neoprene pads, 2 layers of 3/4" inch plywood, and is topped with 1/4" Masonite.

A black Marley dance floor is available.

Approx. Dimension 60' wide x 38' deep

### **Orchestra Pit**

The Orchestra pit can be arranged as a Standard Broadway Pit accommodating approximately 14 people or a Full Pit accommodating approximately 60 people, comfortably. The Broadway Pit removes rows AAA and BBB from audience seating. The Full Pit removes rows AAA through EEE.

### **Orchestra Pit Accessories**

100 – Musicians Chairs

100 – Music Stands with stand lights

1 – Wenger Conductor's Podium

### **Staging**

Wenger Risers (carpeted) – All risers can be 8", 16", or 24" high.

8 – 4' x 8'

6 – 4' x 6'

4 – 4' x 4'

4 – 3' x 3'

### **Other Equipment**

Plexi-glass Lectern

Wooden Lectern

1 Supertitle LED Screen



## **Projection**

One Digital Projection 21k M-Vision Laser Projector and 11'x20' Front or Rear Projection Screen are available for an additional rental fee. The projector can be placed on stage or on a mezzanine platform 75' from stage.

## **Video and Audio Distribution**

The Audio and video distribution for the building is done through Dante and NDI through Birdog 4k video switching controlled by Q-Sys Control. The system can take either HDMI or SDI through multiple patch points in the theatre.

## **Wardrobe**

There are separate Wardrobe and Wig/Makeup rooms on the 2<sup>nd</sup> Level. Each is equipped with a sink. The wardrobe room has 2 washers and 3 dryers.

## **Piano**

We have a Steinway D Full Grand Piano on site. If you would like to use it, please contact the Production Manager (There is a separate charge for use not included in the technical package)

## **Labor**

- A small in-house crew is available, please call for details.
- The staff of Cobb Energy Performing Arts Centre is available to aid on labor needs through Rhino Georgia. All other companies will be billed through the promoter.
- The Cobb Energy Performing Arts Centre has a small list of runners who may be contracted at the prevailing rate. The Centre does not rent vehicles for any reason, any rental vehicle must be procured and insured by the presenter/promoter/producer.
- Vendor lists for Backline, Catering, Audio, Video, Lighting, and Labor can be provided by CEPAC production team.

## **Stage Lifts**

- All lifts will be inspected prior to ensure.
  - No visible leakage of oil, hydraulic fluid, etc.
  - Battery if present in good condition.
  - Tires/wheels in good condition.
  - Platform in good condition
- The Lift will be lowered to its lowest limit prior to moving unless it is designed to move while the platform is elevated.
- A spotter will accompany the lift to advise of hazards on the ground.
- The lift will only be operated on level surfaces.
- Only CEPAC Staff will be allowed to operate any lifts or ladders belonging to the center. Anyone outside of employees or subcontractors will have to source and provide their own equipment (Genie Lifts, Scissor Lifts or Ladders).





## **Backstage Policies**

1. **Access:** All show personnel are required to sign in with security at the Stage Door and receive the CEPAC ID card valid for the time period that the performance has been booked. No activity will be allowed on the stage, grid, fly loft, loading galleries, pit, control booths, sound booths, dimmers rooms, amp rooms, or other technical support areas unless there are House stage crew present. (See "Venue Personnel and Stage Labor")
2. **Alterations to Facility:** Building structure alterations of any kind are not permitted without the written approval of the Cobb Energy Performing Arts Centre Managing Director. Alterations include holes, traps, additional projection booths, and supports. The presenter, at the conclusion of the performance run, must restore any approved alterations to its original condition.
3. **Animals:** Only service animals or animals used in the performance are allowed in the building. The Technical Director must be notified about those animals before their arrival.
4. **Booths:** Audio transcription, follow spot, lighting and sound booths are for working personnel only. Due to the sensitive nature of the equipment, food, drink and smoking are not permitted in these areas. Contact the Cobb Energy Centre's Technical Director or any member of the house stage crew to gain access to the booths. These booths cannot be used for "dead case" storage. All empty cases must be stored backstage.
5. **Clearance of Hallways and Access Points:** At all times, aisles, hallways, doorways, and stairwells must remain clear of obstruction. Consult with the Cobb Energy Performing Arts Centre Production Manager.
6. **Damage:** Presenters are responsible for all damage to the facility and its equipment during the engagement.
7. **Dressing Rooms:** Dressing Rooms are cleaned daily, usually in the morning. If you would like an alternate cleaning schedule or if you do not want the dressing rooms cleaned, please inform the Production Manager, or the Director of Operations of your preferred cleaning schedule. Backstage halls, stairways and public spaces are also cleaned daily. Please let us know in advance of any special request regarding custodial services.
8. **Equipment:** All Cobb Energy Performing Arts Centre equipment shall be operated in a safe manner by technicians trained in the proper and safe handling of said equipment. Technicians who operate Cobb Energy Centre equipment in an unsafe or inappropriate manner will be asked to leave the facility and will not be allowed to work on future Cobb Energy Centre stage crews.
9. **Firearms:** Weapons of any kind are not permitted at the Cobb Energy Performing Arts Centre. Weapons used in a performance must be approved by the Technical Director and Public Safety Manager.
10. **Alcohol:** Due to the guidelines of the Theater liquor license, all alcohol purchased for consumption in the building must be purchased through the Cobb Energy Performing Arts Centre's Food & Beverage Department. Please advance all alcohol minimum 4 days before performance.
11. **Load-in/Load-out:** No equipment or show-related materials may be delivered before the (load-in) or first scheduled date unless prior approval has been granted by the Cobb Energy Performing Arts Centre Technical Director. All equipment and show related materials must be removed immediately after the final performance unless approval has been obtained from the Centre's Technical Director prior to load-out.
12. **Restore:** All Users of the John A. Williams Theatre are responsible for restoring the Theater and its equipment to the same location and condition in which the equipment was found, unless prior arrangements have been made with the Cobb Energy Performing Arts Centre Technical Director. A repair fee will be charged for any damage to the stage floor including lag bolts, screwed down flooring, etc.
13. **Safety:** It is the responsibility of everyone to ensure a safe work environment. The Cobb Energy Centre House Crew will not allow activity that they deem to be unsafe.
14. **Signage:** Absolutely NO nails, tacks, tape, or adhesive of any kind should be used on any surfaces of the theatre, lobbies, dressing rooms or other areas. Blue painter's masking tape is available upon request. Please contact the Technical Director before posting anything on the doors or walls. Nothing can be hung from chandeliers, sprinkler pipes or other fixtures of the theatre. No signs or decorations are allowed on the building exterior or sidewalk. Any outdoor décor or signage must be approved by the Managing Director or Director of Facility Operations.
15. **Smoking:** Smoking and vaping are prohibited throughout the Cobb Energy Performing Arts Centre, except in those areas designated as a smoking and vaping area. Smoking and vaping ordinance requires that all smokers/vapers be at least 25' from an exterior entrance.
16. **Tools Usage:** All Cobb Energy Performing Arts Centre are for the sole use of Cobb Energy Centre employees and will not be allowed to be loaned out. .
17. **Waiver Request:** Any waiver requests to the above rules should be addressed in writing to the Cobb Energy Performing Arts Centre Managing Director.



# COBB ENERGY

---

## PERFORMING ARTS CENTRE

18. **Traffic:** Traffic officers are required for all performances with over 1,000 guests. CEPAC will make the final decision on how many traffic officers are needed for an event. The number of officers for traffic will not exceed 6 for any one performance. There is a minimum of four hours which will be billed at the prevailing rate. This will be part of the final settlement.  
As a rule, one security officer is required per 500 people. CEPAC reserves the right to use our in-house security company and our designated security company in the interest of public safety and the safety of CEPAC. The Public Safety Manager will determine the number of officers needed based on ticket sales and history of the event. CEPAC reserves the right to use CCSD in place of security if deemed necessary. The charge for CEPAC security is listed on the rental form.
19. **Emergency Medical Technician:** One EMT is required for all events in the theater. The charges have 4 Hour Minimum and will be billed at the prevailing rates. This will be part of the final settlement.
20. **Parking:** Parking is not permitted in the loading dock area unless previous arrangements have been made. The dock area is designated for loading and unloading only. If you are unloading items from your car, please do so and then move the car to one of the nearby parking lots. Loading dock parking includes 4 bus slots with Shore Power available in each.

### VENUE PERSONNEL AND STAGE LABOR

1. **Personnel Expense:** All presenters reimburse the Cobb Energy Performing Arts Centre for all personnel expenses related to their event in the John A. Williams Theatre. Minimum calls for Cobb Energy Centre Stage Personnel are 4 hours per call. Load-in, Show-call, and Load-out are considered separate calls. The Technical Director will inform us of these rates and the time for confirming details for the show.
2. **Overtime:** Personnel will be billed at time and a half of the prevailing rate after 8 hours in a day; time-and-a-half for all hours worked over 40 regular rate hours per week; time and a half for all hours between 12:00am(midnight) and 8:00am and double time for approved Cobb Energy Performing Arts Centre holidays. All hours worked on Sunday will be time and a half.
3. **List of Holidays:**

New Years Day	Labor Day
MLK Day	Thanksgiving Day
Good Friday	Day After Thanksgiving
Memorial Day	Christmas Eve
4 <sup>th</sup> of July	Christmas Day





## Fire Safety Policies

- All Pyrotechnic, Radiation (Laser), and other potentially dangerous effects must be approved in advance by Cobb Energy Performing Arts Centre. The Production Manager or representative must be in attendance during the Fire Marshal's inspection and permit approval. It is the responsibility of the presenter to secure all applicable permits and schedule the inspection with the Fire Marshal's office and Production Manager.
- Any pyro requests **must be submitted to the probate court no later than 10 business days before the event**, any later and pyro will not be approved for use by the Fire Marshal Office.
- **Liability for these effects is solely the presenter's responsibility.**
  - o This includes Cold Spark Machines as referred to by Cobb County Fire Code:  
**3.3.40 Pyrotechnic Device**  
Any Device containing pyrotechnic material or pyrotechnic effect simulation equipment and capable of producing a special effect as defined in this standard.  
**3.3.41 Pyrotechnic Effect Simulation Equipment**  
Equipment that uses a chemical mixture, heat source, and the introduction of oxygen to initiate or maintain combustion and is used to produce visible or audible effects by combustion, deflagration, or detonation.  
**3.3.42 Pyrotechnic Material (Pyrotechnic Special Effects Material)**  
A chemical mixture that contains sufficient oxygen or oxidizing agent required to initiate or maintain combustion and is used in the entertainment industry to produce visible or audible effects by combustion, deflagration, or detonation. (Such a chemical mixture consists predominantly of solids capable of producing a controlled, self-sustaining, and self-contained exothermic chemical reaction that results in heat, gas, sound, light or a combination of these effects. The chemical reaction functions without external oxygen.)
- The use of Theatrical Haze and Fog must be cleared by the venue's Production Manager prior to the date of the show. These effects necessitate bypass of smoke detectors and require Fire Marshal supervision. Haze MAY NOT be used until the Cobb Energy Production team has had the fire suppression system put into test mode.
- Fire Watch is billed at the prevailing rate. A 5-hour minimum will be included in pre-settlement and can be discussed at time of settlement.

Cobb County Fire Marshal's Office

Mike Medley

[michael.medley@cobbcounty.org](mailto:michael.medley@cobbcounty.org)

[www.cobbfmo.org](http://www.cobbfmo.org)



## Sound System Information Packet





## Sound System Information Packet

Quantity	Make & Model	FOH SYSTEM
24	Meyer Mica	L/R Line Arrays (12x Per Side)
2	Meyer 600 HP	Dual 15 Sub (1x per Side on top of Array)
2	Meyer CQ1	Center Cluster
4	Meyer CQ2	Center Cluster
2	Meyer 700 HP	Dual 18 Sub
4	Meyer M1D	Front Fills
8	Meyer MM4	Stage Lip Built in Front Fill
DELAY SYSTEM		
4	Meyer Mica	L/R Delay Fill (2x Per Side)
14	Meyer M1D	Balcony Under-Fill
2	Meyer UPM-2P	Far Left & Right Upper Grand Tier Delays
4	Meyer UPA-1P	Center & Inner Left & Right Upper Grand Tier Delays
2	Meyer UPM-2P	Proscenium Down-Fill
MONITORS AND NON FIXED SPEAKERS		
2	Meyer UPA-1P	Stage Monitor or Additional Front Fills
12	Community XLT-48E	Non-BiAmped Stage Monitors
2	Meyer CQ2	Side Fill Top
6	DB Technologies FMX 12	Powered Low Profile Stage Monitor
1	DB Technologies Sub 615	Drum Sub

FOH Equipment		
Quantity	Make & Model	Use
1	Yamaha CL5	64 Channel Digital Console
1	Yamaha QL5	64 Channel Digital Console
1	Yamaha PM5D (non RH)	48 Channel Digital Console
2	Yamaha 3212 Rio	Stage Box for Yamaha Console
2	Galileo 616 Processor	Meyer DSP
1	Q-SYS 110f Core	House Audio/Video Distribution
1	Apple Mini Mac	House music and QLAB

## Sound System Information Packet

Microphones		
Quantity	Wired	Use
10	Shure B58	
4	Shure B98	
2	Shure SM81	
1	EV RE20	
10	Shure SM58	
5	Shure SM57	
2	Shure B52	
2	AKG 414	
2	AKG 451	
2	Sennheiser 421	
6	Crown PPC160	
	WIRELESS	
2	Shure ULX-D4Q	Rack Unit
8	Shure SM58 ULXD2	Handheld
8	Shure ULXD1	Body Pack
4	DPA d:fine Headsets	Headset Mic
4	Sennheiser MKE-2	Lavalier

Snake Run Lengths	
	Distance
Down Stage L&R to Orchestra Pit	
Orchestra Pit to Mid House Mix	60'
Mid House Mix to Sound Booth (Broadway mix)	100'
Sound Booth to Lighting Booth	100'
Loading Dock to Stage	50'
	80'

Sound Isolated Power	
Amps	Location
200 amp (Cam-lock)	Down Stage Left Wall
200 amp (Cam-lock)	Up Stage Right Wall
20 amp (Edison)	At all mix positions and stage walls



### **Other Systems and Information**

- Production Intercom - House Intercom system is Clear-Com
  - Four channels are available in production locations and backstage areas.
  - Single and dual belt packs are available.
  - House Clear-Com is Wired Only, No Wireless is available.
- Backstage Program and Paging
  - Theatre program feed and road paging is patchable.
  - Stage Manager paging plates are located stage left, stage right, and stage manager's office.
- Lobbies
  - Theatre program can be sent to lobbies.

### **• Information and Policies:**

- The house has no decibel limitations but retains the right to ensure the protection of house equipment.
- Theatre has an unoccupied average reverb time of 1.5 seconds.
  - Acoustical curtains are located on rear wall, side walls, and proscenium wall of theatre. Curtains are fully adjustable and on average give a 1 second difference on reverb times.
- Our typical FOH patch is Left, Right, Front Fill and Subwoofer
  - Delay, Backstage, Lobby, and ALS feeds are summed from Left/Right
  - ALS Feed through Sennheiser Mobile Connect
- No cables or snakes are allowed to be run through audience areas. Eight-inch PVC conduits and wall pass-through holes are available for cable paths.
- 250ft Snake is recommended for FOH splits.
- **A split snake and power distro are not available in house.**
- **Supplemental sub-woofers for the deck are recommended for concerts.**  
Local rental company information available upon request.



# Lighting System Information Packet

## Lighting Positions Available:

Mid Catwalk, Near Catwalk, Grand Tier Rail, Mezzanine Rail, 5 Box Rails SL and SR, Tech Gallery SL and SR, Proscenium Ladder SL and SR, and stage. These positions are equipped with 3pin stage pin and/or 6 circuit Socapex connectors.

Fixture Inventory Available other than Rep Plot		
Quantity	Make	Model
24	ETC Source 4	5-degree barrel
3	ETC Source 4	10-degree barrel
28	ETC Source 4	19-degree barrel
33	ETC Source 4	26-degree barrel
33	ETC Source 4	36-degree barrel
6	ETC Source 4	50-degree barrel
106	ETC Source 4	Source 4 Bodies with 750 watt lamp
28	Selecon Arena	8" Fresnel with 2.2k watt lamp
20	ETC Source 4	PAR with 750 watt lamp (VNSP, NSP, MFL, WFL)
10	L&E	MR16 6' strips with 75 watt lamp
12	HUI	3 Cell Groundrow Cyc Unit 1kW
4	Lycian	1293 X3K Long Throw Spot Lights
8	Chauvet	Rogue R2X Moving Wash

Onstage Rep Plot consists of:		
Quantity	Make	Model
25	ETC Source 4	26-degree with 750 watt lamp
30	ETC Source 4	36-degree with 750 watt lamp
100	ETC Source 4	PAR with 750 watt lamp
12	HUI	3 Cell Cyc Unit 1kW

FOH Rep Plot consists of:		
Quantity	Make	Model
2	ETC Source 4	5-degree with 750 watt lamp
58	ETC Source 4	10-degree with 750 watt lamp
71	ETC Source 4	19-degree with 750 watt lamp
69	ETC Source 4	26-degree with 750 watt lamp
2	Selecon Arena	8" Fresnel with 2.2k watt lamp

Light Control Inventory		
Quantity	Make	Model
1	ETC	ION Light Board w/40-fader wing
728	Strand	2.4k Dimmers
16	Strand	6k Dimmers
1	ETC	Fixed DMX 2-Port Gateway (on SL Jump)
3	ETC	Portable DMX 2-Port Gateways with Ethernet connector
1	ETC	Paradigm system for House/Work Light Control

Company Switches / Disconnects		
Quantity	Location	Type
1	Grid	200-amp 3-phase 120/208-volt Bus Duct with a 60 amp and 100 amp disconnect
1	Forestage Grid	200-amp 3-phase 120/208-volt
4	Mid Gallery, Stage-Left	400-amp 3-phase 120/208-volt
1	Stage, Down-left	200-amp 3-phase 120/208-volt, isolated audio ground
1	Stage, Up-left	400-amp 3-phase 120/208-volt
1	Stage, Up-left	200-amp 3-phase 120/208-volt
1	Stage, Up-right	200-amp 3-phase 120/208-volt, isolated audio ground
2	Loading Dock	200-amp 3-phase 120/208-volt
1	Trap Room	200-amp 3-phase 120/208-volt

Cable		
Quantity	Type	Length
24	20A Stage Pin	5'
46	20A Stage Pin	10'
22	20A Stage Pin	25'
25	20A Stage Pin	50'
12	20A Stage Pin	100'
29	20A Stage Pin 2-fer	2'
25	6-Circuit Socapex	100'
20	Socapex to Stage Pin Breakout	1' to 6' staggered
2	Socapex to Edison Breakout	6'
8	60A Stage Pin	25'
3	60A Stage Pin	50'



## Lighting System Information Packet

Cable Turnarounds		
Quantity	Type	Orientation
2	5-Pin DMX	Female - Female
17	5-Pin DMX	Male - Male
3	DMX	3-Pin Female to 5-Pin Male
4	DMX	5-Pin Female to 3-Pin Male
6	DMX	3-Pin Female to 5-Pin Female
18	Power	Edison M to Stage Pin F
25	Power	Edison F to Stage Pin M

# Channel Magic Sheet

## Onstage

### RED (R26)

DSL			DSR
<b>1E</b>	31 (361)	32 (368)	33 (373)
<b>2E</b>	34 (385)	35 (392)	36 (402)
<b>3E</b>	37 (409)	38 (416)	39 (421)
<b>4E</b>	40 (433)	41 (440)	42 (445)
<b>5E</b>	43 (457)	44 (464)	45 (469)

### BLUE (R80)

DSL			DSR
<b>1E</b>	51 (362)	52 (367)	53 (374)
<b>2E</b>	54 (384)	55 (391)	56 (396)
<b>3E</b>	57 (408)	58 (415)	59 (420)
<b>4E</b>	60 (432)	61 (439)	62 (444)
<b>5E</b>	63 (456)	64 (463)	65 (468)

### Warm Hi-Sides (R318)

SL	SR
<b>1E</b> 111 (355)	112 (377)
<b>2E</b> 113 (379)	114 (401)
<b>3E</b> 115 (403)	116 (425)
<b>4E</b> 117 (427)	118 (449)
<b>5E</b> 119 (451)	120 (473)

### Cool Hi-Sides (L201)

SL	SR
<b>1E</b> 121 (357)	122 (375)
<b>2E</b> 123 (381)	124 (399)
<b>3E</b> 125 (405)	126 (423)
<b>4E</b> 127 (429)	128 (447)
<b>5E</b> 129 (453)	130 (471)

### GOBO Hi-Sides (Rosco 77785)



SL	SR
<b>1E</b> 131 (356)	132 (376)
<b>2E</b> 133 (380)	134 (400)
<b>3E</b> 135 (404)	136 (424)
<b>4E</b> 137 (428)	138 (448)
<b>5E</b> 139 (452)	140 (472)

### AMBER (R21)

DSL			DSR
<b>1E</b>	71 (359)	72 (365)	73 (371)
<b>2E</b>	74 (383)	75 (389)	76 (395)
<b>3E</b>	77 (407)	78 (413)	79 (419)
<b>4E</b>	80 (431)	81 (437)	82 (443)
<b>5E</b>	83 (455)	84 (461)	85 (467)

### LIGHT BLUE (R65)

DSL			DSR
<b>1E</b>	91 (358)	92 (364)	93 (370)
<b>2E</b>	94 (382)	95 (388)	96 (394)
<b>3E</b>	97 (406)	98 (412)	99 (418)
<b>4E</b>	100 (430)	101 (436)	102 (442)
<b>5E</b>	103 (454)	104 (460)	105 (466)

### Overhead Specials

SL					SR
<b>1E</b>	171 (360)	172 (363)	173 (366)	174 (369)	175 (372)
<b>2E</b>	176 (386)	177 (387)	178 (390)	179 (393)	180 (398)
<b>3E</b>	181 (410)	182 (411)	183 (414)	184 (417)	185 (422)
<b>4E</b>	186 (434)	187 (435)	188 (438)	189 (441)	190 (446)
<b>5E</b>	191 (458)	192 (459)	193 (462)	194 (465)	195 (470)

### CYC

	SL				SR
<b>Red</b>	141 (475)	142 (478)	143 (481)	144 (484)	145 (487) 146 (490)
<b>Green</b>	151 (476)	152 (479)	153 (482)	154 (485)	155 (488) 156 (491)
<b>Blue</b>	161 (477)	162 (480)	163 (483)	164 (486)	165 (489) 166 (492)

# Channel Magic Sheet

## Front of House

Torms										Box 1 High				Box 2 High				Box 3 High				Box 1 Low				Box 2 Low			
HL					HR					HL	HR	HL	HR	HL	HR	HL	HR	HL	HR	HL	HR	HL	HR						
Hi	201	202	203	204	Hi	221	222	223	224	351	341	371	361	391	381	311	301	331	321										
	(115)	(116)	(117)	(118)		(133)	(134)	(135)	(136)	(216)	(234)	(222)	(240)	(283)	(301)	(156)	(174)	(162)	(180)										
Mid	205	206	207	208	Mid	225	226	227	228	352	342	372	362	392	382	312	302	332	322										
	(119)	(120)	(149)	(150)		(137)	(138)	(139)	(140)	(215)	(233)	(221)	(239)	(284)	(302)	(155)	(173)	(161)	(179)										
Low	209	210	211	212	Low	229	230	231	232	353	343	373	363	393	383	313	303	333	323										
	(145)	(146)	(147)	(148)		(141)	(142)	(143)	(144)	(214)	(232)	(220)	(238)	(285)	(303)	(154)	(172)	(160)	(178)										
										354	344	374	364	394	384	314	304	334	324										
										(213)	(231)	(219)	(237)	(286)	(304)	(153)	(171)	(159)	(177)										
										355	345	375	365	395	385	315	305	335	325										
										(212)	(230)	(218)	(236)	(287)	(305)	(152)	(170)	(158)	(176)										
										356	346	376	366	396	386	316	306	336	326										
										(211)	(229)	(217)	(235)	(288)	(306)	(151)	(169)	(157)	(175)										

Grand Tier Front Wash										Curtain Warmers				
HL					HR					HL	HR			
Cool:	451	452	453	454	455	456						502	501	
	(255)	(247)	(250)	(260)	(263)	(267)						(193)	(204)	
N/C:	461	462	463	464	465	466								
	(256)	(248)	(251)	(259)	(262)	(266)								
Warm:	471	472	473	474	475									
	(258)	(249)	(252)	(261)	(264)									
Grand Tier Specials														
HL						HR								
10°:	431	432	433	434	435	436								
	(268)	(242)	(241)	(227)	(228)	(254)								
5°:	441	442												
	(257)	(265)												

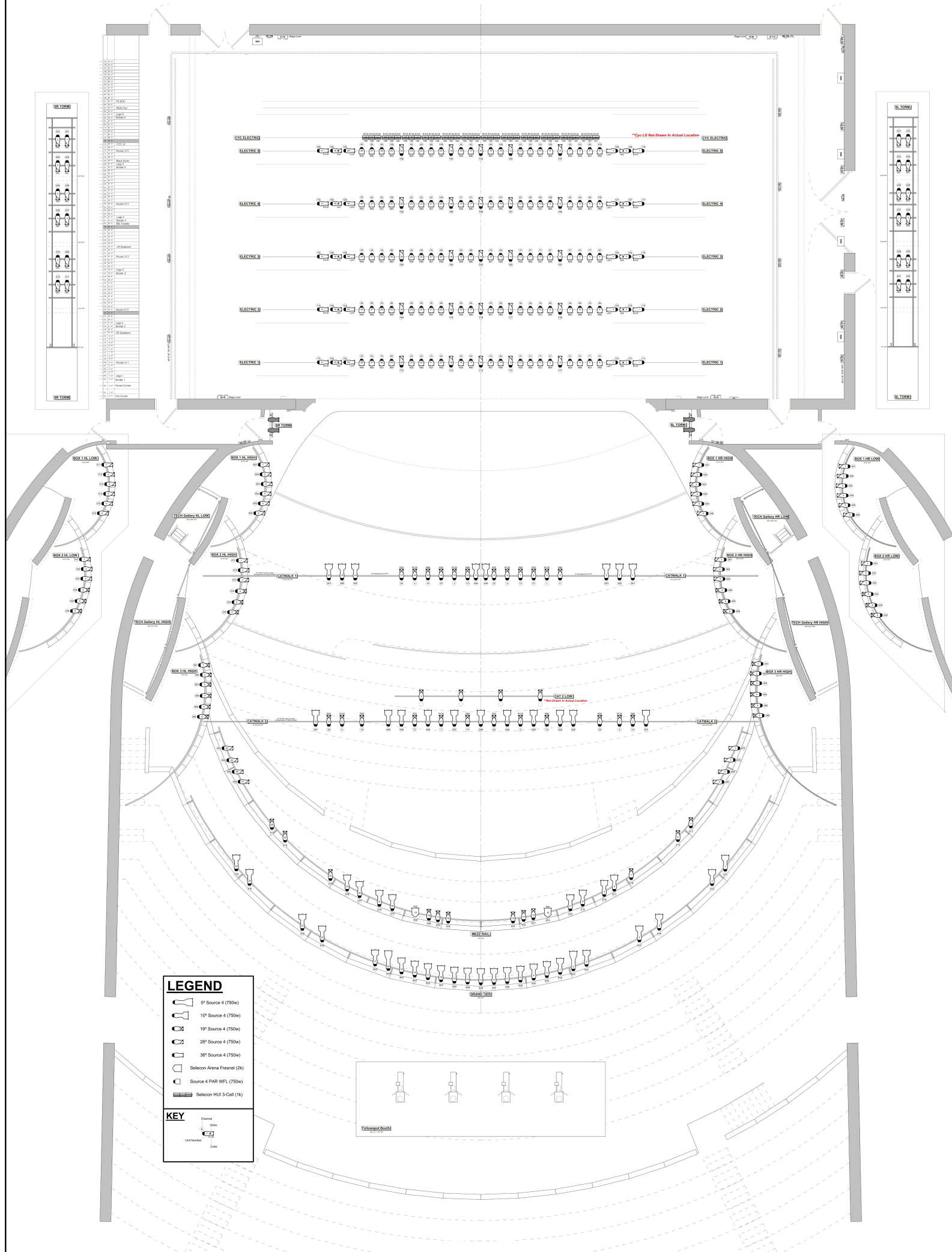
Catwalk #2											
Blue (R60)				No Color (N/C)				Pink (R33)			
15	16	17	18	5	6	7	8	25	26	27	28
(690)	(700)	(708)	(721)	(682)	(698)	(704)	(720)	(681)	(694)	(702)	(719)
(178)	(188)	(196)	(209)	(170)	(186)	(192)	(208)	(169)	(182)	(190)	(207)
Catwalk Specials (10°)											
251	252	253	254	255	256	257	258	259	260	261	
(680)	(692)	(693)	(697)	(699)	(701)	(703)	(707)	(709)	(710)	(722)	
(168)	(180)	(181)	(185)	(187)	(189)	(191)	(195)	(197)	(198)	(210)	

Only Catwalks are in Univ. 2.  
(Top Dimmer) ETC Network  
(Bottom Dimmer) Univ. 2/

Lower Mezzanine										Catwalk #1									
HL					HR					HL					HR				
10°:	271	272	273	274		275	276	277	278										
	(189)	(190)	(191)	(192)		(205)	(206)	(207)	(208)										
19°:	411	412	413		421	422	423	424	425	426		414	415	416					
	(164)	(163)	(188)		(194)	(195)	(196)	(201)	(202)	(203)		(209)	(181)	(182)					
26°:	401	402	403	404		405	406	407	408										
	(168)	(167)	(166)	(165)		(183)	(184)	(185)	(186)										

Catwalk #1							
Specials:							
241	242	243	244	245	246	247	
(628)	(629)	(630)	(649)	(677)	(668)	(699)	
(116)	(117)	(118)	(137)	(165)	(156)	(157)	

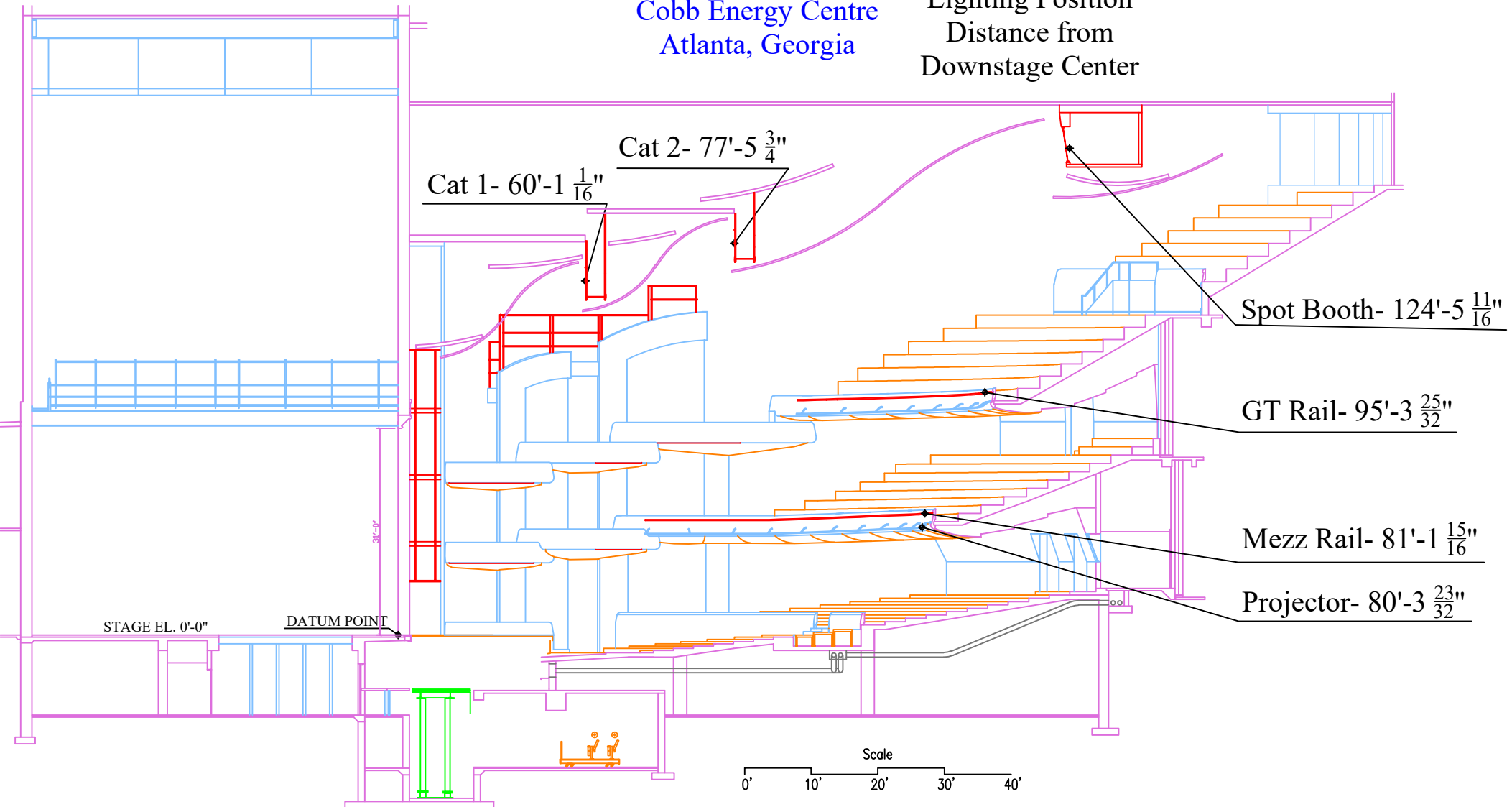
**Only Catwalks are in Univ. 2.**  
(Top Dimmer) ETC Network  
(Bottom Dimmer) Univ. 2/





Cobb Energy Centre  
Atlanta, Georgia

Lighting Position  
Distance from  
Downstage Center



# Cobb Energy Performing Arts Center - Rep Lineset Schedule

Show: 2023

Update

Date:

6/20/2023

Line Set	Dist fr PL	House Rep Hang	Show Hang	Trim	Weight	Notes
FC	5"	Fire Curtain				
1	1'					
2	2'	House Curtain			1300	motorized guillotine / manual travel
3	3'	#1 Border		21'	100	
4	3'-6"	#1 Legs			100	40' Opening
5	4'		Black Scrim			
6	4'-6"					
7	5'					
8	5'-6"	#1 Elec		24'	580	
9	6'					
10	6'-6"					
11	7'					
12	7'-6"					
13	8'					
14	8'-6"					
15	9'					
16	9'-6"		DS Speakers			
17	10'	DS Speakers			80	
18	10'-6"					
19	11'	#2 Border		21'	100	
20	11'-6"	#2 Legs	#2 Border		100	40' Opening
21	12'					
22	12'-6"		#2 Legs			
23	13'	HANGER	Steel support for Grid Iron			NO LINESET AVAILABLE
24	13'-6"	#2 Elec		24'	580	
25	14'					
26	14'-6"					
27	15'					
28	15'-6"					
29	16'					
30	16'-6"		#3 Border			
31	17'					
32	17'-6"					
33	18'					
34	18'-6"					
35	19'	#3 Border		21'	100	
36	19'-6"	#3 Legs			100	40' Opening
37	20'					
38	20'-6"					
39	21'					
40	21'-6"	#3 Elec		24'	580	
41	22'		#3 Legs			
42	22'-6"					
43	23'		#4 Border		80	
44	23'-6"					
45	24'	US Speakers				
46	24'-6"					
47	25'					
48	25'-6"					

# Cobb Energy Performing Arts Center - Rep Lineset Schedule

Show: 2023

Update

Date:

6/20/2023

Line Set	Dist fr PL	House Rep Hang	Show Hang	Trim	Weight	Notes
49	26'	HANGER	Steel support for Grid Iron			NO LINESET AVAILABLE
50	26'-6"	MS Traveler			580	
51	27'	#4 Border		21'	100	
52	27'-6"	#4 Legs			100	40' Opening
53	28'	Projection Screen				
54	28'-6"					
55	29'					
56	29'-6"	#4 Elec		24'	580	
57	30'					
58	30'-6"					
59	31'					
60	31'-6"					
61	32'					
62	32'-6"					
63	33'					
64	33'-6"					
65	34'		#5 Border			
66	34'-6"					
67	35'	#5 Border	#4 Legs	21'	100	
68	35'-6"	#5 Legs			100	40' Opening
69	36'	Black Scrim				
70	36'-6"					
71	37'					
72	37'-6"	#5 Elec		24'	580	
73	38'					
74	38'-6"	Cyc Elec	#5 Legs	24'	460	
75	39'	HANGER	Steel support for Grid Iron			NO LINESET AVAILABLE
76	39'-6"					
77	40'					
78	40'-6"					
79	41'					
80	41'-6"					
81	42'					
82	42'-6"	#6 Border		21'	100	
83	43'	#6 Legs	BOD		100	40' Opening
84	43'-6"					
85	44'	Cyc	Cyc LX		160	
86	44'-6"					
87	45'	FS BOD			360	
88	45'-6"					
89	46'		RP			
90	46'-6"					
91	47'					
92	47'-6"		Cyc			
93	48'					
94	48'-6"		#6 Legs			
95	49'					
96	49'-6"					
97	50'					
98	50'-6"					
99	51'					
RW	55'		NO LINESET AVAILABLE			NO LINESET AVAILABLE

Batten Type: 1.5" id Sch 40 Truss Batten

Batten Length: 66'

Out Trim: 79'

In Trim: 4'

Arbor Capacity: 2,100#

Rev: 2013/07/16

All Linsets US of House Curtain can be stripped

Border Dim: 15'h x 66'w

Leg Dim: 30'h x 14'w

Proscenium Opening: 31'h x 50'w

40,000# of Counterweight

SL TRUSS

2 TABS

TRAP ROOM

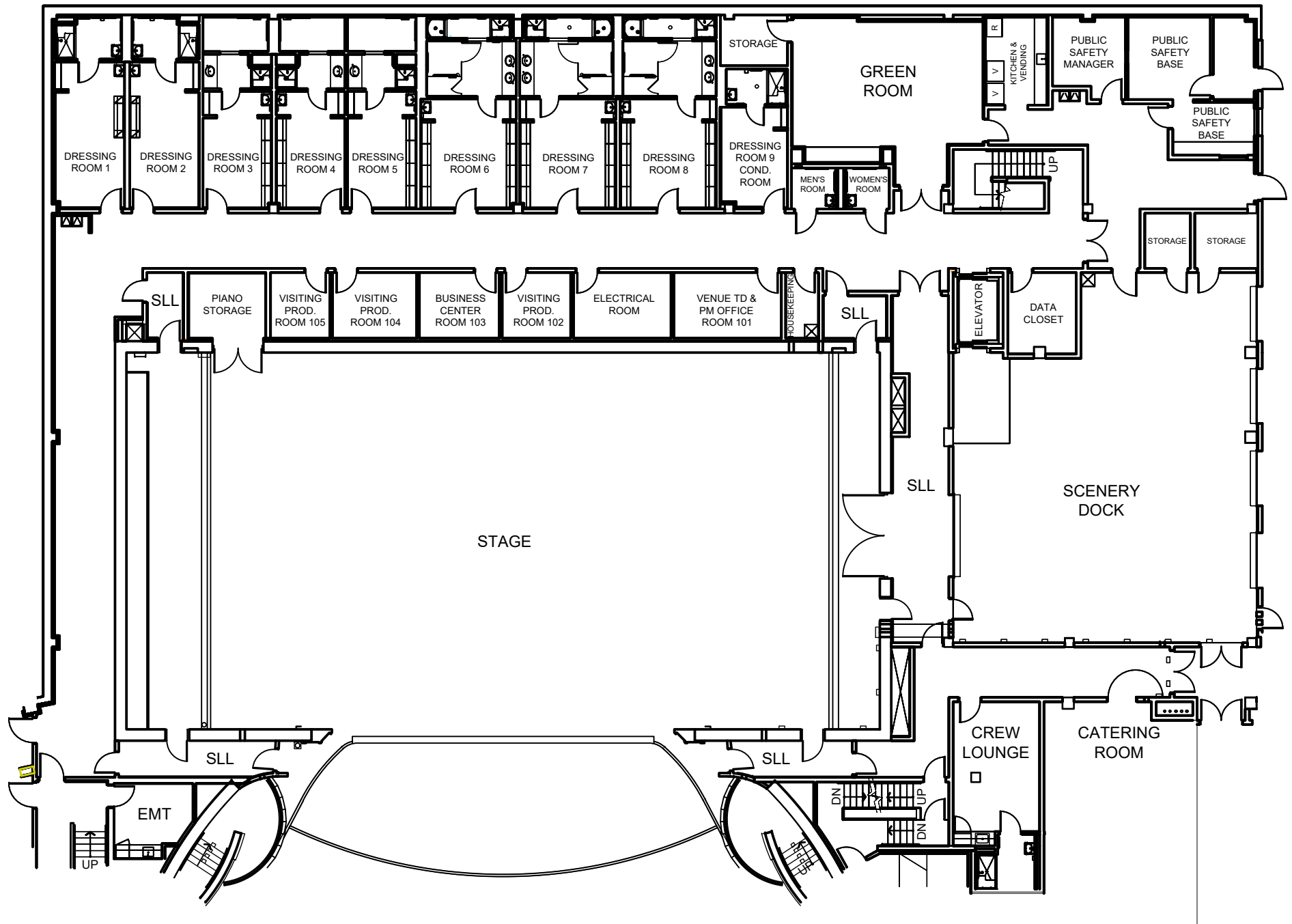
1 BORDER

SR TRUSS

BLACK SCRIM

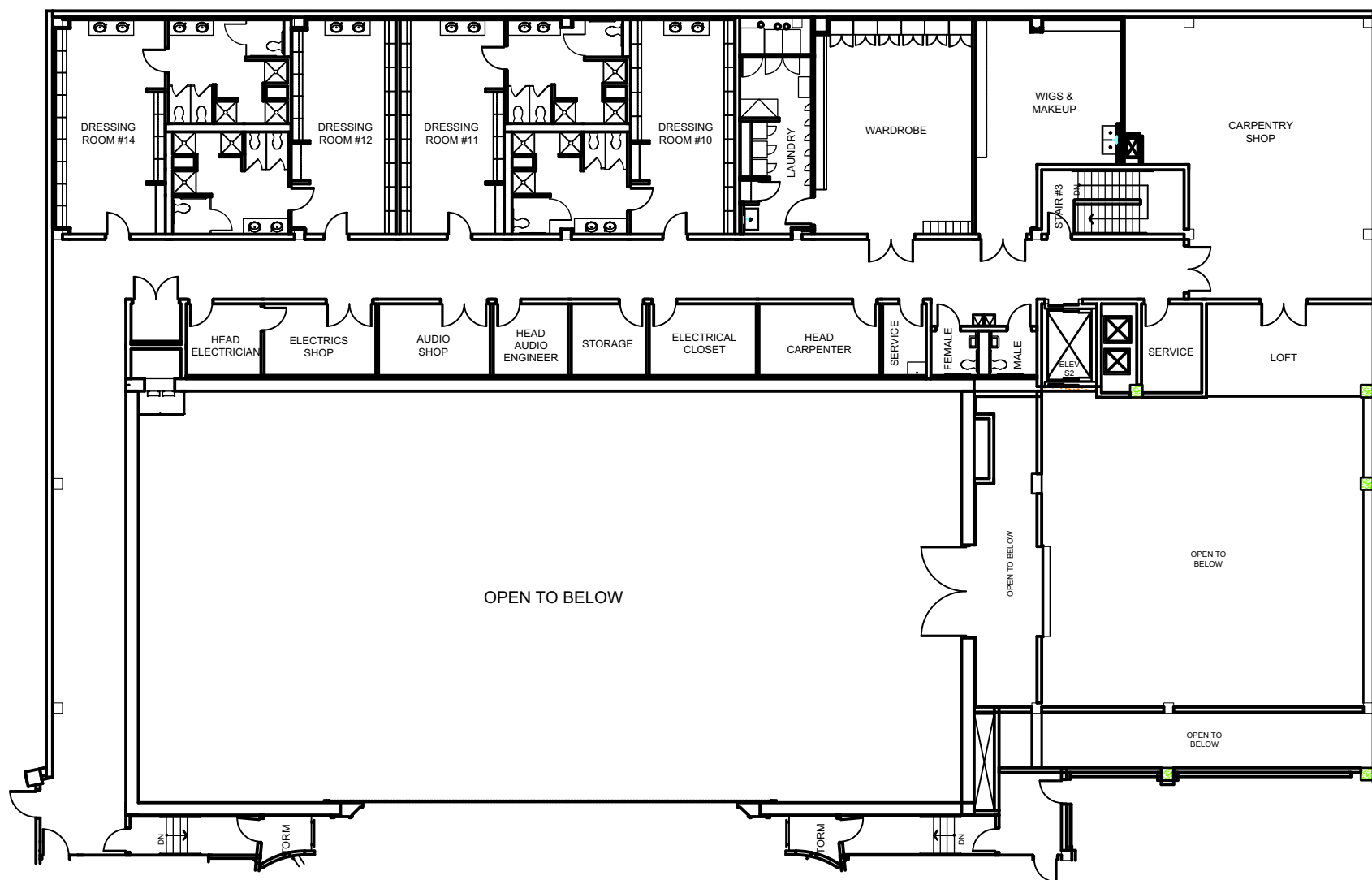


## **General Backstage Drawings**

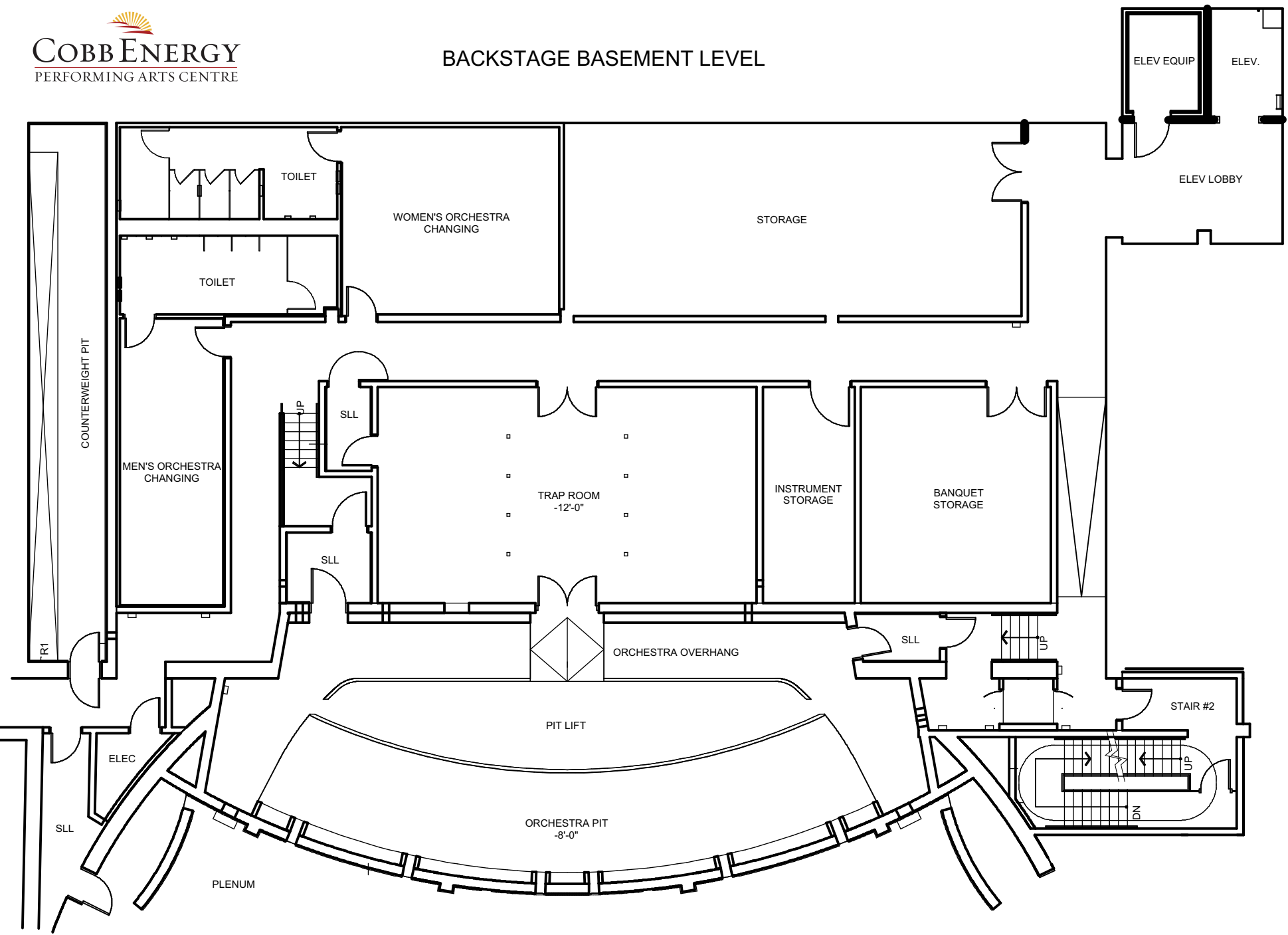


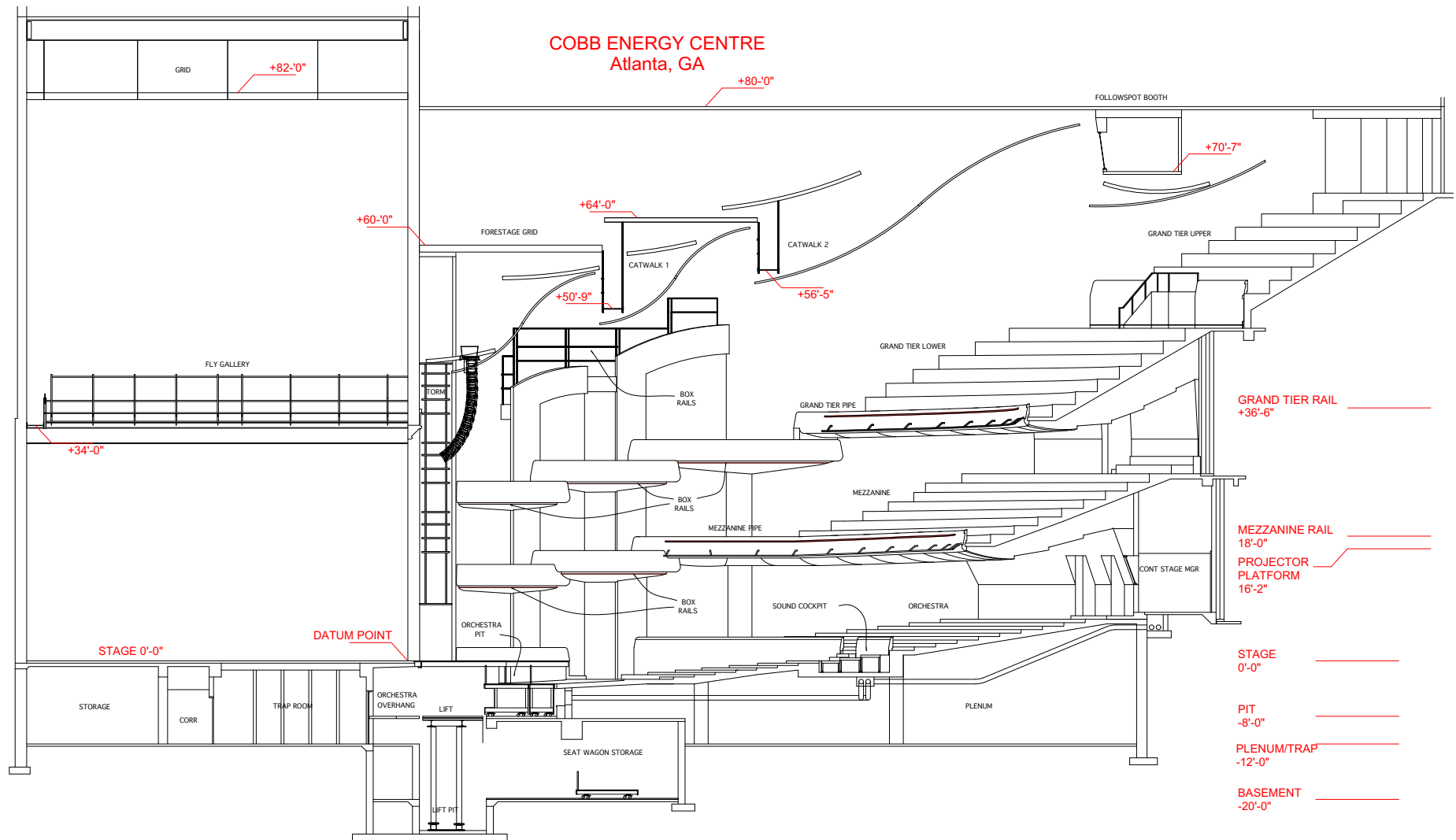
1st Floor Dressing Rooms



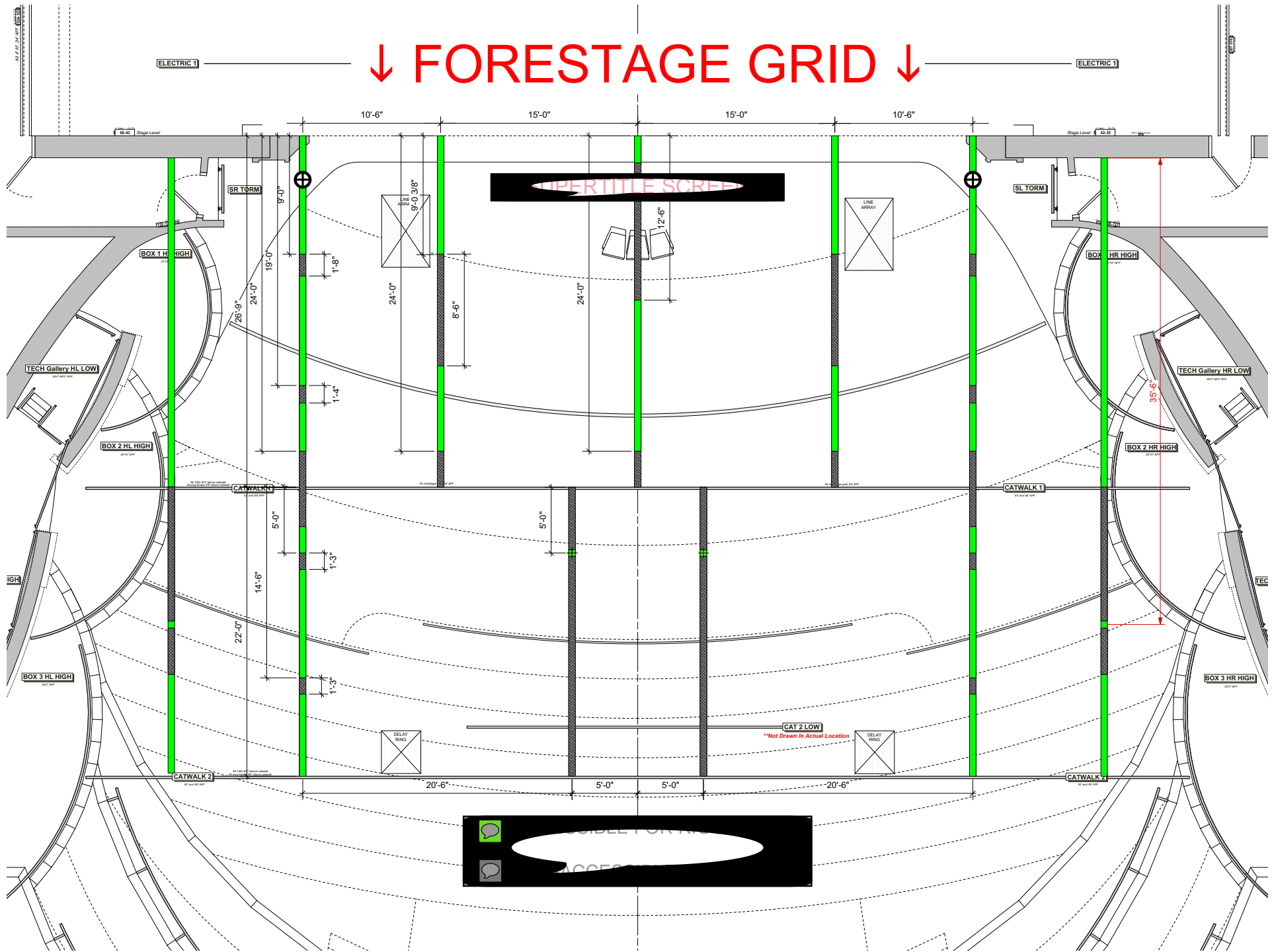


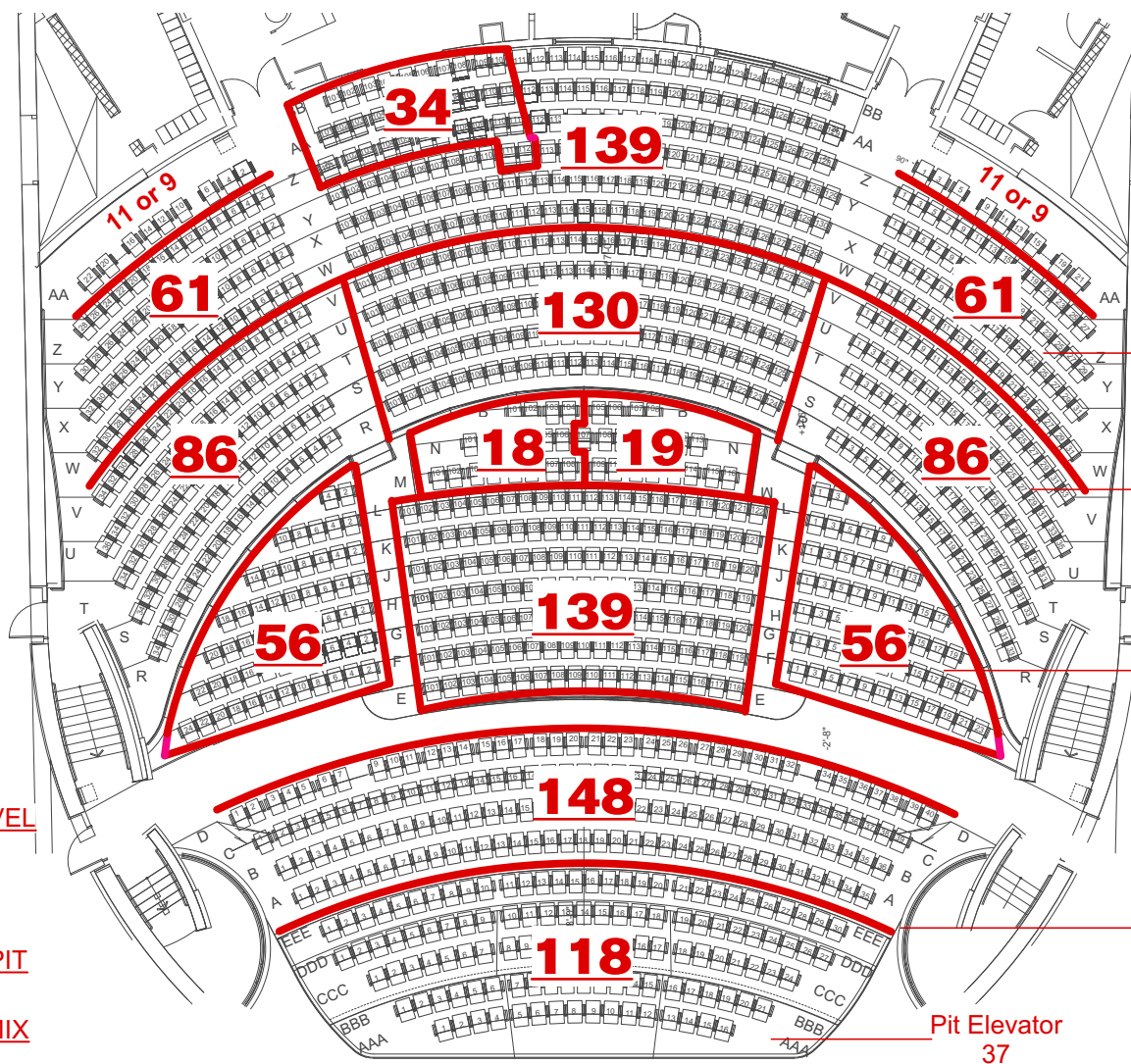
BACKSTAGE BASEMENT LEVEL





# ↓ FORESTAGE GRID ↓





TOTAL: 295

TOTAL: 302

TOTAL w/Half Mix: 270  
TOTAL w/Full Mix: 251  
TOTAL w/ NO Mix: 288

TOTAL  
266

Pit Elevator  
37

TOTAL ORCHESTRA LEVEL  
1173

TOTAL with FULL PIT  
1054

TOTAL with BROADWAY PIT  
1135

TOTAL with BROADWAY MIX  
1138

TOTAL with Full Mix  
1135

TOTAL with Half Mix  
1154

TOTAL BOX SEATS: 56

TOTAL SEATING CAPACITY: 2756

COBB ENERGY CENTRE  
ORCHESTRA LEVEL  
SCALING MAP





