



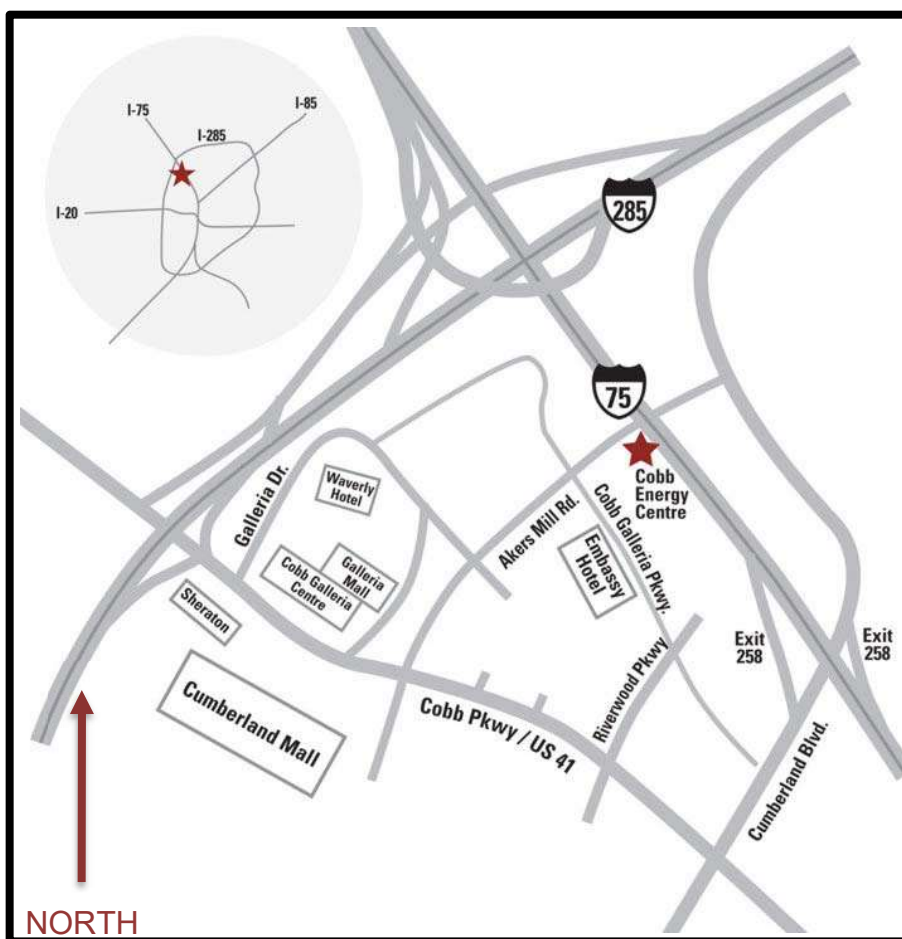
# COBB ENERGY

---

## PERFORMING ARTS CENTRE

# TECHNICAL PACKAGE

Updated 05/01/2020



770.916.2800  
2800 Cobb Galleria Parkway  
Atlanta, GA 30339  
[www.cobbenergycentre.com](http://www.cobbenergycentre.com)



# COBB ENERGY

PERFORMING ARTS CENTRE

## DOCK MAP

2800 Cobb Galleria Parkway  
Atlanta, GA 30339

< I-75 Northbound  
I-75 Southbound >

Marshalling Yard

Parking Lot

Access Road

Parking Deck

LOADING DOCK

THEATRE

Akers Mill Rd.

Cobb Galleria Pkwy





**COBB ENERGY**  
PERFORMING ARTS CENTRE

**Important information for the successful execution of your event**

The Cobb Energy Performing Arts Centre staff would like to offer you their assistance in making your event a success. In order to help with this process, we ask that you contact our Production Staff at least two weeks prior to your first day at CEPAC and earlier if your situation allows.

These are some important questions that we need answered prior to your arrival:

- *A schedule of your day's or week's events:* i.e. what time is: load-in, meals, rehearsals, sound check, meet and greet, work calls, performances (start and end), intermission, load-out, etc.
- *What outside vendors will be providing outside support:* if you plan on bringing in outside equipment to supplement our in-house gear then it is important that we know who will be supplying the equipment, what size and how many trucks will be making deliveries.
- *Will you be rigging any equipment any where other than over stage or using our fly system?* i.e. Front-of-house truss or audio points, banners, screens, etc.
- *Do you need our Orchestra pit?* Our pit is configurable in two sizes; a Broadway size pit and a full-sized Orchestra pit. See Tech Packet for further information.
- *What are your labor needs?* Cobb Energy Performing Arts Centre is a "Promoter's Choice" venue. In addition to our three house crew (Head Electrician, Head Audio Engineer, and Head Carpenter/Rigger) we have a small in-house crew that is available for your event. If we know in advance about labor needs we can arrange for our crew to work your event. Otherwise please reference the labor section in the tech packet for approved labor providers at Cobb Energy Performing Arts Centre.
- *Will you need any seats pulled in the house?* i.e. Rows M,N,P center of Orchestra section can be pulled for a mix/FOH position (kills 37 seats); we also have a Broadway perch that can be built directly in front of the audio booth (kills 34 seats); or other various locations in the house for a Jib/Crane or other cameras. Please consult with TD/PM for seating locations with the ability to be pulled. There is a \$35/chair fee for production requested seat pulls.
- Our staff will discuss the above questions with you or your production/technical staff and present a labor and in-house equipment estimate based on this information. We will do our best to make sure your event a success, but please understand that it is ultimately the client's responsibility to manage the day and final billing will be based on actual labor and equipment usage.
- **Mailing Address**  
Cobb Energy Performing Arts Centre  
C/O "Your Event and your name"  
2800 Cobb Galleria Pkwy  
Atlanta, GA 30339



## Seating and House Capacity

Orchestra Pit Lifts:	118
Orchestra Level:	1057 (Total capacity for Orchestra Level: 1175)
Mezzanine:	620
Grand Tier:	961
Total:	2756

Wheelchair and handicap access available on all levels. Assistive listening devices available upon request.

## Stage Dimensions

Proscenium Opening:	50' wide X 31' high
Stage Depth:	55'
Stage Width:	110'
Stage Height above Audience:	40"
Stage Height above Orchestra Pit:	8'
Apron Depth:	2'
Apron Depth w/Gala Lift:	11'
Orchestra Pit Depth (Broadway):	15'
Stage floor to trap room floor:	12'
Grid Height:	82'
Mid Gallery Height:	34'
Air Duct SL	24'
Lower Loading Gallery Height:	73'
Upper Loading Gallery Height:	82'

## Loading Doors

Dock Doors:	10'-6" high x 8' wide
Interior door to stage:	19'-6" high x 11'-9" wide
Dock Height:	47" (Standard Semi-trailer)

## Counterweight Fly System

Number of Line-sets:	95 (6" O.C.)
Line-set Construction:	1.5"od Truss Batten
Batten Length:	66'
Batten Out Trim:	79'
Batten In Trim:	4'
Arbor Capacity:	2100 #'s

## Rigging

Call for details



### **Soft Goods**

House Curtain: Eggplant 36'h x 66' wide motorized guillotine; manual travel

Border: Black 15'h x 66'w Qty 6

Legs: Black 30'h x 14'w Qty 6 sets

Tabs: Black 30'h x 20'w Qty 4

Cyc: White 30'h x 64'w Qty 1

Scrim: White and black 30'h x 64'w Qty 1 Each

Full Stage Blackout: Black 30'h x 32'w Qty 1 Set

### **Variable Acoustics**

The auditorium features acoustic curtains that can be stored or deployed over walls.

### **Projection**

One Digital Projection 21k M-Vision Laser Projector and 11'x20' Front or Rear Projection Screen are available for an additional rental fee of \$1,500. Projector can be placed on stage or on mezzanine platform 75' from stage.

### **Stage Floor**

The stage floor, in order of construction, includes a vapor barrier, sleepers on neoprene pads, 2 layers of 3/4" inch plywood, and is topped with 1/4" Masonite.

A black Marley dance floor is available. Approx. Dimension 60' wide x 38' deep

### **Orchestra Pit**

The Orchestra pit can be arranged as a Standard Broadway Pit accommodating approximately 14 people or a Full Pit accommodating approximately 60 people, comfortably. The Broadway Pit removes rows AAA and BBB from audience seating. The Full Pit removes rows AAA through EEE.

### **Orchestra Pit Accessories**

100 – Musicians Chairs

100 – Music Stands with stand lights

1 – Wenger Conductor's Podium

### **Loading Dock**

The dock can accommodate 4 trucks. Dock D is available for loading and unloading only.

Trucks may not be parked in Dock D for the duration of an event. Each door has a dock leveler.

The dock opens onto a Scenery Bay with access to Stage-Left.

There is a sound isolation door between the Scenery Bay and Stage-Left.



## **Staging**

Wenger Risers (carpeted) – All risers can be 8”, 16”, or 24” high

8 – 4’ x 8’

6 – 4’ x 6’

4 – 4’ x 4’

4 – 3’ x 3’

## **Other Equipment**

1 – Genie AWP 36’ Lift

Plexi-glass Lectern

Wooden Lectern

1 Supertitle LED Screen

## **Dressing Rooms**

Dressing rooms are located on all 3 backstage levels. All rooms are equipped with Clear Com Jacks, Paging, Program, and CATV connection. All rooms have ADA compatible restrooms and showers. The Orchestra changing rooms do not have showers.

### Stage Level

2 – 1 to 2 person – Star

3 – 2 to 4 person

3 – 4 to 8 person

### 2<sup>nd</sup> Floor

2 – 14 person

2 – 16 person

### Pit Level

Men’s Orchestra Changing

Women’s Orchestra Changing

## **Green Room**

The green room is located on the stage level and is equipped with video and audio monitors. This room can accommodate up to 30 people

## **Wardrobe**

There are separate Wardrobe and Wig/Makeup rooms on the 2<sup>nd</sup> Level. Each is equipped with a sink. The wardrobe room has 3 washers and 3 driers.

Please contact Production Manager or Technical Director for Head of Department Contact information. Head of Departments include Lighting, Sound and Carpenter/Fly.



**COBB ENERGY**  
PERFORMING ARTS CENTRE

Please contact Production Manager or Technical Director for Head of Department Contact information. Head of Departments include Lighting, Sound and Carpenter/Fly.

**Labor**

- A small in-house crew is available, please call for details.
- It is the presenter/promoter/producer's responsibility to arrange billing with outside labor companies.
- The staff of Cobb Energy Performing Arts Centre is available to provide assistance on labor needs.
- The Cobb Energy Performing Arts Centre has a small list of runners who may be contracted at \$200/day. The Centre does not rent vehicles for any reason, any rental vehicle must be procured and insured by the presenter/promoter/producer.

The following are approved labor companies:

**IATSE #927** (Stagehands)

Business Agent: Neil Gluckman  
420 McDonough Blvd SE Suite 106  
Atlanta, GA 30315  
404-870-9911  
iatse927@live.com  
www.iatse927.org

**Rhino Staging**

Contact: Emily Lumley  
8737 Dunwoody Place Suite 5  
Atlanta, Georgia 30350  
Office 770-835-5111  
www.rhinostaging.com

**IATSE #859** (Wardrobe)

Business Agent: Kelly Chipman  
1010 Lake Point Drive  
Watkinsville, GA 30677  
678-883-1456  
atlantalocal859@aol.com

**IATSE #798** (Hair & Makeup)

Business Agent: Melanie Steele  
512-468-8713  
Makeupmell@aol.com  
local798.net



## **Backstage Policies**

1. **Access:** All show personnel are required to sign in with security at the Stage Door and receive the CEPAC ID card valid for the time period that the performance has been booked. No activity will be allowed on the stage, grid, fly loft, loading galleries, pit, control booths, sound booths, dimmers rooms, amp rooms, or other technical support areas unless there are House stage crew present (See "Venue Personnel and Stage Labor")
2. **Alterations to Facility:** Building structure alterations of any kind are not permitted without the written approval of the Cobb Energy Performing Arts Centre Managing Director. Alterations include holes, traps, additional projection booths, and supports. The presenter, at the conclusion of the performance run, must restore any approved alterations to its original condition.
3. **Animals:** Only service animals or animals used in the performance are allowed in the building. The Technical Director must be notified about those animals before their arrival.
4. **Booths:** Audio transcription, follow spot, lighting and sound booths are for working personnel only. Due to the sensitive nature of the equipment, food, drink and smoking are not permitted in these areas. Contact the Cobb Energy Centre's Technical Director or any member of the house stage crew to gain access to the booths. These booths cannot be used for "dead case" storage. All empty cases must be stored backstage.
5. **Clearance of Hallways and Access Points:** At all times, aisles, hallways, doorways, and stairwells must remain clear of obstruction. Consult with the Cobb Energy Performing Arts Centre Technical Director.
6. **Damage:** Presenters are responsible for all damages to the facility and its equipment during the engagement.
7. **Dressing Rooms:** Dressing Rooms are cleaned daily, usually in the morning. If you would like an alternate cleaning schedule or if you do not want the dressing rooms cleaned, please inform the Technical Director, or the Director of Operations of your preferred cleaning schedule. Backstage halls, stairways and public spaces are also cleaned daily. Please let us know in advance of any special request regarding custodial services.
8. **Equipment:** All Cobb Energy Performing Arts Centre equipment shall be operated in a safe manner by technicians trained in the proper and safe handling of said equipment. Technicians who operate Cobb Energy Centre equipment in an unsafe or inappropriate manner will be asked to leave the facility and will not be allowed to work on future Cobb Energy Centre stage crews.
9. **Firearms:** Weapons of any kind are not permitted at the Cobb Energy Performing Arts Centre. Weapons used in a performance must be approved by the Technical Director and Public Safety Manager.
10. **Food and Drink:** No food or drink is allowed on the John A. Williams Theatre stage unless it is specifically used as part of a Theatrical Presentation. Bottled water will be allowed in a sealed container such as a travel cup or sports bottle. Food and drink is permitted at "Tech Table" locations provided it is removed prior to house opening for an audience. Trash receptacles are provided throughout the venue.
11. **Alcohol:** Due to the guidelines of the Theater liquor license, all alcohol purchased for consumption in the building must be purchased through the Cobb Energy Performing Arts Centre's Food & Beverage Department. They can be reached at 770.916.2806.
12. **Information (Technical Specifications):** Information packets are available from the Cobb Energy Centre Technical Director, which contains an inventory of equipment, curtains, and a description of the stage dimensions and other amenities.
13. **Load-in/Load-out:** No equipment or show related materials may be delivered before the (load-in) or first scheduled date unless prior approval has been granted by the Cobb Energy Performing Arts Centre Technical Director. All equipment and show related materials must be removed immediately after the final performance unless approval has been obtained from the Centre's Technical Director prior to load-out.
14. **Restore:** All Users of the John A. Williams Theatre are responsible for restoring the Theater and its equipment to the same location and condition in which the equipment was found, unless prior arrangements have been made with the Cobb Energy Performing Arts Centre Technical Director. A repair fee will be charged for any damage to the stage floor including lag bolts, screwed down flooring, etc.
15. **Safety:** It is the responsibility of everyone to ensure a safe work environment. The Cobb Energy Centre House Crew will not allow activity that they deem to be unsafe.
16. **Schedule:** It is the responsibility of the Presenter or his agent to provide the Cobb Energy Performing Arts Centre Technical Director the production schedule and other important show related information.
17. **Signage:** Absolutely NO nails, tacks, tape, or adhesive of any kind should be used on any surfaces of the theatre, lobbies, dressing rooms or other areas. Blue painter's masking tape is available upon request. Please





# COBB ENERGY

## PERFORMING ARTS CENTRE

contact the Technical Director before posting anything on the doors or walls. Nothing can be hung from chandeliers, sprinkler pipes or other fixtures of the theatre. No signs or decorations are allowed on the building exterior or sidewalk. Any outdoor décor or signage must be approved by the Managing Director or Director of Facility Operations.

18. **Furniture:** Please do not move any furniture in the lobbies or dressing rooms. If you need more space, additional furnishings or furniture relocated, please contact the Technical Director.
19. **Smoking:** Smoking and vaping are prohibited throughout the Cobb Energy Performing Arts Centre, except in those areas designated as a smoking and vaping area. Smoking and vaping ordinance requires that all smokers/vapers be at least 25' from an exterior entrance.
20. **Tools Usage:** All Cobb Energy Performing Arts Centre tools are available for use at the discretion of the Technical Director.
21. **Waiver Request:** Any waiver requests to the above rules should be addressed in writing to the Cobb Energy Performing Arts Centre Managing Director.
22. **Traffic:** Traffic officers are required for all performances over 1,000 guests. The CEPAC will make the final decision on how many traffic officers are needed for an event. Number of officers for traffic will not exceed 6 for any one performance. The cost for hiring the traffic officers is \$55.00/hour with a minimum of four hours reporting pay. This will be part of the final settlement.  
As a general rule, one security officer is required per 500 people. The CEPAC reserves the right to use our in-house security company and or designated security company in the interest of public safety and the safety of the CEPAC. The Public Safety Manager will determine the number of officers needed based on ticket sales and past history of the event. The CEPAC reserves the right to use CCSD in place of security if deemed necessary. The charge for CEPAC security is listed on the rental form.
23. **Emergency Medical Technician:** One EMT is required for all events in the theater. The charge for the service is \$40/hr. This will be part of the final settlement.
24. **Parking:** Parking is not permitted in the loading dock area unless previous arrangements have been made. The dock area is designated for loading and unloading only. If you are unloading items from your car, please do so and the move the car to one of the nearby parking lots. Loading dock parking includes 4 bus slots with Shore Power available in each.

### VENUE PERSONNEL AND STAGE LABOR

1. **Required Personnel:** All events or activities onstage require at least three (3) Cobb Energy Performing Arts Centre House Crew members. In the event of any items being flown, an additional House Crew member will be required. If any equipment such as the house curtain or electricians is needed; additional personnel may be required. Only Cobb Energy Performing Arts Centre personnel or an approved fully insured contractor are permitted to operate Cobb Energy Centre equipment.
2. **Personnel Expense:** All presenters reimburse the Cobb Energy Performing Arts Centre for all personnel expenses related to their event in the John A. Williams Theatre. Minimum calls for Cobb Energy Centre Stage Personnel are 4 hours per call. Load-in, Show-call, and Load-out are considered separate calls. The Technical Director will inform on these rates and the time of confirming details for the show.
3. **Overtime:** Personnel will be billed at time and a half of the prevailing rate after 8 hours in a day; time-and-a-half for all hours worked over 40 regular rate hours per week; time and a half for all hours between 12:00am(midnight) and 8:00am and double time for approved Cobb Energy Performing Arts Centre holidays. All hours worked on Sunday will be time and a half.
4. The Cobb Energy Performing Arts Centre Stage Personnel shall be given a 1-hour break after a minimum of three hours and maximum five hours worked.
5. **List of Holidays:**

New Years Day	Labor Day
MLK Day	Thanksgiving Day
Good Friday	Day After Thanksgiving
Memorial Day	Christmas Eve
4 <sup>th</sup> of July	Christmas Day



## **USE OF SINGLE MAST LIFT OR ANY AERIAL LIFT ON STAGE**

1. All lifts will be inspected prior to ensure
  - a. No visible leakage of oil, hydraulic fluid, etc
  - b. Battery if present in good condition
  - c. Tires/wheels in good condition
  - d. Platform in good condition
  - e. Safety rails are secure
  - f. Controls are operational
2. Ensure load limits are not exceeded
3. Ensure operating personnel DO NOT stand on railings
4. The Lift will be lowered to its lowest limit prior to moving unless it is designed to move while the platform is elevated.
5. A spotter will accompany the lift to advise of hazards on the ground
6. The lift will only be operated on level surfaces.
7. Any and All Show Crew requiring use of CEPAC equipment shall sign a waiver and release form before operation.

**The Above Best Practice applies to all CEPAC equipment and all client provided rental lifts.**



## Fire Safety Policies

- All Pyrotechnic, Radiation (Laser), and other potentially dangerous effects must be approved in advance by Cobb Energy Performing Arts Centre. The Technical Director or their designee must be in attendance during the Fire Marshal's inspection and permit approval. It is the responsibility of the presenter to secure all applicable permits and schedule the inspection with the Fire Marshal's office and Technical Director. Liability for these effects is solely the presenter's responsibility
  - o This includes Cold Spark Machines as referred to by Cobb County Fire Code:
    - 3.3.40 Pyrotechnic Device**  
Any Device containing pyrotechnic material or pyrotechnic effect simulation equipment and capable of producing a special effect as defined in this standard
    - 3.3.41 Pyrotechnic Effect Simulation Equipment**  
Equipment that uses a chemical mixture, heat source, and the introduction of oxygen to initiate or maintain combustion and is used to produce visible or audible effects by combustion, deflagration, or detonation
    - 3.3.42 Pyrotechnic Material (Pyrotechnic Special Effects Material)**  
A chemical mixture that contains sufficient oxygen or oxidizing agent required to initiate or maintain combustion and is used in the entertainment industry to produce visible or audible effects by combustion, deflagration, or detonation. (Such a chemical mixture consists predominantly of solids capable of producing a controlled, self-sustaining, and self-contained exothermic chemical reaction that results in heat, gas, sound, light or a combination of these effects. The chemical reaction functions without external oxygen.)
- Use of Theatrical Haze and Fog must be cleared with the venue's Technical Director prior to date of show. These effects necessitate bypass of smoke detectors and require Fire Marshal supervision.
- Fire Watch is billed at \$50/hr. A 5-hour minimum will be included on pre-settlement and can be discussed at time of settlement.

Cobb County Fire Marshal's Office

Matt Johnson

Ronaldmatthew.johnson@cobbcounty.ga

770-528-8175

www.cobbfmo.org

## Cobb Energy Performing Arts Center - Rep Lineset Schedule

Show: \_\_\_\_\_

Date: \_\_\_\_\_

Line Set	Dist fr PL	House Rep Hang	Show Hang	Trim	Weight	Notes
FC	5"	Fire Curtain				
1	1'					
2	2'	House Curtain			1300	motorized guillotine / manual travel
3	3'	#1 Border		21'	100	
4	3'-6"	#1 Legs			100	40' Opening
5	4'					
6	4'-6"					
7	5'					
8	5'-6"	#1 Elec		24'	580	
9	6'					
10	6'-6"					
11	7'					
12	7'-6"					
13	8'					
14	8'-6"					
15	9'					
16	9'-6"					
17	10'	DS Speakers			80	
18	10'-6"					
19	11'	#2 Border		21'	100	
20	11'-6"	#2 Legs			100	40' Opening
21	12'					
22	12'-6"					
23	13'	HANGER	Steel support for Grid Iron			<b>NO LINESSET AVAILABLE</b>
24	13'-6"	#2 Elec		24'	580	
25	14'					
26	14'-6"					
27	15'					
28	15'-6"					
29	16'					
30	16'-6"					
31	17'					
32	17'-6"					
33	18'					
34	18'-6"					
35	19'	#3 Border		21'	100	
36	19'-6"	#3 Legs			100	40' Opening
37	20'					
38	20'-6"					
39	21'					
40	21'-6"	#3 Elec		24'	580	
41	22'					
42	22'-6"					
43	23'	US Speakers			80	
44	23'-6"					
45	24'					
46	24'-6"					
47	25'					
48	25'-6"					

## Cobb Energy Performing Arts Center - Rep Lineset Schedule

Show:

Date:

Line Set	Dist fr PL	House Rep Hang	Show Hang	Trim	Weight	Notes
49	26'	HANGER	Steel support for Grid Iron			<b>NO LINESET AVAILABLE</b>
50	26'-6"	MS Traveler			580	
51	27'	#4 Border		21'	100	
52	27'-6"	#4 Legs			100	40' Opening
53	28'	Projection Screen			60	Storage Pipe for Screen
54	28'-6"					
55	29'					
56	29'-6"	#4 Elec		24'	580	
57	30'					
58	30'-6"					
59	31'					
60	31'-6"					
61	32'					
62	32'-6"					
63	33'					
64	33'-6"					
65	34'					
66	34'-6"					
67	35'	#5 Border		21'	100	
68	35'-6"	#5 Legs			100	40' Opening
69	36'	Black Scrim				
70	36'-6"					
71	37'					
72	37'-6"	#5 Elec		24'	580	
73	38'					
74	38'-6"	Cyc Elec		24'	460	
75	39'	HANGER	Steel support for Grid Iron			<b>NO LINESET AVAILABLE</b>
76	39'-6"					
77	40'					
78	40'-6"					
79	41'					
80	41'-6"					
81	42'					
82	42'-6"	#6 Border		21'	100	
83	43'	#6 Legs			100	40' Opening
84	43'-6"					
85	44'	Cyc			160	
86	44'-6"					
87	45'	FS BOD			360	
88	45'-6"					
89	46'					
90	46'-6"					
91	47'					
92	47'-6"					
93	48'					
94	48'-6"					
95	49'					
96	49'-6"					
97	50'					
98	50'-6"					
99	51'					
RW	55'		NO LINESET AVAILABLE			<b>NO LINESET AVAILABLE</b>

Batten Type: 1.5" id Sch 40 Truss Batten  
 Batten Length: 66'  
 Out Trim: 79'  
 In Trim: 4'  
 Arbor Capacity: 2,100#

Rev: 01/30/2020

All Linsets US of House Curtain can be stripped  
 Border Dim: 15'h x 66'w  
 Leg Dim: 30'h x 14'w  
 Proscenium Opening: 31'h x 50'w  
 40,000# of Counterweight



# Sound System Information Packet



### Fixed Speakers

Quantity	Make & Model	Location & Use
28	Meyer Mica	L/R Line Arrays (12x Per Side), L/R Delay Fill (2x Per Side)
2	Meyer CQ1	Center Cluster
4	Meyer CQ2	Center Cluster
2	Meyer 700HP	On Deck in front of Proscenium
2	Meyer 600HP	Top of Left & Right Line Array
14	Meyer M1D	Balcony Under-Fill
2	Meyer UPM-2P	Far Left & Right Upper Grand Tier Delays
4	Meyer UPA-1P	Center & Inner Left & Right Upper Grand Tier Delays
2	Meyer UPM-2P	Proscenium Down-Fill
8	Meyer MM4	Stage Lip Built-In Front-Fill

### Non-Fixed Speakers

Quantity	Make & Model	Location & Use
4	Meyer M1D	Front Fill & Side Fill
2	Meyer UPA-1P	Front Fill/Side Fill
12	Community XLT-48E	Non-BiAmped Stage Monitors
2	Meyer CQ2	Optional Use as Front or Side Fill

### FOH Equipment

Quantity	Make & Model	Use
1	Yamaha CL5 w/2x 3212 RiO	64 Channel Digital Console
1	Yamaha PM5D (non RH)	48 Channel Digital Console
1	Apple Mac Mini	Q-Lab

- **Main PA:**

- Meyer Mica Line Arrays with 12 cabinets per side
- 1 x 600 HP Subwoofer (Double 15") on top of each array
- 4 x M1D Front Fills
- 1 x UPA Per side on Stage as additional Front Fill
- 1 x 700 HP Subwoofer per side on Stage (Double 18")
- 2 x Galileo 616 units processed the entire PA and Delays
  - They may be accessed with Venue Laptop loaded with Meyer Compass Software over wired Cat6 connection
- Our typical FOH patch is Left, Right, Front Fill and Subwoofer
  - Delay, Backstage, Lobby, and ALS feeds are summed from Left/Right

<b>Microphones</b>		
<b>Quantity</b>	<b>Make &amp; Model</b>	<b>Use</b>
10	Shure B58	Dynamic Vocal & Instrument
4	Shure B98	Drum Kit
2	Shure SM81	Condenser Vocal & Instrument
1	EV RE20	Dynamic Instrument
10	Shure SM58	Dynamic Vocal & Instrument
5	Shure SM57	Dynamic Instrument
2	Shure B52	Dynamic Bass Instrument, Kick Drum
2	AKG 414	Condenser Vocal & Instrument
2	AKG 451	Condenser Instrument
2	Sennheiser 421	Dynamic Vocal & Instrument
8	Shure ULX-D w/Body Packs and SM58 HH	Wireless Vocal
4	DPA d:fine Headsets	Wireless Vocal
4	Sennheiser MKE-2 Lavalier	Wireless Vocal
6	Crown PCC160	Area Microphones

### Information and Policies:

- The theatre’s main sound system is comprised of two Meyer line-arrays and a full coverage Meyer center cluster.
- House PA is controlled by two Meyer Galileo Processors and Meyer Compass Software.
  - House Audio Engineer will retain sole control of processing at all times.
- The house has no decibel limitations but retains the right to ensure the protection of house equipment.
- Theatre has an unoccupied average reverb time of 1.5 seconds.
  - Acoustical curtains are located on rear wall, side walls, and proscenium wall of theatre. Curtains are fully adjustable and on average give a 1 second difference on reverb times.
- Supplemental sub-woofers for the deck are recommended for concerts. Local rental company information available upon request.



Patch Points		
Location	Audio Patch Lines (XLR)	Video Patch Lines (BNC)
Orchestra Pit	34	4
Center House Mix	6	4
Down Stage Left	22	4
Down Stage Right	22	4
Upstage Center	6	4
Forestage Grid	6	4
Spot Booth	6	4
Stage Manager Office	6	4
Cable & Snake Runs		
Location to Location	Distance	
Down Stage L&R to Orchestra Pit	60'	
Orchestra Pit to Mid House Mix	100'	
Mid House Mix to Sound Booth (Broadway mix)	100'	
Sound Booth to Lighting Booth	50'	
Loading Dock to Stage	80'	

- No cables or snakes are allowed to be run through audience areas. Eight-inch PVC conduits and wall pass-through holes are available for cable paths
- 250ft Snake is recommended for FOH splits.
- **A split snake and power distro are not available in house.**

Sound Isolated Power	
Amps	Location
200 amp (Cam-lock)	Down Stage Left Wall
200 amp (Cam-lock)	Up Stage Right Wall
20 amp (Edison)	At all mix positions and stage walls

### **Other Systems and Information**

- Production Intercom - House Intercom system is Clear-Com
  - Four channels are available in production locations and backstage areas.
  - Single and dual belt packs are available
  - House Clear-Com is Wired Only, No Wireless is available
- Backstage Program and Paging
  - Theatre program feed and road paging is patchable
  - Stage Manager paging plates are located stage left, stage right, and stage manager's office.
- Lobbies
  - Theatre program can be sent to lobbies



# Lighting System Information Packet

### Lighting Positions Available:

Mid Catwalk, Near Catwalk, Grand Tier Rail, Mezzanine Rail, 5 Box Rails SL and SR, Tech Gallery SL and SR, Proscenium Ladder SL and SR, and stage. These positions are equipped with 3pin stage pin and/or 6 circuit Socapex connectors.

<b>Fixture Inventory Available other than Rep Plot</b>		
Quantity	Make	Model
24	ETC Source 4	5-degree barrel
3	ETC Source 4	10-degree barrel
28	ETC Source 4	19-degree barrel
33	ETC Source 4	26-degree barrel
33	ETC Source 4	36-degree barrel
6	ETC Source 4	50-degree barrel
106	ETC Source 4	Source 4 Bodies with 750 watt lamp
28	Selecon Arena	8" Fresnel with 2.2k watt lamp
20	ETC Source 4	PAR with 750 watt lamp (VNSP, NSP, MFL, WFL)
10	L&E	MR16 6' strips with 75 watt lamp
12	HUI	3 Cell Groundrow Cyc Unit 1kW
4	Lycian	1293 X3K Long Throw Spot Lights

<b>Onstage Rep Plot consists of:</b>		
Quantity	Make	Model
25	ETC Source 4	26-degree with 750 watt lamp
30	ETC Source 4	36-degree with 750 watt lamp
100	ETC Source 4	PAR with 750 watt lamp
12	HUI	3 Cell Cyc Unit 1kW

<b>FOH Rep Plot consists of:</b>		
Quantity	Make	Model
2	ETC Source 4	5-degree with 750 watt lamp
58	ETC Source 4	10-degree with 750 watt lamp
71	ETC Source 4	19-degree with 750 watt lamp
69	ETC Source 4	26-degree with 750 watt lamp
2	Selecon Arena	8" Fresnel with 2.2k watt lamp

Light Control Inventory		
Quantity	Make	Model
1	ETC	ION Light Board w/40-fader wing
728	Strand	2.4k Dimmers
16	Strand	6k Dimmers
1	ETC	Fixed DMX 2-Port Gateway (on SL Jump)
3	ETC	Portable DMX 2-Port Gateways with Ethernet connector
1	Apple Ipod Touch	Wireless RFU
1	ETC	Paradigm system for House/Work Light Control

Company Switches / Disconnects		
Quantity	Location	Type
1	Grid	200-amp 3-phase 120/208-volt Bus Duct with a 60 amp and 100 amp disconnect
1	Forestage Grid	200-amp 3-phase 120/208-volt
4	Mid Gallery, Stage-Left	400-amp 3-phase 120/208-volt
1	Stage, Down-left	200-amp 3-phase 120/208-volt, isolated audio ground
1	Stage, Up-left	400-amp 3-phase 120/208-volt
1	Stage, Up-left	200-amp 3-phase 120/208-volt
1	Stage, Up-right	200-amp 3-phase 120/208-volt, isolated audio ground
2	Loading Dock	200-amp 3-phase 120/208-volt
1	Trap Room	200-amp 3-phase 120/208-volt

Cable		
Quantity	Type	Length
24	20A Stage Pin	5'
46	20A Stage Pin	10'
22	20A Stage Pin	25'
25	20A Stage Pin	50'
12	20A Stage Pin	100'
29	20A Stage Pin 2-fer	2'
25	6-Circuit Socapex	100'
20	Socapex to Stage Pin Breakout	1' to 6' staggered
2	Socapex to Edison Breakout	6'
8	60A Stage Pin	25'
3	60A Stage Pin	50'

<b>Cable Turnarounds</b>		
<b>Quantity</b>	<b>Type</b>	<b>Orientation</b>
2	5-Pin DMX	Female - Female
17	5-Pin DMX	Male - Male
3	DMX	3-Pin Female to 5-Pin Male
4	DMX	5-Pin Female to 3-Pin Male
6	DMX	3-Pin Female to 5-Pin Female
18	Power	Edison M to Stage Pin F
25	Power	Edison F to Stage Pin M

# Channel Magic Sheet


## Onstage

RED (R26)			
DSL			DSR
<b>1E</b>	31 <i>(361)</i>	32 <i>(368)</i>	33 <i>(373)</i>
<b>2E</b>	34 <i>(385)</i>	35 <i>(392)</i>	36 <i>(402)</i>
<b>3E</b>	37 <i>(409)</i>	38 <i>(416)</i>	39 <i>(421)</i>
<b>4E</b>	40 <i>(433)</i>	41 <i>(440)</i>	42 <i>(445)</i>
<b>5E</b>	43 <i>(457)</i>	44 <i>(464)</i>	45 <i>(469)</i>

BLUE (R80)			
DSL			DSR
<b>1E</b>	51 <i>(362)</i>	52 <i>(367)</i>	53 <i>(374)</i>
<b>2E</b>	54 <i>(384)</i>	55 <i>(391)</i>	56 <i>(396)</i>
<b>3E</b>	57 <i>(408)</i>	58 <i>(415)</i>	59 <i>(420)</i>
<b>4E</b>	60 <i>(432)</i>	61 <i>(439)</i>	62 <i>(444)</i>
<b>5E</b>	63 <i>(456)</i>	64 <i>(463)</i>	65 <i>(468)</i>

Warm Hi-Sides (R318)		
SL		SR
<b>1E</b>	111 <i>(355)</i>	112 <i>(377)</i>
<b>2E</b>	113 <i>(379)</i>	114 <i>(401)</i>
<b>3E</b>	115 <i>(403)</i>	116 <i>(425)</i>
<b>4E</b>	117 <i>(427)</i>	118 <i>(449)</i>
<b>5E</b>	119 <i>(451)</i>	120 <i>(473)</i>

Cool Hi-Sides (L201)		
SL		SR
<b>1E</b>	121 <i>(357)</i>	122 <i>(375)</i>
<b>2E</b>	123 <i>(381)</i>	124 <i>(399)</i>
<b>3E</b>	125 <i>(405)</i>	126 <i>(423)</i>
<b>4E</b>	127 <i>(429)</i>	128 <i>(447)</i>
<b>5E</b>	129 <i>(453)</i>	130 <i>(471)</i>

GOBO Hi-Sides (Rosco 77785)		
SL		SR
<b>1E</b>	131 <i>(356)</i>	132 <i>(376)</i>
<b>2E</b>	133 <i>(380)</i>	134 <i>(400)</i>
<b>3E</b>	135 <i>(404)</i>	136 <i>(424)</i>
<b>4E</b>	137 <i>(428)</i>	138 <i>(448)</i>
<b>5E</b>	139 <i>(452)</i>	140 <i>(472)</i>

AMBER (R21)			
DSL			DSR
<b>1E</b>	71 <i>(359)</i>	72 <i>(365)</i>	73 <i>(371)</i>
<b>2E</b>	74 <i>(383)</i>	75 <i>(389)</i>	76 <i>(395)</i>
<b>3E</b>	77 <i>(407)</i>	78 <i>(413)</i>	79 <i>(419)</i>
<b>4E</b>	80 <i>(431)</i>	81 <i>(437)</i>	82 <i>(443)</i>
<b>5E</b>	83 <i>(455)</i>	84 <i>(461)</i>	85 <i>(467)</i>

LIGHT BLUE (R65)			
DSL			DSR
<b>1E</b>	91 <i>(358)</i>	92 <i>(364)</i>	93 <i>(370)</i>
<b>2E</b>	94 <i>(382)</i>	95 <i>(388)</i>	96 <i>(394)</i>
<b>3E</b>	97 <i>(406)</i>	98 <i>(412)</i>	99 <i>(418)</i>
<b>4E</b>	100 <i>(430)</i>	101 <i>(436)</i>	102 <i>(442)</i>
<b>5E</b>	103 <i>(454)</i>	104 <i>(460)</i>	105 <i>(466)</i>

Overhead Specials					
SL					SR
<b>1E</b>	171 <i>(360)</i>	172 <i>(363)</i>	173 <i>(366)</i>	174 <i>(369)</i>	175 <i>(372)</i>
<b>2E</b>	176 <i>(386)</i>	177 <i>(387)</i>	178 <i>(390)</i>	179 <i>(393)</i>	180 <i>(398)</i>
<b>3E</b>	181 <i>(410)</i>	182 <i>(411)</i>	183 <i>(414)</i>	184 <i>(417)</i>	185 <i>(422)</i>
<b>4E</b>	186 <i>(434)</i>	187 <i>(435)</i>	188 <i>(438)</i>	189 <i>(441)</i>	190 <i>(446)</i>
<b>5E</b>	191 <i>(458)</i>	192 <i>(459)</i>	193 <i>(462)</i>	194 <i>(465)</i>	195 <i>(470)</i>

CYC						
	SL				SR	
<b>Red</b>	141 <i>(475)</i>	142 <i>(478)</i>	143 <i>(481)</i>	144 <i>(484)</i>	145 <i>(487)</i>	146 <i>(490)</i>
<b>Green</b>	151 <i>(476)</i>	152 <i>(479)</i>	153 <i>(482)</i>	154 <i>(485)</i>	155 <i>(488)</i>	156 <i>(491)</i>
<b>Blue</b>	161 <i>(477)</i>	162 <i>(480)</i>	163 <i>(483)</i>	164 <i>(486)</i>	165 <i>(489)</i>	166 <i>(492)</i>

# Channel Magic Sheet

## Front of House

<u>Terms</u>								<u>Box 1 High</u>		<u>Box 2 High</u>		<u>Box 3 High</u>		<u>Box 1 Low</u>		<u>Box 2 Low</u>			
								HL	HR	HL	HR	HL	HR	HL	HR	HL	HR		
<b>Hi</b>	201	202	203	204	<b>Hi</b>	221	222	223	224	351	341	371	361	391	381	311	301	331	321
	(115)	(116)	(117)	(118)		(133)	(134)	(135)	(136)	(216)	(234)	(222)	(240)	(283)	(301)	(156)	(174)	(162)	(180)
<b>Mid</b>	205	206	207	208	<b>Mid</b>	225	226	227	228	352	342	372	362	392	382	312	302	332	322
	(119)	(120)	(149)	(150)		(137)	(138)	(139)	(140)	(215)	(233)	(221)	(239)	(284)	(302)	(155)	(173)	(161)	(179)
<b>Low</b>	209	210	211	212	<b>Low</b>	229	230	231	232	353	343	373	363	393	383	313	303	333	323
	(145)	(146)	(147)	(148)		(141)	(142)	(143)	(144)	(214)	(232)	(220)	(238)	(285)	(303)	(154)	(172)	(160)	(178)
										354	344	374	364	394	384	314	304	334	324
										(213)	(231)	(219)	(237)	(286)	(304)	(153)	(171)	(159)	(177)

<u>Grand Tier Front Wash</u>					
HL					HR
<b>Cool:</b>	451	452	453	454	455 456
	(255)	(247)	(250)	(260)	(263) (267)
<b>N/C:</b>	461	462	463	464	465 466
	(256)	(248)	(251)	(259)	(262) (266)
<b>Warm:</b>	471	472	473	474	475
	(258)	(249)	(252)	(261)	(264)
<u>Grand Tier Specials</u>					
HL					HR
10°:	431	432	433	434	435 436
	(268)	(242)	(241)	(227)	(228) (254)
5°:	441			442	
	(257)			(265)	

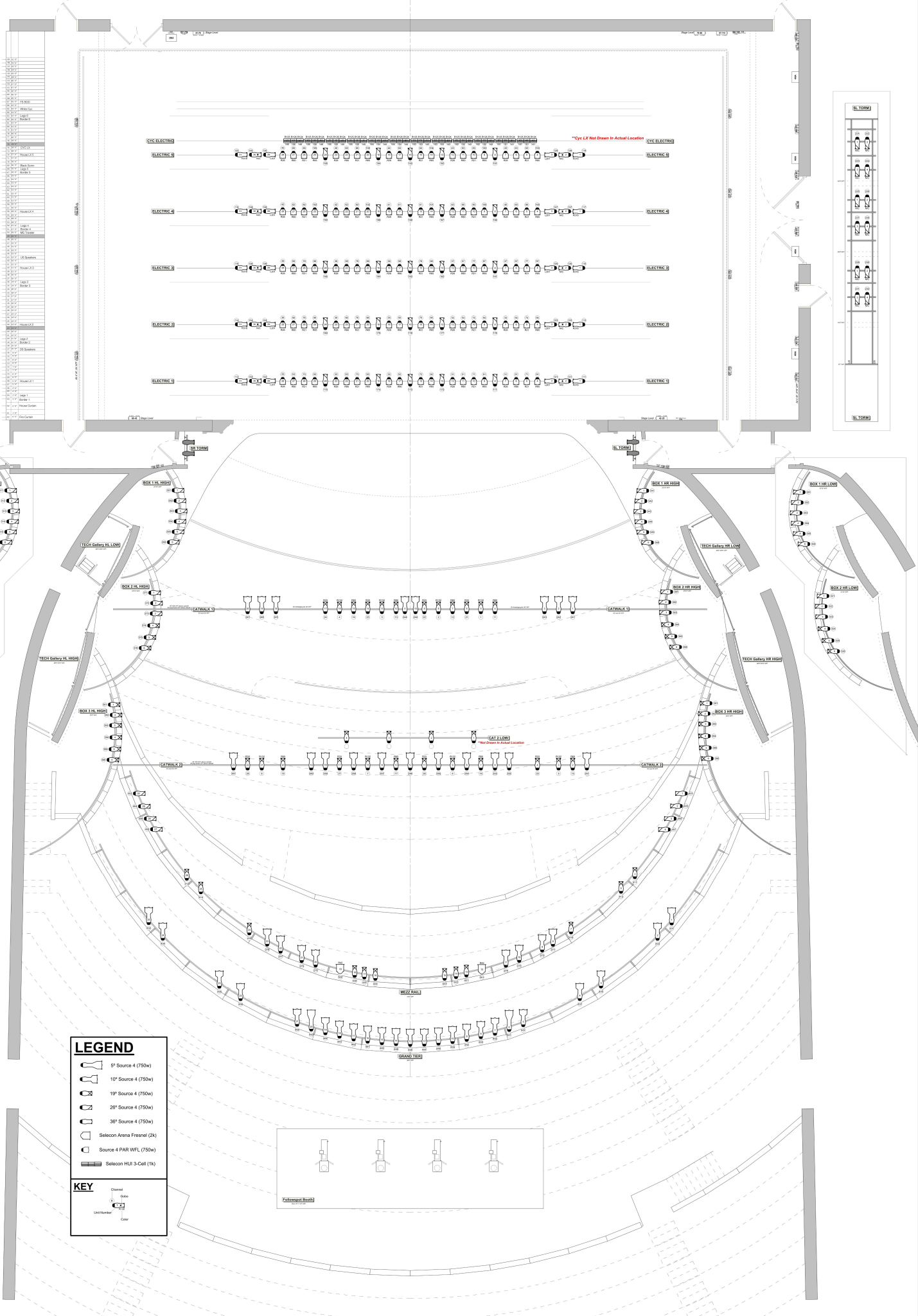
<u>Curtain Warmers</u>	
HL	HR
502	501
(193)	(204)

355	345	375	365	395	385	315	305	335	325
(212)	(230)	(218)	(236)	(287)	(305)	(152)	(170)	(158)	(176)
356	346	376	366	396	386	316	306	336	326
(211)	(229)	(217)	(235)	(288)	(306)	(151)	(169)	(157)	(175)

<u>Catwalk #2</u>													
HL													HR
	<b>Blue (R60)</b>				<b>No Color (N/C)</b>				<b>Pink (R33)</b>				
	15	16	17	18	5	6	7	8	25	26	27	28	
	(690)	(700)	(708)	(721)	(682)	(698)	(704)	(720)	(681)	(694)	(702)	(719)	
	(178)	(188)	(196)	(209)	(170)	(186)	(192)	(208)	(169)	(182)	(190)	(207)	
<u>Catwalk Specials (10°)</u>													
	251	252	253	254	255	256	257	258	259	260	261		
	(680)	(692)	(693)	(697)	(699)	(701)	(703)	(707)	(709)	(710)	(722)		
	(168)	(180)	(181)	(185)	(187)	(189)	(191)	(195)	(197)	(198)	(210)		
<b>Only Catwalks are in Univ. 2.</b>													
(Top Dimmer) ETC Network													
(Bottom Dimmer) Univ. 2/													

<u>Lower Mezzanine</u>								
HL							HR	
10°:	271	272	273	274		275	276 277 278	
	(189)	(190)	(191)	(192)		(205)	(206) (207) (208)	
19°:	411	412	413		421	422 423 424 425 426		414 415 416
	(164)	(163)	(188)		(194)	(195) (196) (201) (202) (203)		(209) (181) (182)
26°:	401	402	403	404		405	406 407 408	
	(168)	(167)	(166)	(165)		(183)	(184) (185) (186)	

<u>Catwalk #1</u>						
HL						HR
Specials:	241	242	243	244	245	246 247
	(628)	(629)	(630)	(649)	(677)	(668) (699)
	(116)	(117)	(118)	(137)	(165)	(156) (157)



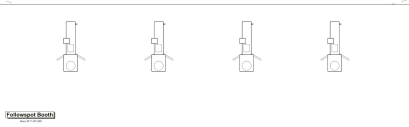
- 110001
- 110002
- 110003
- 110004
- 110005
- 110006
- 110007
- 110008
- 110009
- 110010
- 110011
- 110012
- 110013
- 110014
- 110015
- 110016
- 110017
- 110018
- 110019
- 110020
- 110021
- 110022
- 110023
- 110024
- 110025
- 110026
- 110027
- 110028
- 110029
- 110030
- 110031
- 110032
- 110033
- 110034
- 110035
- 110036
- 110037
- 110038
- 110039
- 110040
- 110041
- 110042
- 110043
- 110044
- 110045
- 110046
- 110047
- 110048
- 110049
- 110050
- 110051
- 110052
- 110053
- 110054
- 110055
- 110056
- 110057
- 110058
- 110059
- 110060
- 110061
- 110062
- 110063
- 110064
- 110065
- 110066
- 110067
- 110068
- 110069
- 110070
- 110071
- 110072
- 110073
- 110074
- 110075
- 110076
- 110077
- 110078
- 110079
- 110080
- 110081
- 110082
- 110083
- 110084
- 110085
- 110086
- 110087
- 110088
- 110089
- 110090
- 110091
- 110092
- 110093
- 110094
- 110095
- 110096
- 110097
- 110098
- 110099
- 110100

**LEGEND**

- 5' Source 4 (750w)
- 10' Source 4 (750w)
- 19' Source 4 (750w)
- 28' Source 4 (750w)
- 38' Source 4 (750w)
- Selecon Arena Fresnel (2k)
- Source 4 PAR WFL (750w)
- Selecon HUI 3-Cell (1k)

**KEY**

- Channel
- Ends
- Unit Number
- Color



\*\*Eye Lx Not Drawn in Actual Location

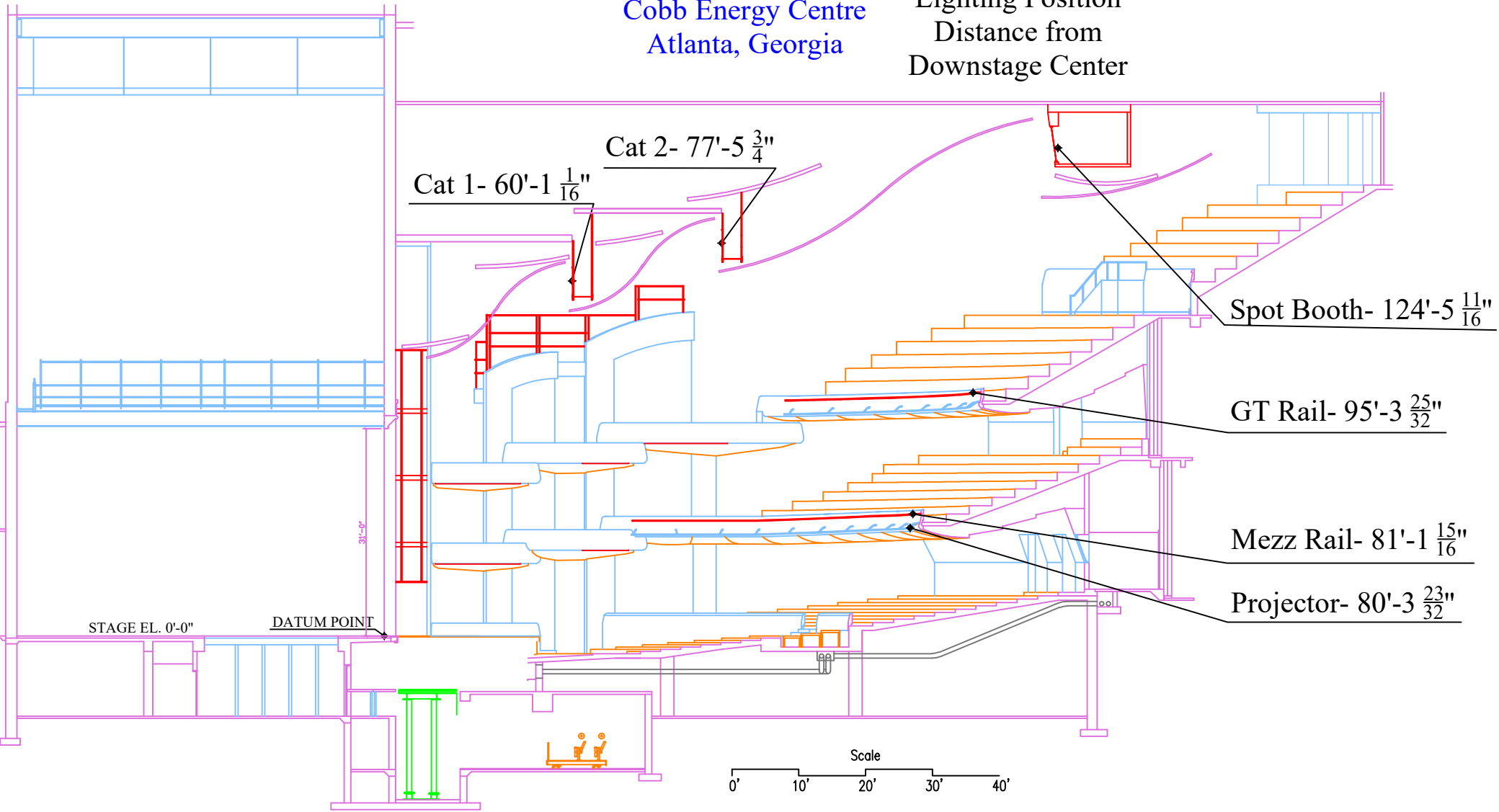
\*\*Eye Lx Not Drawn in Actual Location

Closest South



Cobb Energy Centre  
Atlanta, Georgia

Lighting Position  
Distance from  
Downstage Center



Cat 1- 60'-1  $\frac{1}{16}$ "

Cat 2- 77'-5  $\frac{3}{4}$ "

Spot Booth- 124'-5  $\frac{11}{16}$ "

GT Rail- 95'-3  $\frac{25}{32}$ "

Mezz Rail- 81'-1  $\frac{15}{16}$ "

Projector- 80'-3  $\frac{23}{32}$ "

STAGE EL. 0'-0"

DATUM POINT

Scale  
0' 10' 20' 30' 40'

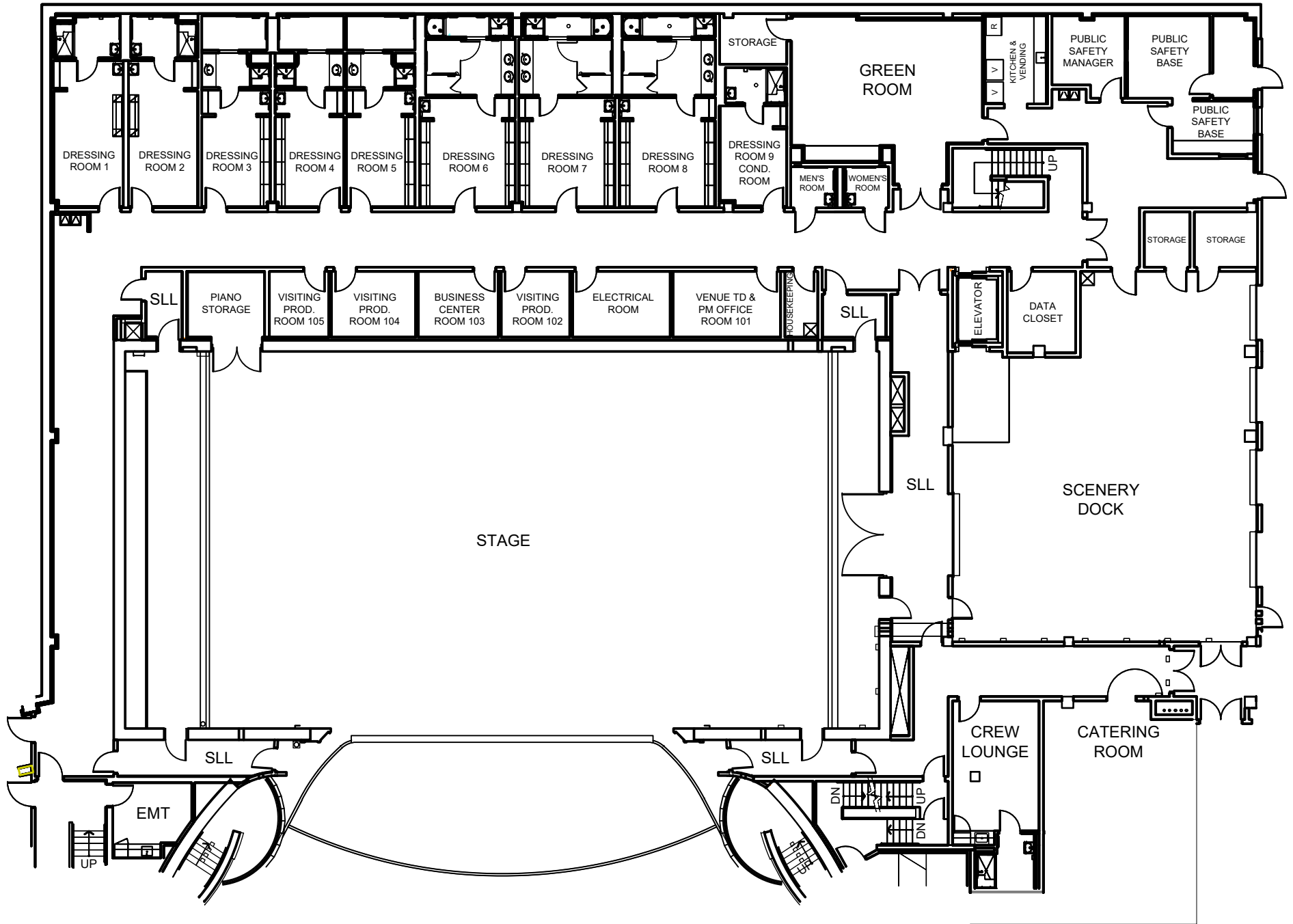


# COBB ENERGY

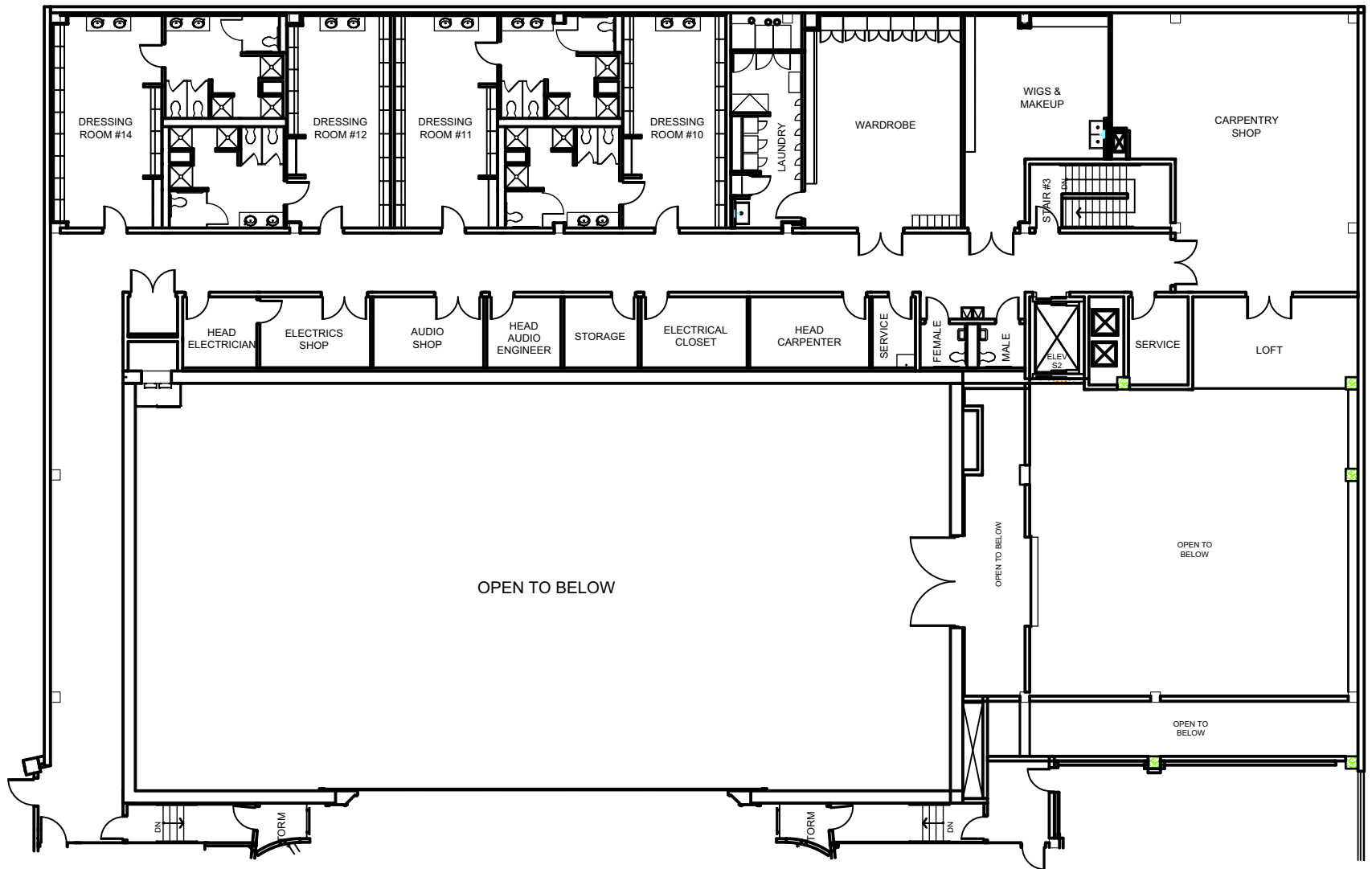
---

PERFORMING ARTS CENTRE

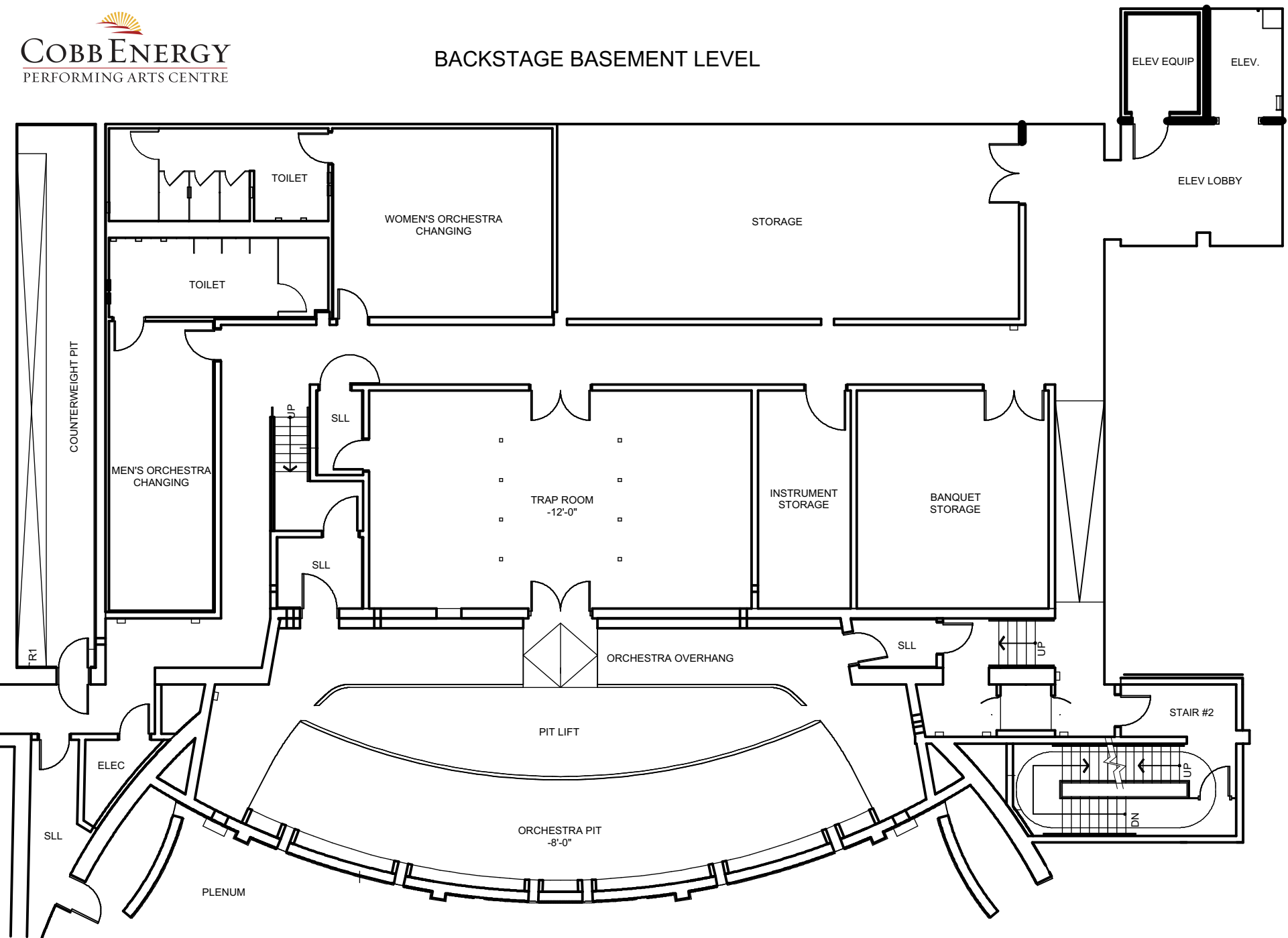
## **General Backstage Drawings**



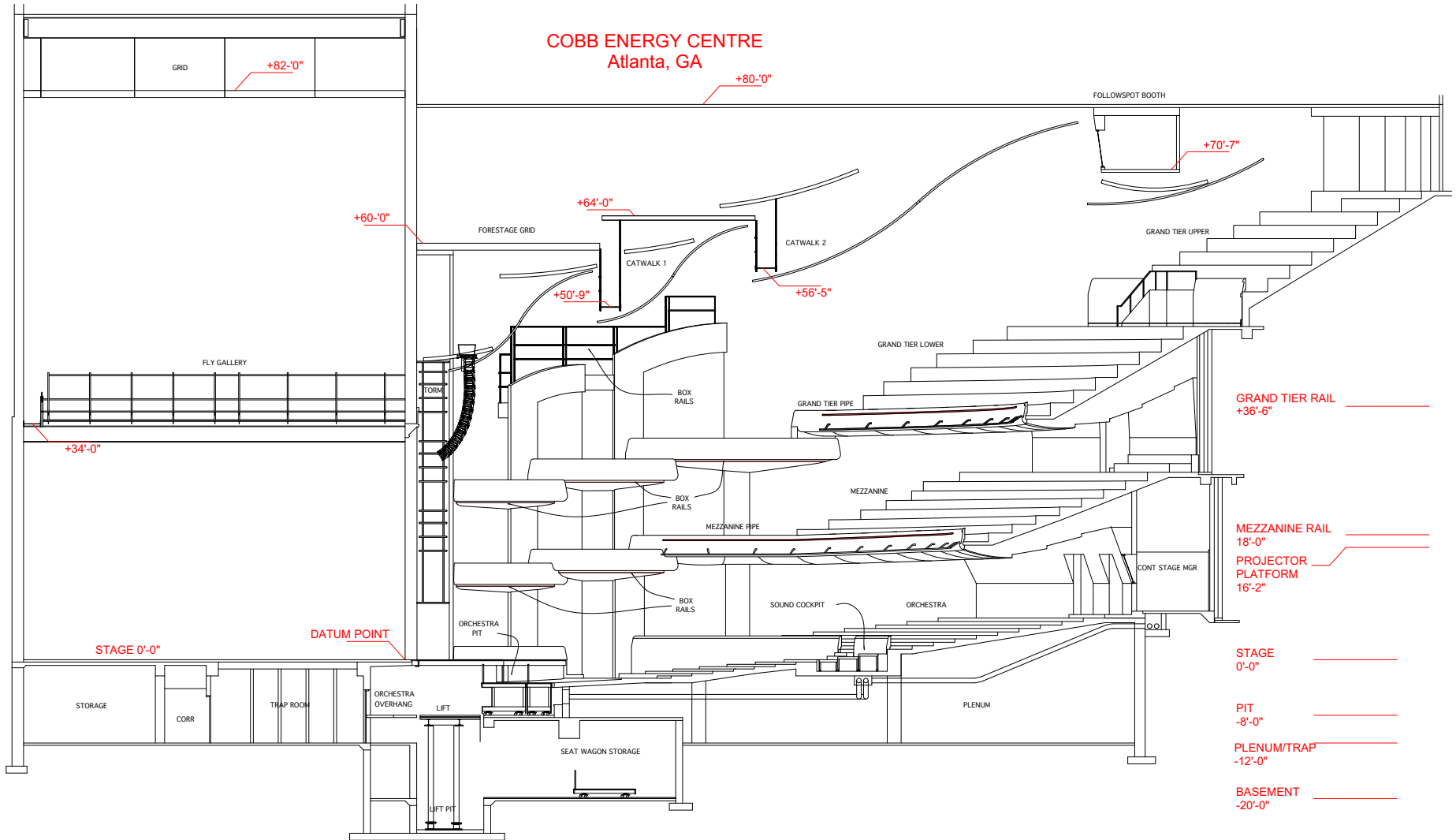
1st Floor Dressing Rooms



# BACKSTAGE BASEMENT LEVEL



**COBB ENERGY CENTRE**  
Atlanta, GA



- GRAND TIER RAIL +36'-6"
- MEZZANINE RAIL 18'-0"
- PROJECTOR PLATFORM 16'-2"
- STAGE 0'-0"
- PIT -8'-0"
- PLENUM/TRAP -12'-0"
- BASEMENT -20'-0"

GRID

+82'-0"

+80'-0"

FOLLOWSPOT BOOTH

+70'-7"

+60'-0"

FORESTAGE GRID

+64'-0"

CATWALK 1

CATWALK 2

GRAND TIER UPPER

+50'-9"

+56'-5"

FLY GALLERY

TORM

BOX RAILS

GRAND TIER LOWER

GRAND TIER PIPE

GRAND TIER RAIL +36'-6"

+34'-0"

BOX RAILS

MEZZANINE

MEZZANINE PIPE

MEZZANINE RAIL 18'-0"

CONT STAGE MGR

STAGE 0'-0"

DATUM POINT

ORCHESTRA PIT

SOUND COCKPIT

ORCHESTRA

STAGE 0'-0"

STORAGE

CORR

TRAP ROOM

ORCHESTRA OVERHANG

LIFT

PLENUM

PIT -8'-0"

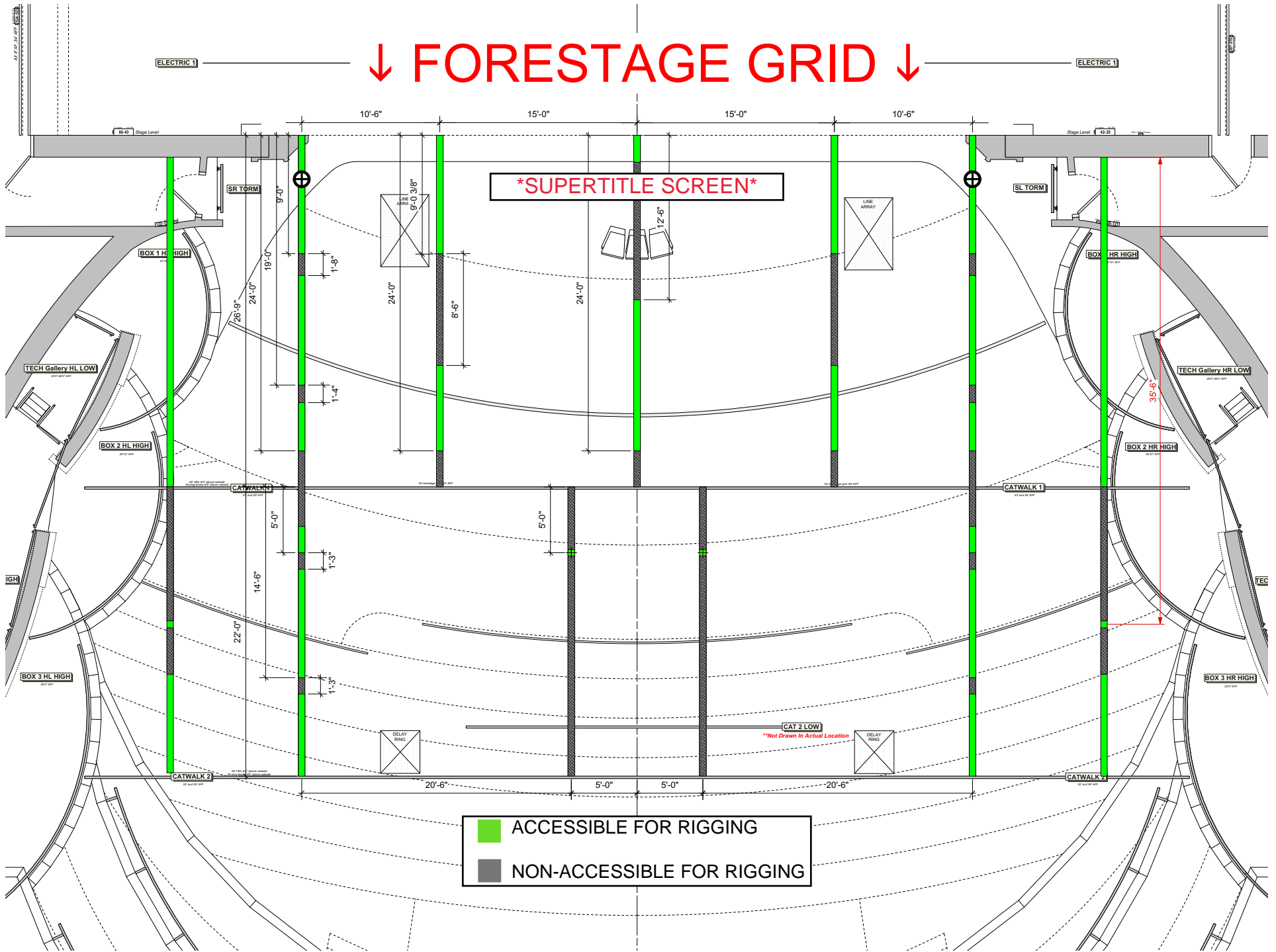
SEAT WAGON STORAGE

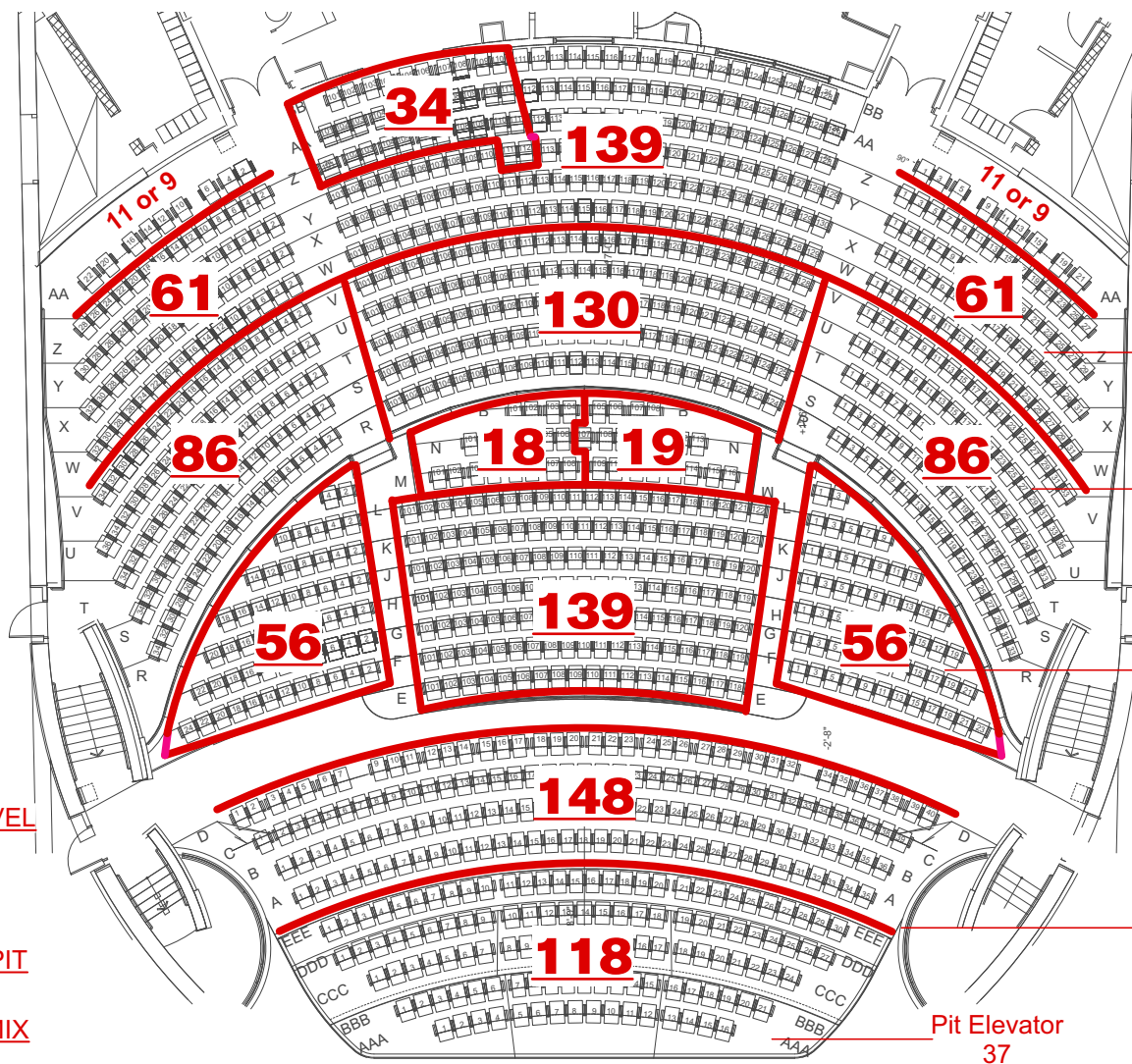
PLENUM/TRAP -12'-0"

LIFT PIT

BASEMENT -20'-0"

# ↓ FORESTAGE GRID ↓





TOTAL: 295  
 TOTAL: 302  
 TOTAL w/ Half Mix: 270  
 TOTAL w/ Full Mix: 251  
 TOTAL w/ NO Mix: 288

TOTAL ORCHESTRA LEVEL  
 1173  
TOTAL with FULL PIT  
 1054  
TOTAL with BROADWAY PIT  
 1135  
TOTAL with BROADWAY MIX  
 1138  
TOTAL with Full Mix  
 1135  
TOTAL with Half Mix  
 1154  
 TOTAL BOX SEATS: 56

TOTAL  
 266

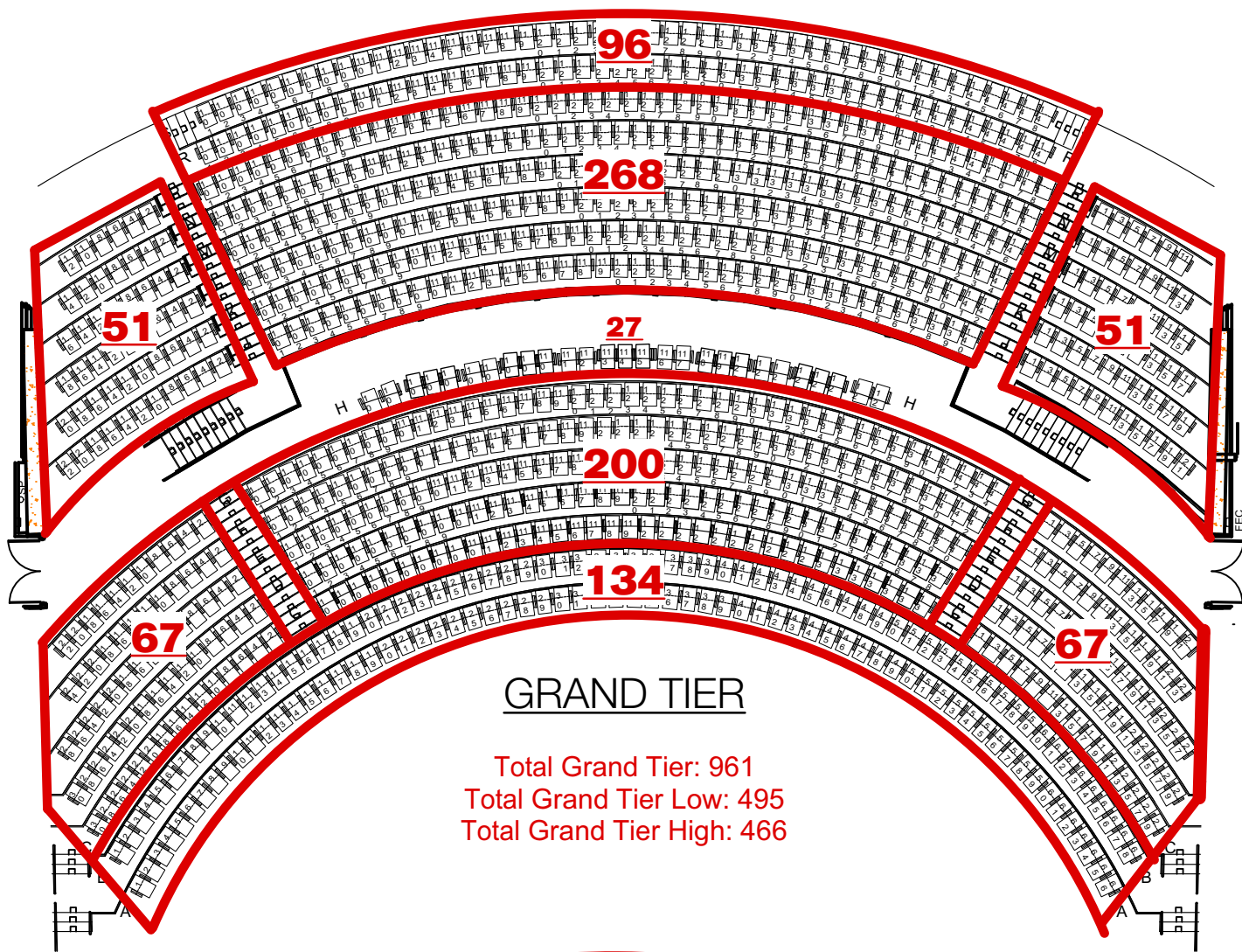
Pit Elevator  
 37

**COBB ENERGY CENTRE**  
**ORCHESTRA LEVEL**  
 SCALING MAP



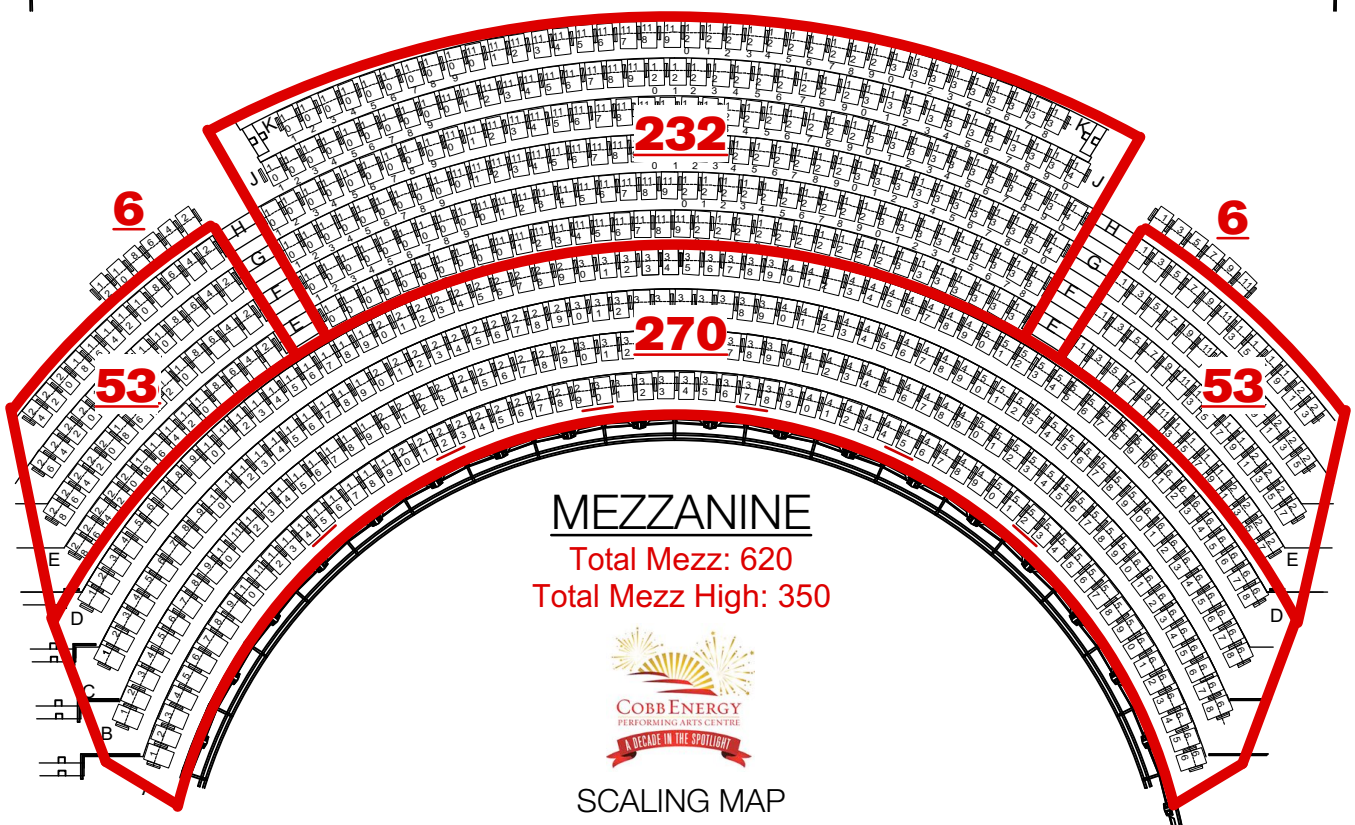
**TOTAL SEATING CAPACITY: 2756**





**GRAND TIER**

Total Grand Tier: 961  
 Total Grand Tier Low: 495  
 Total Grand Tier High: 466



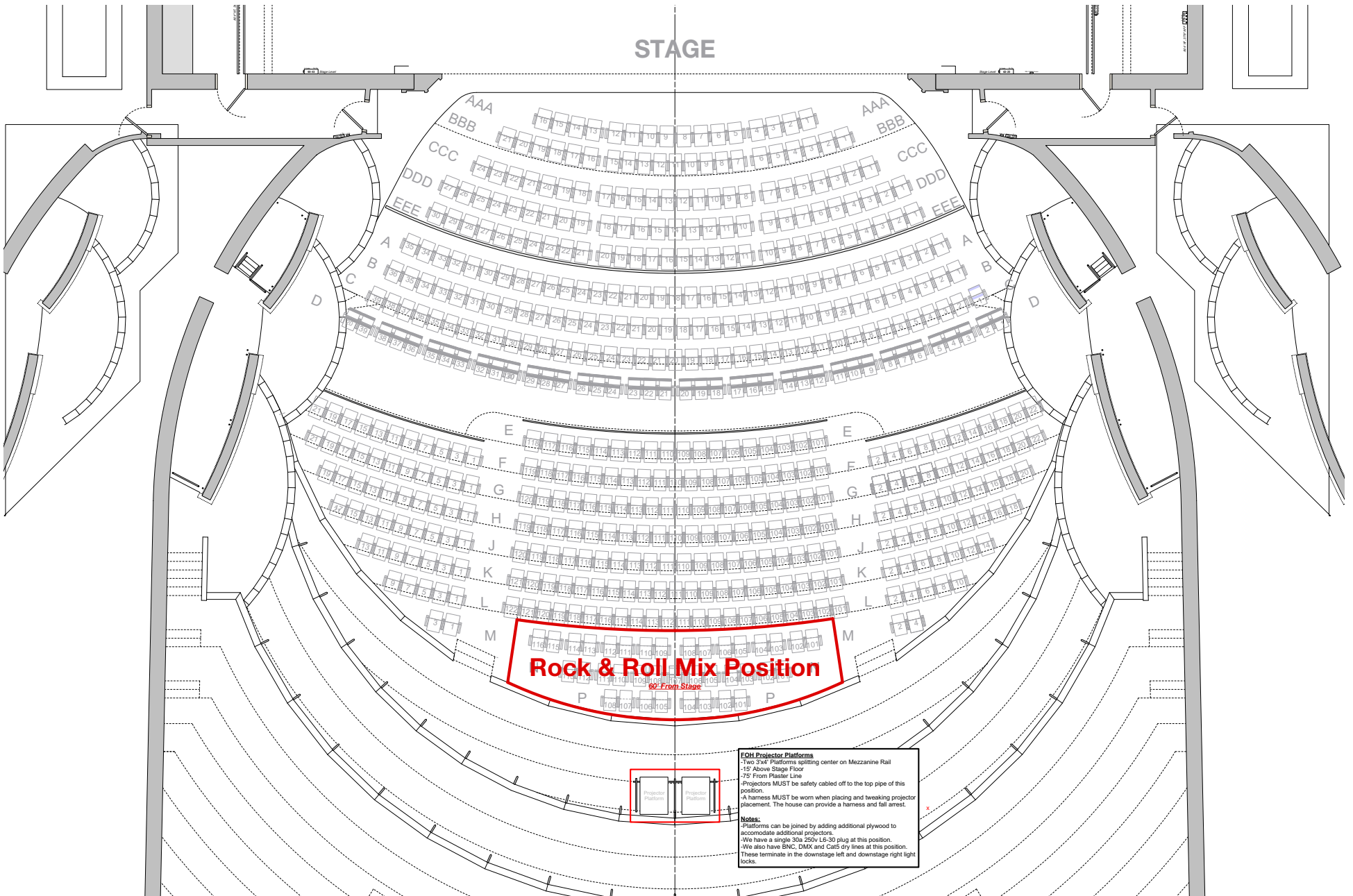
**MEZZANINE**

Total Mezz: 620  
 Total Mezz High: 350

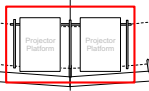


SCALING MAP

# STAGE



**Rock & Roll Mix Position**  
60' From Stage



**EQH Projector Platforms**  
 -Two 5'x4' Platforms splitting center on Mezzanine Rail  
 -15' Above Stage Floor  
 -75' From Plaster Line  
 -Projectors **MUST** be safely cabled off to the top pipe of this position.  
 -A harness **MUST** be worn when placing and tweaking projector placement. The house can provide a harness and fall arrest.

**Notes:**  
 -Platforms can be joined by adding additional plywood to accommodate additional projectors.  
 -We have a single 30a 250v L6-30 plug at this position.  
 -We also have ENC, DMX and Cats dry lines at this position. These terminate in the downstage left and downstage right light locks.